

Epha10 Antibody

Purified Mouse Monoclonal Antibody

Catalog # AO1558a

Product Information

Application	WB, E
Primary Accession	Q5JZY3
Reactivity	Human
Host	Mouse
Clonality	Monoclonal
Clone Names	2E8
Isotype	IgG2a
Calculated MW	109716
Description	Ephrin receptors, the largest subfamily of receptor tyrosine kinases (RTKs), and their ephrin ligands are important mediators of cell-cell communication regulating cell attachment, shape, and mobility in neuronal and epithelial cells (Aasheim et al., 2005 (PubMed 15777695)). Tissue specificity: Mainly expressed in testis.
Immunogen	Purified recombinant fragment of human Epha10 expressed in E. Coli.
Formulation	Ascitic fluid containing 0.03% sodium azide.

Additional Information

Gene ID	284656
Other Names	Ephrin type-A receptor 10, 2.7.10.1, EPHA10
Dilution	WB~~1/500 - 1/2000 E~~1/10000
Storage	Maintain refrigerated at 2-8°C for up to 6 months. For long term storage store at -20°C in small aliquots to prevent freeze-thaw cycles.
Precautions	Epha10 Antibody is for research use only and not for use in diagnostic or therapeutic procedures.

Protein Information

Name	EPHA10
Function	Receptor for members of the ephrin-A family. Binds to EFNA3, EFNA4 and EFNA5.

Cellular Location [Isoform 1]: Cell membrane; Single- pass type I membrane protein [Isoform 2]: Secreted.

Tissue Location Mainly expressed in testis.

References

1. Biochem Cell Biol. 2011 Apr;89(2):115-29. 2. Leuk Res. 2009 Mar;33(3):395-406.

Images

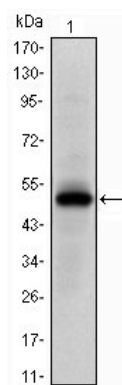


Figure 1: Western blot analysis using Epha10 mAb against human Epha10 (AA: 34-295) recombinant protein. (Expected MW is 50 kDa)

Please note: All products are 'FOR RESEARCH USE ONLY. NOT FOR USE IN DIAGNOSTIC OR THERAPEUTIC PROCEDURES'.