

# CRKL Antibody

Purified Mouse Monoclonal Antibody

Catalog # AO1581a

## Product Information

---

<b>Application</b>	WB, FC, E
<b>Primary Accession</b>	<a href="#">P46109</a>
<b>Reactivity</b>	Human
<b>Host</b>	Mouse
<b>Clonality</b>	Monoclonal
<b>Clone Names</b>	5E12
<b>Isotype</b>	IgG1
<b>Calculated MW</b>	33777
<b>Description</b>	This gene encodes a protein kinase containing SH2 and SH3 (src homology) domains which has been shown to activate the RAS and JUN kinase signaling pathways and transform fibroblasts in a RAS-dependent fashion. It is a substrate of the BCR-ABL tyrosine kinase, plays a role in fibroblast transformation by BCR-ABL, and may be oncogenic.
<b>Immunogen</b>	Purified recombinant fragment of human CRKL expressed in E. Coli.
<b>Formulation</b>	Ascitic fluid containing 0.03% sodium azide.

## Additional Information

---

<b>Gene ID</b>	1399
<b>Other Names</b>	Crk-like protein, CRKL
<b>Dilution</b>	WB~~1/500 - 1/2000 FC~~1/200 - 1/400 E~~1/10000
<b>Storage</b>	Maintain refrigerated at 2-8°C for up to 6 months. For long term storage store at -20°C in small aliquots to prevent freeze-thaw cycles.
<b>Precautions</b>	CRKL Antibody is for research use only and not for use in diagnostic or therapeutic procedures.

## Protein Information

---

<b>Name</b>	CRKL
<b>Function</b>	May mediate the transduction of intracellular signals.

## References

---

1. Mol Cell Biol. 2009 Jun;29(11):3076-87. 2. Cell. 2009 Jul 23;138(2):389-403.

## Images

---

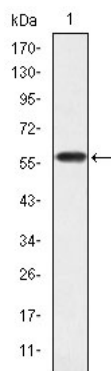


Figure 1: Western blot analysis using CRKL mAb against human CRKL (AA: 100-303) recombinant protein. (Expected MW is 60 kDa)

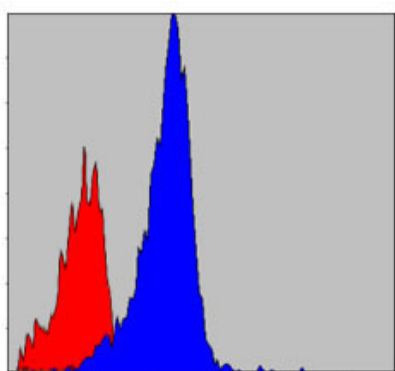


Figure 2: Flow cytometric analysis of NIH/3T3 cells using CRKL mouse mAb (blue) and negative control (red).

Please note: All products are 'FOR RESEARCH USE ONLY. NOT FOR USE IN DIAGNOSTIC OR THERAPEUTIC PROCEDURES'.