

FGG Antibody

Purified Mouse Monoclonal Antibody

Catalog # AO1621a

Product Information

Application	WB, IHC, FC, ICC, E
Primary Accession	P02679
Reactivity	Human
Host	Mouse
Clonality	Monoclonal
Clone Names	4H9
Isotype	IgG2a
Calculated MW	51512
Description	The protein encoded by this gene is the gamma component of fibrinogen, a blood-borne glycoprotein comprised of three pairs of nonidentical polypeptide chains. Following vascular injury, fibrinogen is cleaved by thrombin to form fibrin which is the most abundant component of blood clots. In addition, various cleavage products of fibrinogen and fibrin regulate cell adhesion and spreading, display vasoconstrictor and chemotactic activities, and are mitogens for several cell types. Mutations in this gene lead to several disorders, including dysfibrinogenemia, hypofibrinogenemia and thrombophilia. Alternative splicing results in two transcript variants encoding different isoforms.
Immunogen	Purified recombinant fragment of human FGG expressed in E. Coli.
Formulation	Ascitic fluid containing 0.03% sodium azide.

Additional Information

Gene ID	2266
Other Names	Fibrinogen gamma chain, FGG
Dilution	WB~~1/500 - 1/2000 IHC~~1/200 - 1/1000 FC~~1/200 - 1/400 ICC~~N/A E~~1/10000
Storage	Maintain refrigerated at 2-8°C for up to 6 months. For long term storage store at -20°C in small aliquots to prevent freeze-thaw cycles.
Precautions	FGG Antibody is for research use only and not for use in diagnostic or therapeutic procedures.

Protein Information

Name	FGG
Function	Together with fibrinogen alpha (FGA) and fibrinogen beta (FGB), polymerizes to form an insoluble fibrin matrix. Has a major function in hemostasis as one of the primary components of blood clots. In addition, functions during the early stages of wound repair to stabilize the lesion and guide cell migration during re- epithelialization. Was originally thought to be essential for platelet aggregation, based on in vitro studies using anticoagulated blood. However, subsequent studies have shown that it is not absolutely required for thrombus formation in vivo. Enhances expression of SELP in activated platelets via an ITGB3-dependent pathway. Maternal fibrinogen is essential for successful pregnancy. Fibrin deposition is also associated with infection, where it protects against IFNG-mediated hemorrhage. May also facilitate the antibacterial immune response via both innate and T-cell mediated pathways.
Cellular Location	Secreted
Tissue Location	Detected in blood plasma (at protein level).

References

1. Biochemistry. 2009 Sep 15;48(36):8656-63. 2. Blood. 2009 Nov 5;114(19):3994-4001.

Images

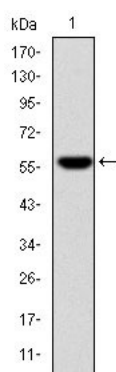


Figure 1: Western blot analysis using FGG mAb against human FGG (AA: 210-437) recombinant protein. (Expected MW is 51.5 kDa)

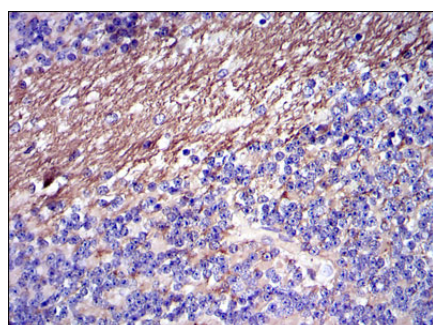


Figure 2: Immunohistochemical analysis of paraffin-embedded cerebellum tissues using FGG mouse mAb with DAB staining.

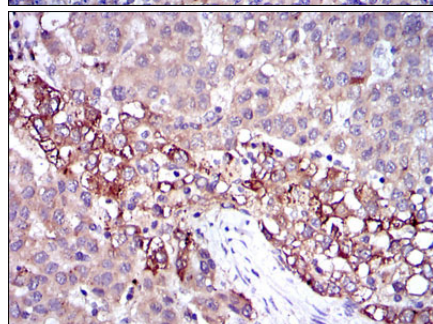


Figure 3: Immunohistochemical analysis of paraffin-embedded liver cancer tissues using FGG mouse mAb with DAB staining.

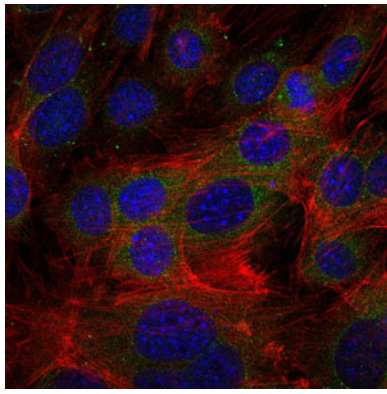


Figure 4: Immunofluorescence analysis of 3T3-L1 cells using FGG mouse mAb (green). Blue: DRAQ5 fluorescent DNA dye. Red: Actin filaments have been labeled with Alexa Fluor-555 phalloidin.

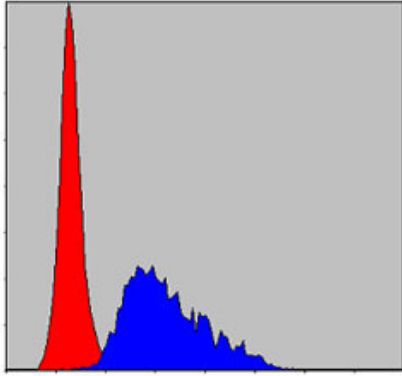


Figure 5: Flow cytometric analysis of HepG2 cells using FGG mouse mAb (blue) and negative control (red).

Please note: All products are 'FOR RESEARCH USE ONLY. NOT FOR USE IN DIAGNOSTIC OR THERAPEUTIC PROCEDURES'.