

TUBA8 Antibody

Purified Mouse Monoclonal Antibody

Catalog # AO1651a

Product Information

Application	WB, IHC, FC, ICC, E
Primary Accession	Q9NY65
Reactivity	Human, Rat
Host	Mouse
Clonality	Monoclonal
Clone Names	2D6
Isotype	IgG2b
Calculated MW	50094
Description	This gene encodes a member of the alpha tubulin protein family. Alpha tubulins are one of two core protein families (alpha and beta tubulins) that heterodimerize and assemble to form microtubules. Mutations in this gene are associated with polymicrogyria and optic nerve hypoplasia. Alternate splicing results in multiple transcript variants.
Immunogen	Purified recombinant fragment of human TUBA8 expressed in E. Coli.
Formulation	Ascitic fluid containing 0.03% sodium azide.

Additional Information

Gene ID	51807
Other Names	Tubulin alpha-8 chain, Alpha-tubulin 8, Tubulin alpha chain-like 2, TUBA8, TUBAL2
Dilution	WB~~1/500 - 1/2000 IHC~~1/200 - 1/1000 FC~~1/200 - 1/400 ICC~~N/A E~~1/10000
Storage	Maintain refrigerated at 2-8°C for up to 6 months. For long term storage store at -20°C in small aliquots to prevent freeze-thaw cycles.
Precautions	TUBA8 Antibody is for research use only and not for use in diagnostic or therapeutic procedures.

Protein Information

Name	TUBA8
-------------	-------

Synonyms	TUBAL2
Function	Tubulin is the major constituent of microtubules, a cylinder consisting of laterally associated linear protofilaments composed of alpha- and beta-tubulin heterodimers. Microtubules grow by the addition of GTP-tubulin dimers to the microtubule end, where a stabilizing cap forms. Below the cap, tubulin dimers are in GDP-bound state, owing to GTPase activity of alpha-tubulin.
Cellular Location	Cytoplasm, cytoskeleton.
Tissue Location	Preferentially expressed in heart, skeletal muscle and testis. Expressed at low levels in the developing brain. Expressed in megakaryocytes and platelets (PubMed:34704371)

References

1. Am J Hum Genet. 2009 Nov;85(5):737-44. 2. Am J Hum Genet. 2009 Nov;85(5):628-42.

Images

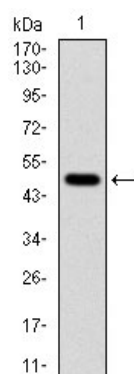


Figure 1: Western blot analysis using TUBA8 mAb against human TUBA8 (AA: 294-449) recombinant protein. (Expected MW is 50 kDa)

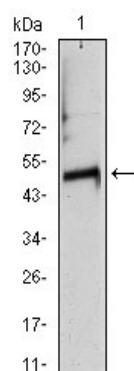


Figure 2: Western blot analysis using TUBA8 mouse mAb against rat heart (1) tissue lysate.

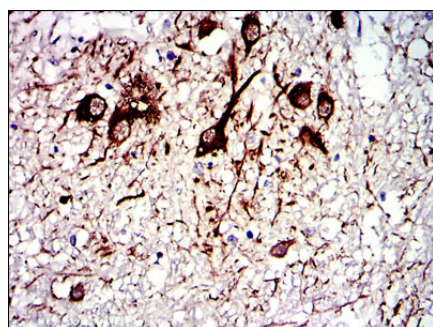


Figure 3: Immunohistochemical analysis of paraffin-embedded medulla oblongata tissues using TUBA8 mouse mAb with DAB staining.

Figure 4: Immunohistochemical analysis of paraffin-embedded liver cancer tissues using TUBA8 mouse mAb with DAB staining.

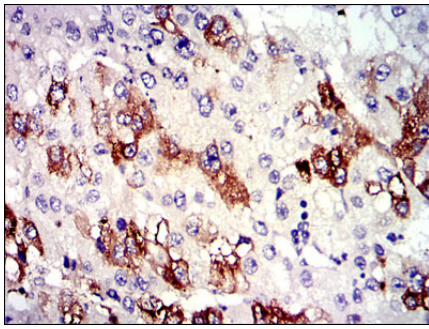


Figure 5: Immunofluorescence analysis of Hela cells using TUBA8 mouse mAb (green). Blue: DRAQ5 fluorescent DNA dye. Red: Actin filaments have been labeled with Alexa Fluor-555 phalloidin.

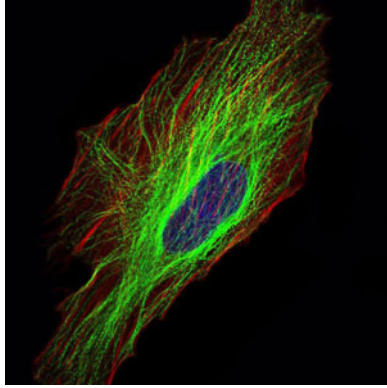
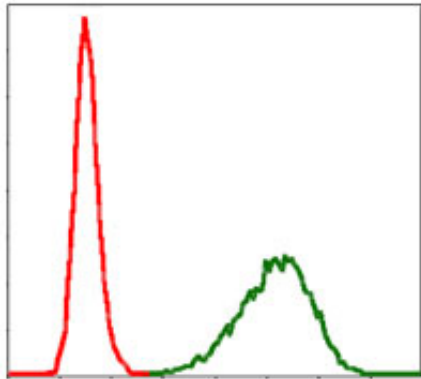


Figure 6: Flow cytometric analysis of NIH/3T3 cells using TUBA8 mouse mAb (green) and negative control (red).



Please note: All products are 'FOR RESEARCH USE ONLY. NOT FOR USE IN DIAGNOSTIC OR THERAPEUTIC PROCEDURES'.