

CD30 Antibody

Purified Mouse Monoclonal Antibody

Catalog # AO1674a

Product Information

Application	WB, FC, E
Primary Accession	P28908
Reactivity	Human
Host	Mouse
Clonality	Monoclonal
Clone Names	3B10
Isotype	IgG1
Calculated MW	63747
Description	The protein encoded by this gene is a member of the TNF-receptor superfamily. This receptor is expressed by activated, but not by resting, T and B cells. TRAF2 and TRAF5 can interact with this receptor, and mediate the signal transduction that leads to the activation of NF-kappaB. This receptor is a positive regulator of apoptosis, and also has been shown to limit the proliferative potential of autoreactive CD8 effector T cells and protect the body against autoimmunity. Two alternatively spliced transcript variants of this gene encoding distinct isoforms have been reported.
Immunogen	Purified recombinant fragment of human CD30 expressed in E. Coli.
Formulation	Ascitic fluid containing 0.03% sodium azide.

Additional Information

Gene ID	943
Other Names	Tumor necrosis factor receptor superfamily member 8, CD30L receptor, Ki-1 antigen, Lymphocyte activation antigen CD30, CD30, TNFRSF8, CD30, D1S166E
Dilution	WB~~1/500 - 1/2000 FC~~1/200 - 1/400 E~~1/10000
Storage	Maintain refrigerated at 2-8°C for up to 6 months. For long term storage store at -20°C in small aliquots to prevent freeze-thaw cycles.
Precautions	CD30 Antibody is for research use only and not for use in diagnostic or therapeutic procedures.

Protein Information

Name	TNFRSF8 (HGNC:11923)
Function	Receptor for TNFSF8/CD30L (PubMed: 8391931). May play a role in the regulation of cellular growth and transformation of activated lymphoblasts. Regulates gene expression through activation of NF-kappa- B (PubMed: 8999898).
Cellular Location	[Isoform 1]: Cell membrane; Single-pass type I membrane protein
Tissue Location	[Isoform 2]: Detected in alveolar macrophages (at protein level).

References

1. Exp Clin Transplant. 2009 Dec;7(4):237-40. 2. Mol Vis. 2009 Oct 17;15:2068-73.

Images

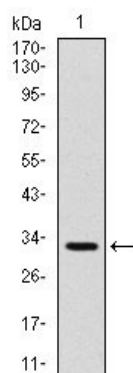


Figure 1: Western blot analysis using CD30 mAb against human CD30 (AA: 536-590) recombinant protein. (Expected MW is 32 kDa)

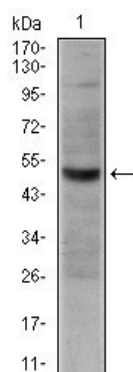


Figure 2: Western blot analysis using CD30 mouse mAb against HeLa cell lysate.

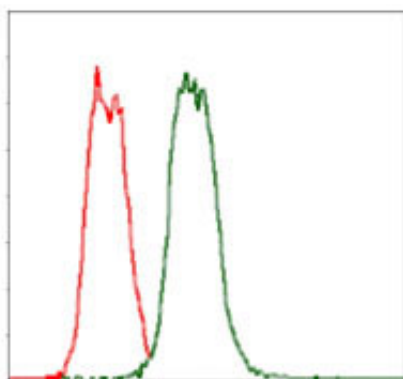


Figure 3: Flow cytometric analysis of HeLa cells using CD30 mouse mAb (green) and negative control (red).

Please note: All products are 'FOR RESEARCH USE ONLY. NOT FOR USE IN DIAGNOSTIC OR THERAPEUTIC PROCEDURES'.