

# human Splunc2 Antibody

Purified Mouse Monoclonal Antibody

Catalog # AO1681a

## Product Information

---

<b>Application</b>	WB, FC, E
<b>Primary Accession</b>	<a href="#">Q96DR5</a>
<b>Reactivity</b>	Human
<b>Host</b>	Mouse
<b>Clonality</b>	Monoclonal
<b>Clone Names</b>	5B2
<b>Isotype</b>	IgG1
<b>Calculated MW</b>	27011
<b>Description</b>	SPLUNC2 is one member of PLUNC family, the gene undergoes alternative splicing using two 5' non-coding exons, suggesting that the gene is regulated by alternative promoters. multiple SPLUNC2 isoforms are found in the oral cavity and suggest that these proteins may be differentially regulated in distinct tissues where they may function in the innate immune response. Mucin plugs, mucous and intermediate cells of mucoepidermoid carcinomas were positive for LPLUNC1 and SPLUNC2, but areas composed of epidermoid and clear cells were negative for all PLUNCs. Papillary cystadenocarcinoma was positive for all PLUNCs.
<b>Immunogen</b>	Purified recombinant fragment of human Splunc2 expressed in E. Coli.
<b>Formulation</b>	Ascitic fluid containing 0.03% sodium azide.

## Additional Information

---

<b>Gene ID</b>	140683
<b>Other Names</b>	BPI fold-containing family A member 2, Parotid secretory protein, PSP, Short palate, lung and nasal epithelium carcinoma-associated protein 2, BPIFA2, C20orf70, SPLUNC2
<b>Dilution</b>	WB~~1/500 - 1/2000 FC~~1/200 - 1/400 E~~1/10000
<b>Storage</b>	Maintain refrigerated at 2-8°C for up to 6 months. For long term storage store at -20°C in small aliquots to prevent freeze-thaw cycles.
<b>Precautions</b>	human Splunc2 Antibody is for research use only and not for use in diagnostic or therapeutic procedures.

## Protein Information

<b>Name</b>	BPIFA2
<b>Synonyms</b>	C20orf70, SPLUNC2
<b>Function</b>	Has strong antibacterial activity against <i>P.aeruginosa</i> .
<b>Cellular Location</b>	Secreted.
<b>Tissue Location</b>	Detected in submandibular gland. Secreted into saliva.

## References

Histochem Cell Biol. 2009 Sep;132(3):339-49. Oral Dis. 2008 Oct;14(7):613-9.

## Images

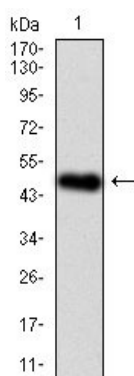


Figure 1: Western blot analysis using human Splunc2 mAb against human Splunc2 (AA: 16-250) recombinant protein. (Expected MW is 50.7 kDa)

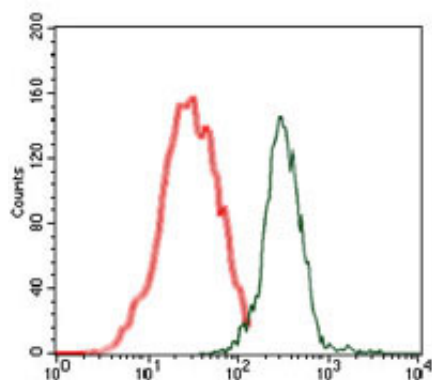


Figure 2: Flow cytometric analysis of MCF-7 cells using human Splunc2 mouse mAb (green) and negative control (red).

Please note: All products are 'FOR RESEARCH USE ONLY. NOT FOR USE IN DIAGNOSTIC OR THERAPEUTIC PROCEDURES'.