

CRP Antibody

Purified Mouse Monoclonal Antibody

Catalog # AO1685a

Product Information

Application	WB, IHC, FC, E
Primary Accession	P02741
Reactivity	Human
Host	Mouse
Clonality	Monoclonal
Clone Names	1G1
Isotype	IgG1
Calculated MW	25039
Description	The protein encoded by this gene belongs to the pentaxin family. It is involved in several host defense related functions based on its ability to recognize foreign pathogens and damaged cells of the host and to initiate their elimination by interacting with humoral and cellular effector systems in the blood. Consequently, the level of this protein in plasma increases greatly during acute phase response to tissue injury, infection, or other inflammatory stimuli.
Immunogen	Purified recombinant fragment of human CRP expressed in E. Coli.
Formulation	Ascitic fluid containing 0.03% sodium azide.

Additional Information

Gene ID	1401
Other Names	C-reactive protein, C-reactive protein(1-205), CRP, PTX1
Dilution	WB~~1/500 - 1/2000 IHC~~1/200 - 1/1000 FC~~1/200 - 1/400 E~~1/10000
Storage	Maintain refrigerated at 2-8°C for up to 6 months. For long term storage store at -20°C in small aliquots to prevent freeze-thaw cycles.
Precautions	CRP Antibody is for research use only and not for use in diagnostic or therapeutic procedures.

Protein Information

Name	CRP
-------------	-----

Synonyms

PTX1

Function

Displays several functions associated with host defense: it promotes agglutination, bacterial capsular swelling, phagocytosis and complement fixation through its calcium-dependent binding to phosphorylcholine. Can interact with DNA and histones and may scavenge nuclear material released from damaged circulating cells.

Cellular Location

Secreted.

Tissue Location

Found in plasma.

References

1. Clin Cardiol. 2010 Nov;33(11):708-14. 2. Mol Cell Biochem. 2011 Jan;347(1-2):183-9.

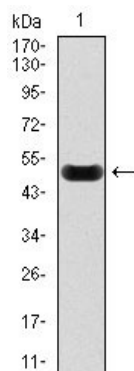
Images

Figure 1: Western blot analysis using CRP mAb against human CRP recombinant protein. (AA: 1-224, Expected MW is 51 kDa)

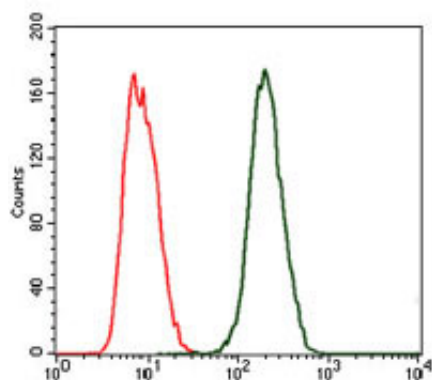


Figure 2: Flow cytometric analysis of MCF-7 cells using CRP mouse mAb (green) and negative control (red).

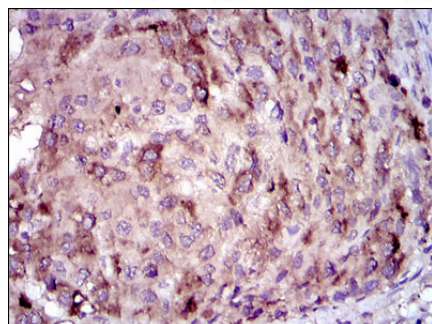


Figure 3: Immunohistochemical analysis of paraffin-embedded liver cancer tissues using CRP mouse mAb with DAB staining.

Please note: All products are 'FOR RESEARCH USE ONLY. NOT FOR USE IN DIAGNOSTIC OR THERAPEUTIC PROCEDURES'.