

MAP2 Antibody

Purified Mouse Monoclonal Antibody

Catalog # AO1727a

Product Information

Application	WB, FC, E
Primary Accession	P11137
Reactivity	Human
Host	Mouse
Clonality	Monoclonal
Clone Names	5B7
Isotype	IgG1
Calculated MW	199526
Description	This gene encodes a protein that belongs to the microtubule-associated protein family. The proteins of this family are thought to be involved in microtubule assembly, which is an essential step in neurogenesis. The products of similar genes in rat and mouse are neuron-specific cytoskeletal proteins that are enriched in dendrites, implicating a role in determining and stabilizing dendritic shape during neuron development. A number of alternatively spliced variants encoding distinct isoforms have been described.
Immunogen	Purified recombinant fragment of human MAP2 (AA: 24-123) expressed in E. Coli.
Formulation	Purified antibody in PBS with 0.05% sodium azide

Additional Information

Gene ID	4133
Other Names	Microtubule-associated protein 2, MAP-2, MAP2
Dilution	WB~~1/500 - 1/2000 FC~~1/200 - 1/400 E~~1/10000
Storage	Maintain refrigerated at 2-8°C for up to 6 months. For long term storage store at -20°C in small aliquots to prevent freeze-thaw cycles.
Precautions	MAP2 Antibody is for research use only and not for use in diagnostic or therapeutic procedures.

Protein Information

Name	MAP2
-------------	------

Function	The exact function of MAP2 is unknown but MAPs may stabilize the microtubules against depolymerization. They also seem to have a stiffening effect on microtubules.
Cellular Location	Cytoplasm, cytoskeleton. Cell projection, dendrite {ECO:0000250 UniProtKB:P20357}

References

1.J Biol Chem. 2010 Jan 1;285(1):242-54. 2.Am J Clin Pathol. 2009 May;131(5):710-4.

Images

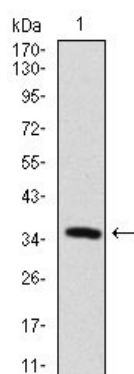


Figure 1: Western blot analysis using MAP2 mAb against human MAP2 recombinant protein. (Expected MW is 36.1 kDa)

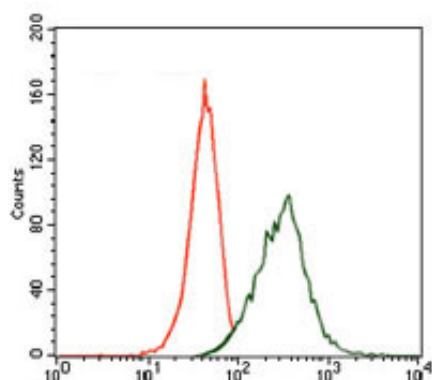


Figure 2: Flow cytometric analysis of HeLa cells using MAP2 mouse mAb (green) and negative control (red).

Please note: All products are 'FOR RESEARCH USE ONLY. NOT FOR USE IN DIAGNOSTIC OR THERAPEUTIC PROCEDURES'.