

MYF6 Antibody

Purified Mouse Monoclonal Antibody

Catalog # AO1728a

Product Information

Application	WB, E
Primary Accession	P23409
Reactivity	Human
Host	Mouse
Clonality	Monoclonal
Clone Names	5D7
Isotype	IgG1
Calculated MW	26953
Description	The protein encoded by this gene is a probable basic helix-loop-helix (bHLH) DNA binding protein involved in muscle differentiation. The encoded protein likely acts as a heterodimer with another bHLH protein. Defects in this gene are a cause of autosomal dominant centronuclear myopathy (ADCNM).
Immunogen	Purified recombinant fragment of human MYF6 (AA: 85-150) expressed in E. Coli.
Formulation	Purified antibody in PBS with 0.05% sodium azide

Additional Information

Gene ID	4618
Other Names	Myogenic factor 6, Myf-6, Class C basic helix-loop-helix protein 4, bHLHc4, Muscle-specific regulatory factor 4, MYF6, BHLHC4, MRF4
Dilution	WB~~1/500 - 1/2000 E~~1/10000
Storage	Maintain refrigerated at 2-8°C for up to 6 months. For long term storage store at -20°C in small aliquots to prevent freeze-thaw cycles.
Precautions	MYF6 Antibody is for research use only and not for use in diagnostic or therapeutic procedures.

Protein Information

Name	MYF6
Synonyms	BHLHC4, MRF4

Function	Involved in muscle differentiation (myogenic factor). Induces fibroblasts to differentiate into myoblasts. Probable sequence specific DNA-binding protein.
Cellular Location	Nucleus.
Tissue Location	Skeletal muscle.

References

1.J Bone Miner Res. 2009 Dec;24(12):2039-49. 2.J Appl Physiol. 2006 Aug;101(2):531-44.

Images

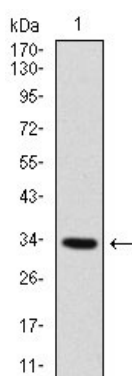


Figure 1: Western blot analysis using MYF6 mAb against human MYF6 recombinant protein. (Expected MW is 33.4 kDa)

Please note: All products are 'FOR RESEARCH USE ONLY. NOT FOR USE IN DIAGNOSTIC OR THERAPEUTIC PROCEDURES'.