

ALCAM Antibody

Purified Mouse Monoclonal Antibody

Catalog # AO1748a

Product Information

Application	WB, IHC, E
Primary Accession	Q13740
Reactivity	Human
Host	Mouse
Clonality	Monoclonal
Clone Names	5B3
Isotype	IgG1
Calculated MW	65102
Description	This gene encodes activated leukocyte cell adhesion molecule (ALCAM), also known as CD166 (cluster of differentiation 166), which is a member of a subfamily of immunoglobulin receptors with five immunoglobulin-like domains (VVC2C2C2) in the extracellular domain. This protein binds to T-cell differentiation antigene CD6, and is implicated in the processes of cell adhesion and migration. Multiple alternatively spliced transcript variants encoding different isoforms have been found.
Immunogen	Purified recombinant fragment of human ALCAM (AA: 405-524) expressed in E. Coli.
Formulation	Purified antibody in PBS with 0.05% sodium azide

Additional Information

Gene ID	214
Other Names	CD166 antigen, Activated leukocyte cell adhesion molecule, CD166, ALCAM, MEMD
Dilution	WB~~1/500 - 1/2000 IHC~~1/200 - 1/1000 E~~1/10000
Storage	Maintain refrigerated at 2-8°C for up to 6 months. For long term storage store at -20°C in small aliquots to prevent freeze-thaw cycles.
Precautions	ALCAM Antibody is for research use only and not for use in diagnostic or therapeutic procedures.

Protein Information

Name	ALCAM
-------------	-------

Synonyms	MEMD {ECO:0000303 PubMed:9502422}
Function	<p>Cell adhesion molecule that mediates both heterotypic cell- cell contacts via its interaction with CD6, as well as homotypic cell- cell contacts (PubMed:15048703, PubMed:15496415, PubMed:16352806, PubMed:23169771, PubMed:24945728, PubMed:7760007). Promotes T-cell activation and proliferation via its interactions with CD6 (PubMed:15048703, PubMed:16352806, PubMed:24945728). Contributes to the formation and maturation of the immunological synapse via its interactions with CD6 (PubMed:15294938, PubMed:16352806). Mediates homotypic interactions with cells that express ALCAM (PubMed:15496415, PubMed:16352806). Acts as a ligand for the LILRB4 receptor, enhancing LILRB4-mediated inhibition of T cell proliferation (PubMed:29263213). Required for normal hematopoietic stem cell engraftment in the bone marrow (PubMed:24740813). Mediates attachment of dendritic cells onto endothelial cells via homotypic interaction (PubMed:23169771). Inhibits endothelial cell migration and promotes endothelial tube formation via homotypic interactions (PubMed:15496415, PubMed:23169771). Required for normal organization of the lymph vessel network. Required for normal hematopoietic stem cell engraftment in the bone marrow. Plays a role in hematopoiesis; required for normal numbers of hematopoietic stem cells in bone marrow. Promotes in vitro osteoblast proliferation and differentiation (By similarity). Promotes neurite extension, axon growth and axon guidance; axons grow preferentially on surfaces that contain ALCAM. Mediates outgrowth and pathfinding for retinal ganglion cell axons (By similarity).</p>
Cellular Location	<p>Cell membrane; Single-pass type I membrane protein. Cell projection, axon {ECO:0000250 UniProtKB:Q61490}. Cell projection, dendrite {ECO:0000250 UniProtKB:Q61490}. Note=Detected at the immunological synapse, i.e, at the contact zone between antigen-presenting dendritic cells and T-cells (PubMed:15294938, PubMed:16352806). Colocalizes with CD6 and the TCR/CD3 complex at the immunological synapse (PubMed:15294938).</p>
Tissue Location	<p>Detected on hematopoietic stem cells derived from umbilical cord blood (PubMed:24740813). Detected on lymph vessel endothelial cells, skin and tonsil (PubMed:23169771). Detected on peripheral blood monocytes (PubMed:15048703). Detected on monocyte- derived dendritic cells (at protein level) (PubMed:16352806). Detected at low levels in spleen, placenta, liver (PubMed:9502422). Expressed by activated T-cells, B-cells, monocytes and thymic epithelial cells (PubMed:7760007). Isoform 1 and isoform 3 are detected in vein and artery endothelial cells, astrocytes, keratinocytes and artery smooth muscle cells (PubMed:15496415). Expressed by neurons in the brain Restricted expression in tumor cell lines. Detected in highly metastasizing melanoma cell lines (PubMed:9502422)</p>

References

1.Vascul Pharmacol. 2011 Mar-Jun;54(3-6):93-9.2.Int J Gynecol Cancer. 2011 Apr;21(3):523-8.

Images

Figure 1: Western blot analysis using ALCAM mAb against human ALCAM recombinant protein. (Expected MW is 26.3 kDa)

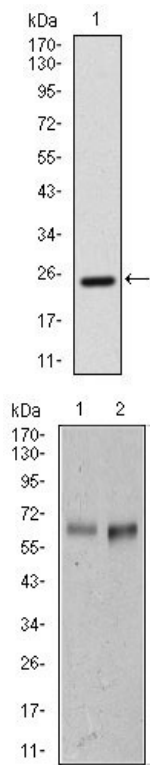


Figure 2: Western blot analysis using AICAM mouse mAb against L1210 (1) cell lysate, and Mouse spleen (2) tissue lysate.

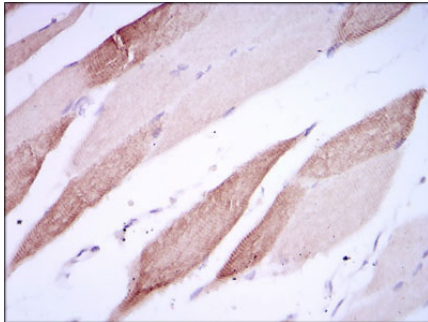


Figure 3: Immunohistochemical analysis of paraffin-embedded striated muscle tissues using AICAM mouse mAb with DAB staining.

Please note: All products are 'FOR RESEARCH USE ONLY. NOT FOR USE IN DIAGNOSTIC OR THERAPEUTIC PROCEDURES'.