

LMO2 Antibody

Purified Mouse Monoclonal Antibody

Catalog # AO1769a

Product Information

Application	WB, FC, E
Primary Accession	P25791
Reactivity	Human
Host	Mouse
Clonality	Monoclonal
Clone Names	4D8
Isotype	IgG1
Calculated MW	18358
Description	LMO2 encodes a cysteine-rich, two LIM-domain protein that is required for yolk sac erythropoiesis. The LMO2 protein has a central and crucial role in hematopoietic development and is highly conserved. The LMO2 transcription start site is located approximately 25 kb downstream from the 11p13 T-cell translocation cluster (11p13 ttc), where a number T-cell acute lymphoblastic leukemia-specific translocations occur. Alternative splicing results in multiple transcript variants encoding different isoforms.
Immunogen	Purified recombinant fragment of human LMO2 (AA: 1-158) expressed in E. Coli.
Formulation	Purified antibody in PBS with 0.05% sodium azide

Additional Information

Gene ID	4005
Other Names	Rhombotin-2, Cysteine-rich protein TTG-2, LIM domain only protein 2, LMO-2, T-cell translocation protein 2, LMO2, RBTN2, RBTNL1, RHOM2, TTG2
Dilution	WB~~1/500 - 1/2000 FC~~1:10~50 E~~1/10000
Storage	Maintain refrigerated at 2-8°C for up to 6 months. For long term storage store at -20°C in small aliquots to prevent freeze-thaw cycles.
Precautions	LMO2 Antibody is for research use only and not for use in diagnostic or therapeutic procedures.

Protein Information

Name	LMO2
-------------	------

Synonyms

RBTN2, RBTN1, RHOM2, TTG2

Function

Acts with TAL1/SCL to regulate red blood cell development. Also acts with LDB1 to maintain erythroid precursors in an immature state.

Cellular Location

Nucleus.

References

1.FEBS J. 2011 Sep;278(17):3065-75. 2.Leuk Lymphoma. 2011 Jun;52(6):1146-9.

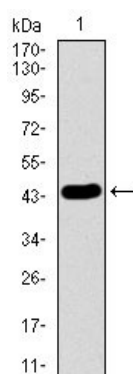
Images

Figure 1: Western blot analysis using LMO2 mAb against human LMO2 recombinant protein. (Expected MW is 43.9 kDa)

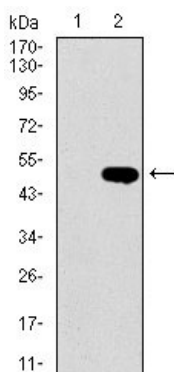


Figure 2: Western blot analysis using LMO2 mAb against HEK293 (1) and LMO2 (AA: 1-158)-hIgGfc transfected HEK293 (2) cell lysate.

Please note: All products are 'FOR RESEARCH USE ONLY. NOT FOR USE IN DIAGNOSTIC OR THERAPEUTIC PROCEDURES'.