

STAT5A Antibody

Purified Mouse Monoclonal Antibody

Catalog # AO1770a

Product Information

Application	WB, IHC, FC, ICC, E
Primary Accession	P42229
Reactivity	Human
Host	Mouse
Clonality	Monoclonal
Clone Names	6D4
Isotype	IgG1
Calculated MW	90647
Description	The protein encoded by this gene is a member of the STAT family of transcription factors. In response to cytokines and growth factors, STAT family members are phosphorylated by the receptor associated kinases, and then form homo- or heterodimers that translocate to the cell nucleus where they act as transcription activators. This protein is activated by, and mediates the responses of many cell ligands, such as IL2, IL3, IL7 GM-CSF, erythropoietin, thrombopoietin, and different growth hormones. Activation of this protein in myeloma and lymphoma associated with a TEL/JAK2 gene fusion is independent of cell stimulus and has been shown to be essential for the tumorigenesis. The mouse counterpart of this gene is found to induce the expression of BCL2L1/BCL-X(L), which suggests the antiapoptotic function of this gene in cells.
Immunogen	Purified recombinant fragment of human STAT5A (AA: 583-794) expressed in E. Coli.
Formulation	Purified antibody in PBS with 0.05% sodium azide

Additional Information

Gene ID	6776
Other Names	Signal transducer and activator of transcription 5A, STAT5A, STAT5
Dilution	WB~~1/500 - 1/2000 IHC~~1/200 - 1/1000 FC~~1/200 - 1/400 ICC~~N/A E~~1/10000
Storage	Maintain refrigerated at 2-8°C for up to 6 months. For long term storage store at -20°C in small aliquots to prevent freeze-thaw cycles.
Precautions	STAT5A Antibody is for research use only and not for use in diagnostic or therapeutic procedures.

Protein Information

Name	STAT5A
Synonyms	STAT5
Function	Carries out a dual function: signal transduction and activation of transcription. Mediates cellular responses to the cytokine KITLG/SCF and other growth factors. Mediates cellular responses to ERBB4. May mediate cellular responses to activated FGFR1, FGFR2, FGFR3 and FGFR4. Binds to the GAS element and activates PRL- induced transcription. Regulates the expression of milk proteins during lactation.
Cellular Location	Cytoplasm. Nucleus. Note=Translocated into the nucleus in response to phosphorylation

References

1.Cancer Res. 2011 May 15;71(10):3720-31. 2.Blood. 2011 Mar 24;117(12):3409-20.

Images

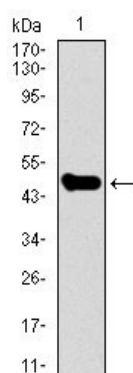


Figure 1: Western blot analysis using STAT5A mAb against human STAT5A recombinant protein. (Expected MW is 49.3 kDa)

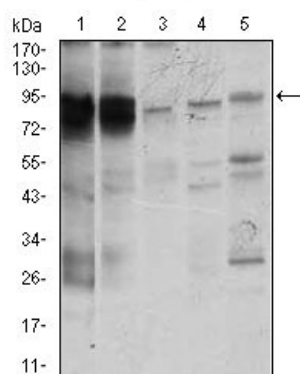


Figure 2: Western blot analysis using STAT5A mouse mAb against K562 (1), MOLT4 (2), HeLa (3), Jurkat (4), and A431 (5) cell lysate.

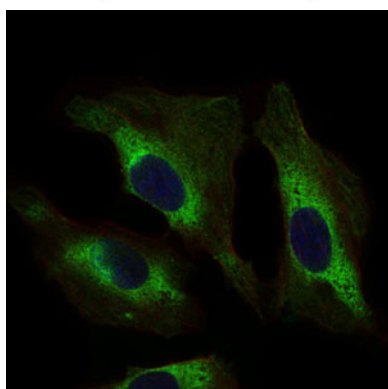


Figure 3: Immunofluorescence analysis of HeLa cells using STAT5A mouse mAb (green). Blue: DRAQ5 fluorescent DNA dye.

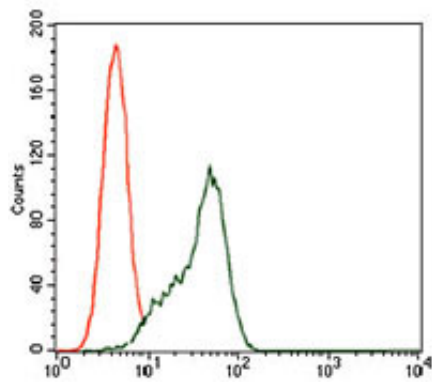


Figure 4: Flow cytometric analysis of K562 cells using STAT5A mouse mAb (green) and negative control (red).

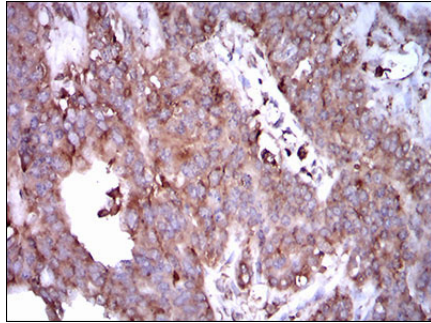


Figure 5: Immunohistochemical analysis of paraffin-embedded ovarian cancer tissues using STAT5A mouse mAb with DAB staining.

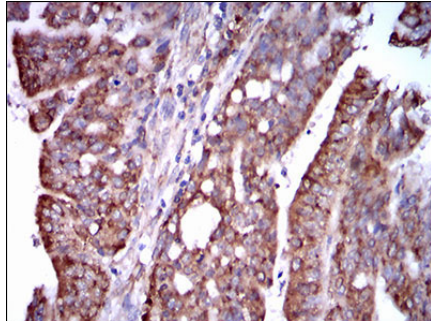


Figure 6: Immunohistochemical analysis of paraffin-embedded rectum cancer tissues using STAT5A mouse mAb with DAB staining.

Please note: All products are 'FOR RESEARCH USE ONLY. NOT FOR USE IN DIAGNOSTIC OR THERAPEUTIC PROCEDURES'.