

TRIP6 Antibody

Purified Mouse Monoclonal Antibody

Catalog # AO1771a

Product Information

Application	WB, FC, E
Primary Accession	Q15654
Reactivity	Human
Host	Mouse
Clonality	Monoclonal
Clone Names	6H4
Isotype	IgG1
Calculated MW	50288
Description	This gene is a member of the zyxin family and encodes a protein with three LIM zinc-binding domains. This protein localizes to focal adhesion sites and along actin stress fibers. Recruitment of this protein to the plasma membrane occurs in a lysophosphatidic acid (LPA)-dependent manner and it regulates LPA-induced cell migration. Alternatively spliced variants which encode different protein isoforms have been described; however, not all variants have been fully characterized.
Immunogen	Purified recombinant fragment of human TRIP6 (AA: 107-291) expressed in E. Coli.
Formulation	Purified antibody in PBS with 0.05% sodium azide

Additional Information

Gene ID	7205
Other Names	Thyroid receptor-interacting protein 6, TR-interacting protein 6, TRIP-6, Opa-interacting protein 1, OIP-1, Zyxin-related protein 1, ZRP-1, TRIP6, OIP1
Dilution	WB~~1/500 - 1/2000 FC~~1/200 - 1/400 E~~1/10000
Storage	Maintain refrigerated at 2-8°C for up to 6 months. For long term storage store at -20°C in small aliquots to prevent freeze-thaw cycles.
Precautions	TRIP6 Antibody is for research use only and not for use in diagnostic or therapeutic procedures.

Protein Information

Name	TRIP6
-------------	-------

Synonyms	OIP1
Function	Relays signals from the cell surface to the nucleus to weaken adherens junction and promote actin cytoskeleton reorganization and cell invasiveness. Involved in lysophosphatidic acid-induced cell adhesion and migration. Acts as a transcriptional coactivator for NF- kappa-B and JUN, and mediates the transrepression of these transcription factors induced by glucocorticoid receptor.
Cellular Location	Cytoplasm, cytoskeleton. Cell junction, focal adhesion. Nucleus. Cytoplasm Note=Shuttles between nucleus and cytoplasm (PubMed:16624523) Colocalizes with actin (PubMed:10826496).
Tissue Location	Abundantly expressed in kidney, liver and lung. Lower levels in heart, placenta and pancreas. Expressed in colonic epithelial cells. Up-regulated in colonic tumors

References

1.Biol Cell. 2011 Dec 1;103(12):573-91. 2.Mol Cell Biol. 2010 Dec;30(23):5582-96.

Images

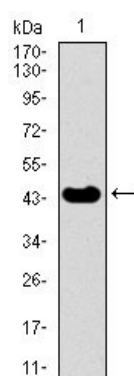


Figure 1: Western blot analysis using TRIP6 mAb against human TRIP6 recombinant protein. (Expected MW is 44.4 kDa)

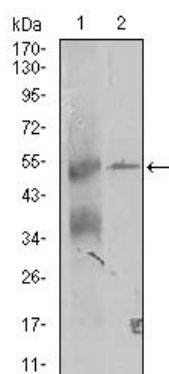


Figure 2: Western blot analysis using TRIP6 mouse mAb against K562 and A431 (2) cell lysate.

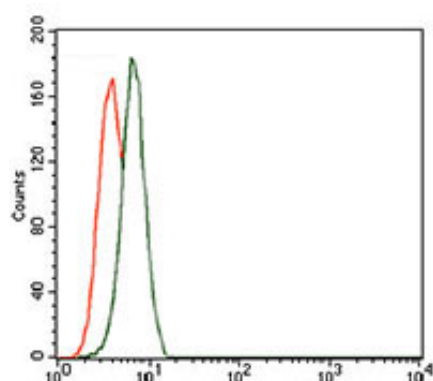


Figure 3: Flow cytometric analysis of K562 cells using TRIP6 mouse mAb (green) and negative control (red).

Please note: All products are 'FOR RESEARCH USE ONLY. NOT FOR USE IN DIAGNOSTIC OR THERAPEUTIC PROCEDURES'.