

# mouse Lplunc1 Antibody

Purified Mouse Monoclonal Antibody  
Catalog # AO1776a

## Product Information

---

<b>Application</b>	WB, E
<b>Primary Accession</b>	<a href="#">Q61114</a>
<b>Reactivity</b>	Mouse
<b>Host</b>	Mouse
<b>Clonality</b>	Monoclonal
<b>Clone Names</b>	1F11E3
<b>Isotype</b>	IgG1
<b>Calculated MW</b>	52455
<b>Description</b>	Palate, lung, and nasal epithelium clone (Plunc, now renamed Splunc1) is a small secreted protein expressed in the oropharynx and upper airways of humans, mice, rats, and cows. This protein is structurally homologous to known mediators of host defense against gram-negative bacteria.
<b>Immunogen</b>	Purified recombinant fragment of mouse Lplunc1 (AA: 248-475) expressed in E. Coli.
<b>Formulation</b>	Purified antibody in PBS with 0.05% sodium azide

## Additional Information

---

<b>Gene ID</b>	228801
<b>Other Names</b>	BPI fold-containing family B member 1, Long palate, lung and nasal epithelium carcinoma-associated protein 1, Bpifb1, Lplunc1
<b>Dilution</b>	WB~~1/500 - 1/2000 E~~1/10000
<b>Storage</b>	Maintain refrigerated at 2-8°C for up to 6 months. For long term storage store at -20°C in small aliquots to prevent freeze-thaw cycles.
<b>Precautions</b>	mouse Lplunc1 Antibody is for research use only and not for use in diagnostic or therapeutic procedures.

## Protein Information

---

<b>Name</b>	Bpifb1
<b>Synonyms</b>	Lplunc1
<b>Function</b>	May play a role in innate immunity in mouth, nose and lungs. Binds bacterial

lipopolysaccharide (LPS) and modulates the cellular responses to LPS. May be involved in formation of the left-right axis in the node of the developing embryo.

**Cellular Location**

Secreted.

**Tissue Location**

Expressed in tongue, lung, thymus, and stomach. Expressed in epithelia of palate, anterior pharynx, trachea and upper bronchi. Expressed in distal tip of papillae in the anterior third of the tongue and in serous cells of von Ebner glands in the posterior third of the tongue. Expressed in columnar epithelium of the duodenum in embryonic gut at 16.5 dpc.

**References**

---

1. Briand F, et al. Clin Transl Sci, 2011 Dec. 2. Tang T, et al. Nat Biotechnol, 2010 Jul.

**Images**

---

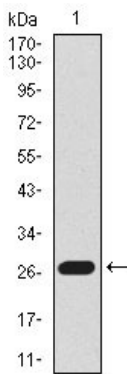


Figure 1: Western blot analysis using Lplunc1 mAb against mouse Lplunc1 recombinant protein. (Expected MW is 27.8 kDa)

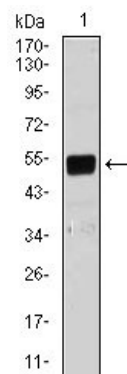


Figure 2: Western blot analysis using Lplunc1 mouse mAb against NIH3T3 (1) cell lysate.

Please note: All products are 'FOR RESEARCH USE ONLY. NOT FOR USE IN DIAGNOSTIC OR THERAPEUTIC PROCEDURES'.