

# PHC1 Antibody

Purified Mouse Monoclonal Antibody

Catalog # AO1803a

## Product Information

---

<b>Application</b>	WB, FC, E
<b>Primary Accession</b>	<a href="#">P78364</a>
<b>Reactivity</b>	Human
<b>Host</b>	Mouse
<b>Clonality</b>	Monoclonal
<b>Clone Names</b>	1F3F3
<b>Isotype</b>	IgG1
<b>Calculated MW</b>	105534
<b>Description</b>	This gene is a homolog of the Drosophila polyhomeotic gene, which is a member of the Polycomb group of genes. The gene product is a component of a multimeric protein complex that contains EDR2 and the vertebrate Polycomb protein BMH1. The gene product, the EDR2 protein, and the Drosophila polyhomeotic protein share 2 highly conserved domains, named homology domains I and II. These domains are involved in protein-protein interactions and may mediate heterodimerization of the protein encoded by this gene and the EDR2 protein.
<b>Immunogen</b>	Purified recombinant fragment of human PHC1 (AA: 758-1004) expressed in E. Coli.
<b>Formulation</b>	Purified antibody in PBS with 0.05% sodium azide

## Additional Information

---

<b>Gene ID</b>	1911
<b>Other Names</b>	Polyhomeotic-like protein 1, hPH1, Early development regulatory protein 1, PHC1, EDR1, PH1
<b>Dilution</b>	WB~~1/500 - 1/2000 FC~~1/200 - 1/400 E~~1/10000
<b>Storage</b>	Maintain refrigerated at 2-8°C for up to 6 months. For long term storage store at -20°C in small aliquots to prevent freeze-thaw cycles.
<b>Precautions</b>	PHC1 Antibody is for research use only and not for use in diagnostic or therapeutic procedures.

## Protein Information

---

<b>Name</b>	PHC1
-------------	------

**Synonyms**

EDR1, PH1

**Function**

Component of a Polycomb group (PcG) multiprotein PRC1-like complex, a complex class required to maintain the transcriptionally repressive state of many genes, including Hox genes, throughout development. PcG PRC1 complex acts via chromatin remodeling and modification of histones; it mediates monoubiquitination of histone H2A 'Lys-119', rendering chromatin heritably changed in its expressibility. Required for proper control of cellular levels of GMNN expression.

**Cellular Location**

Nucleus

**References**

1. Development. 2007 Feb;134(3):579-90. 2. Nature. 2006 May 18;441(7091):349-53.

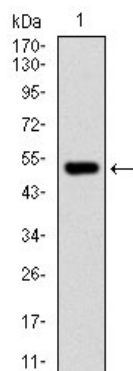
**Images**

Figure 1: Western blot analysis using PHC1 mAb against human PHC1 recombinant protein. (Expected MW is 52.8 kDa)

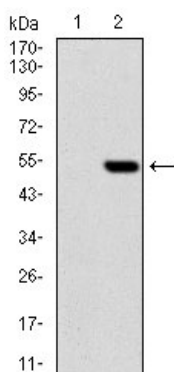


Figure 2: Western blot analysis using PHC1 mAb against HEK293 (1) and PHC1 (AA: 758-1004)-hIgGfc transfected HEK293 (2) cell lysate.

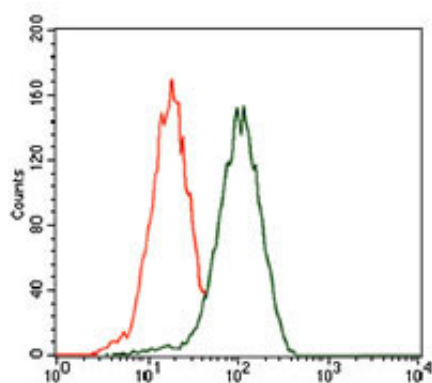


Figure 3: Flow cytometric analysis of HEK293 cells using PHC1 mouse mAb (green) and negative control (red).

Please note: All products are 'FOR RESEARCH USE ONLY. NOT FOR USE IN DIAGNOSTIC OR THERAPEUTIC PROCEDURES'.