

# CD24 Antibody

Purified Mouse Monoclonal Antibody

Catalog # AO1822a

## Product Information

---

<b>Application</b>	WB, FC, E
<b>Primary Accession</b>	<a href="#">P25063</a>
<b>Reactivity</b>	Human
<b>Host</b>	Mouse
<b>Clonality</b>	Monoclonal
<b>Clone Names</b>	4F4E10
<b>Isotype</b>	IgG1
<b>Calculated MW</b>	8083
<b>Description</b>	This gene encodes a sialoglycoprotein that is expressed on mature granulocytes and in many B cells. The encoded protein is anchored via a glycosyl phosphatidylinositol (GPI) link to the cell surface.
<b>Immunogen</b>	Purified recombinant fragment of human CD24 (AA: 15-80) expressed in E. Coli.
<b>Formulation</b>	Purified antibody in PBS with 0.05% sodium azide

## Additional Information

---

<b>Gene ID</b>	100133941
<b>Other Names</b>	Signal transducer CD24, Small cell lung carcinoma cluster 4 antigen, CD24, CD24, CD24A
<b>Dilution</b>	WB~~1/500 - 1/2000 FC~~1/200 - 1/400 E~~1/10000
<b>Storage</b>	Maintain refrigerated at 2-8°C for up to 6 months. For long term storage store at -20°C in small aliquots to prevent freeze-thaw cycles.
<b>Precautions</b>	CD24 Antibody is for research use only and not for use in diagnostic or therapeutic procedures.

## Protein Information

---

<b>Name</b>	CD24
<b>Synonyms</b>	CD24A
<b>Function</b>	May have a pivotal role in cell differentiation of different cell types. Signaling could be triggered by the binding of a lectin- like ligand to the CD24

carbohydrates, and transduced by the release of second messengers derived from the GPI-anchor. Modulates B-cell activation responses. Promotes AG-dependent proliferation of B-cells, and prevents their terminal differentiation into antibody-forming cells (PubMed:[11313396](#)). In association with SIGLEC10 may be involved in the selective suppression of the immune response to danger-associated molecular patterns (DAMPs) such as HMGB1, HSP70 and HSP90. Plays a role in the control of autoimmunity (By similarity).

**Cellular Location**

Cell membrane; Lipid-anchor, GPI-anchor.

**Tissue Location**

B-cells. Expressed in a number of B-cell lines including P32/ISH and Namalwa. Expressed in erythroleukemia cell and small cell lung carcinoma cell lines. Also expressed on the surface of T-cells.

## Background

This gene encodes a sialoglycoprotein that is expressed on mature granulocytes and in many B cells. The encoded protein is anchored via a glycosyl phosphatidylinositol (GPI) link to the cell surface. ; ;

## References

1. Cancer Res. 2012 Nov 1;72(21):5600-12. 2. Stem Cell Rev. 2012 Sep;8(3):779-91.

## Images

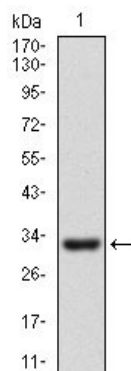


Figure 1: Western blot analysis using CD24 mAb against human CD24 recombinant protein. (Expected MW is 32.1 kDa)

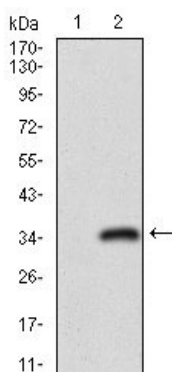
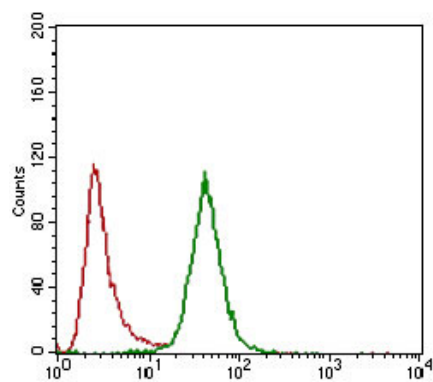


Figure 2: Western blot analysis using CD24 mAb against HEK293 (1) and CD24 (AA: 15-80)-hIgGfc transfected HEK293 (2) cell lysate.

Figure 3: Flow cytometric analysis of Hela cells using CD24 mouse mAb (green) and negative control (red).



Please note: All products are 'FOR RESEARCH USE ONLY. NOT FOR USE IN DIAGNOSTIC OR THERAPEUTIC PROCEDURES'.