

CLGN Antibody

Purified Mouse Monoclonal Antibody

Catalog # AO1826a

Product Information

Application	WB, IHC, ICC, E
Primary Accession	O14967
Reactivity	Human
Host	Mouse
Clonality	Monoclonal
Clone Names	1C8B6
Isotype	IgG1
Calculated MW	70039
Description	Calmegin is a testis-specific endoplasmic reticulum chaperone protein. CLGN may play a role in spermatogenesis and infertility.
Immunogen	Purified recombinant fragment of human CLGN (AA: 249-405) expressed in E. Coli.
Formulation	Purified antibody in PBS with 0.05% sodium azide

Additional Information

Gene ID	1047
Other Names	Calmegin, CLGN
Dilution	WB~~1/500 - 1/2000 IHC~~1/200 - 1/1000 ICC~~N/A E~~1/10000
Storage	Maintain refrigerated at 2-8°C for up to 6 months. For long term storage store at -20°C in small aliquots to prevent freeze-thaw cycles.
Precautions	CLGN Antibody is for research use only and not for use in diagnostic or therapeutic procedures.

Protein Information

Name	CLGN
Function	Functions during spermatogenesis as a chaperone for a range of client proteins that are important for sperm adhesion onto the egg zona pellucida and for subsequent penetration of the zona pellucida. Required for normal sperm migration from the uterus into the oviduct. Required for normal male fertility. Binds calcium ions (By similarity).

Cellular Location	Endoplasmic reticulum membrane; Single-pass type I membrane protein
Tissue Location	Detected in testis (at protein level). Detected in testis.

Background

Calmegin is a testis-specific endoplasmic reticulum chaperone protein. CLGN may play a role in spermatogenesis and infertility. ; ;

References

1. Arch Histol Cytol. 1999 Aug;62(3):283-93. 2. Dev Biol. 2001 Dec 1;240(1):254-61.

Images

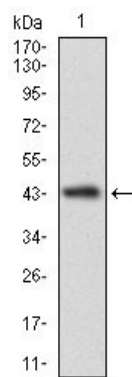


Figure 1: Western blot analysis using CLGN mAb against human CLGN recombinant protein. (Expected MW is 43.5 kDa)

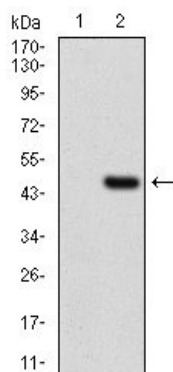


Figure 2: Western blot analysis using CLGN mAb against HEK293 (1) and CLGN (AA: 249-405)-hIgGFc transfected HEK293 (2) cell lysate.

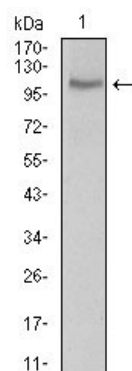


Figure 3: Western blot analysis using CLGN mouse mAb against LNCAP cell lysate.

Figure 4: Immunofluorescence analysis of Hela cells using CLGN mouse mAb (green). Blue: DRAQ5 fluorescent DNA dye. Red: Actin filaments have been labeled with Alexa Fluor-555 phalloidin.

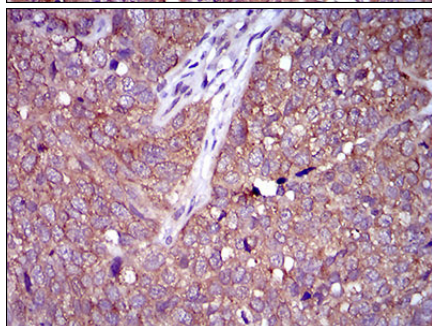
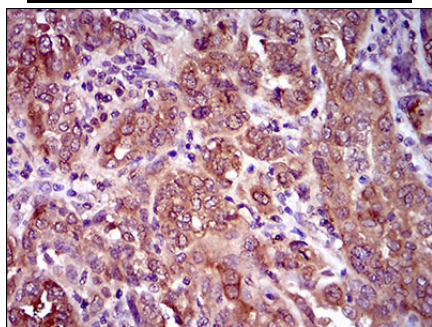
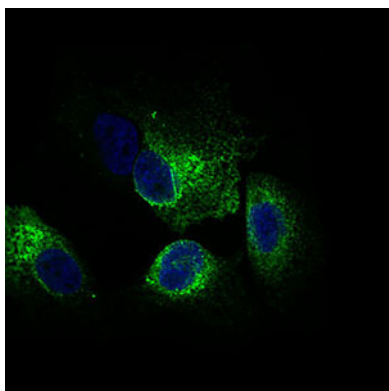


Figure 5: Immunohistochemical analysis of paraffin-embedded endometrial cancer tissues using CLGN mouse mAb with DAB staining.

Figure 6: Immunohistochemical analysis of paraffin-embedded bladder cancer tissues using CLGN mouse mAb with DAB staining.

Please note: All products are 'FOR RESEARCH USE ONLY. NOT FOR USE IN DIAGNOSTIC OR THERAPEUTIC PROCEDURES'.