

PRKACA Antibody

Purified Mouse Monoclonal Antibody

Catalog # AO1946a

Product Information

Application	WB, E
Primary Accession	P17612
Reactivity	Human
Host	Mouse
Clonality	Monoclonal
Clone Names	7H3A4
Isotype	IgG1
Calculated MW	40590
Description	cAMP is a signaling molecule important for a variety of cellular functions. cAMP exerts its effects by activating the cAMP-dependent protein kinase, which transduces the signal through phosphorylation of different target proteins. The inactive kinase holoenzyme is a tetramer composed of two regulatory and two catalytic subunits. cAMP causes the dissociation of the inactive holoenzyme into a dimer of regulatory subunits bound to four cAMP and two free monomeric catalytic subunits. Four different regulatory subunits and three catalytic subunits have been identified in humans. The protein encoded by this gene is a member of the Ser/Thr protein kinase family and is a catalytic subunit of cAMP-dependent protein kinase. Alternatively spliced transcript variants encoding distinct isoforms have been observed.
Immunogen	Purified recombinant fragment of human PRKACA (AA: 1-120) expressed in E. Coli.
Formulation	Purified antibody in PBS with 0.05% sodium azide.

Additional Information

Gene ID	5566
Other Names	cAMP-dependent protein kinase catalytic subunit alpha, PKA C-alpha, 2.7.11.11, PRKACA, PKACA
Dilution	WB~~1/500 - 1/2000 E~~1/10000
Storage	Maintain refrigerated at 2-8°C for up to 6 months. For long term storage store at -20°C in small aliquots to prevent freeze-thaw cycles.
Precautions	PRKACA Antibody is for research use only and not for use in diagnostic or therapeutic procedures.

Protein Information

Name PRKACA

Synonyms PKACA

Function Phosphorylates a large number of substrates in the cytoplasm and the nucleus (PubMed:[15642694](#), PubMed:[15905176](#), PubMed:[16387847](#), PubMed:[17333334](#), PubMed:[17565987](#), PubMed:[17693412](#), PubMed:[18836454](#), PubMed:[19949837](#), PubMed:[20356841](#), PubMed:[21085490](#), PubMed:[21514275](#), PubMed:[21812984](#), PubMed:[31112131](#)). Phosphorylates CDC25B, ABL1, NFKB1, CLDN3, PSMC5/RPT6, PJA2, RYR2, RORA, SOX9 and VASP (PubMed:[15642694](#), PubMed:[15905176](#), PubMed:[16387847](#), PubMed:[17333334](#), PubMed:[17565987](#), PubMed:[17693412](#), PubMed:[18836454](#), PubMed:[19949837](#), PubMed:[20356841](#), PubMed:[21085490](#), PubMed:[21514275](#), PubMed:[21812984](#)). Regulates the abundance of compartmentalized pools of its regulatory subunits through phosphorylation of PJA2 which binds and ubiquitinates these subunits, leading to their subsequent proteolysis (PubMed:[21423175](#)). RORA is activated by phosphorylation (PubMed:[21514275](#)). Required for glucose- mediated adipogenic differentiation increase and osteogenic differentiation inhibition from osteoblasts (PubMed:[19949837](#)). Involved in chondrogenesis by mediating phosphorylation of SOX9 (By similarity). Involved in the regulation of platelets in response to thrombin and collagen; maintains circulating platelets in a resting state by phosphorylating proteins in numerous platelet inhibitory pathways when in complex with NF-kappa-B (NFKB1 and NFKB2) and I-kappa-B-alpha (NFKBIA), but thrombin and collagen disrupt these complexes and free active PRKACA stimulates platelets and leads to platelet aggregation by phosphorylating VASP (PubMed:[15642694](#), PubMed:[20356841](#)). Prevents the antiproliferative and anti-invasive effects of alpha- difluoromethylornithine in breast cancer cells when activated (PubMed:[17333334](#)). RYR2 channel activity is potentiated by phosphorylation in presence of luminal Ca(2+), leading to reduced amplitude and increased frequency of store overload-induced Ca(2+) release (SOICR) characterized by an increased rate of Ca(2+) release and propagation velocity of spontaneous Ca(2+) waves, despite reduced wave amplitude and resting cytosolic Ca(2+) (PubMed:[17693412](#)). PSMC5/RPT6 activation by phosphorylation stimulates proteasome (PubMed:[17565987](#)). Negatively regulates tight junctions (TJs) in ovarian cancer cells via CLDN3 phosphorylation (PubMed:[15905176](#)). NFKB1 phosphorylation promotes NF-kappa-B p50-p50 DNA binding (PubMed:[15642694](#)). Required for phosphorylation of GLI transcription factors which inhibits them and prevents transcriptional activation of Hedgehog signaling pathway target genes (By similarity). GLI transcription factor phosphorylation is inhibited by interaction of PRKACA with SMO which sequesters PRKACA at the cell membrane (By similarity). Involved in embryonic development by down-regulating the Hedgehog (Hh) signaling pathway that determines embryo pattern formation and morphogenesis most probably through the regulation of OFD1 in ciliogenesis (PubMed:[33934390](#)). Prevents meiosis resumption in prophase-arrested oocytes via CDC25B inactivation by phosphorylation (By similarity). May also regulate rapid eye movement (REM) sleep in the pedunculopontine tegmental (PPT) (By similarity). Phosphorylates APOBEC3G and AICDA (PubMed:[16387847](#), PubMed:[18836454](#)). Phosphorylates HSF1; this phosphorylation promotes HSF1 nuclear localization and transcriptional activity upon heat shock (PubMed:[21085490](#)). Acts as a negative regulator of mTORC1 by mediating phosphorylation of RPTOR (PubMed:[31112131](#)).

Cellular Location Cytoplasm. Cell membrane. Membrane; Lipid-anchor. Nucleus. Mitochondrion {ECO:0000250|UniProtKB:P05132}. Note=Translocates into the

nucleus (monomeric catalytic subunit). The inactive holoenzyme is found in the cytoplasm. Distributed throughout the cytoplasm in meiotically incompetent oocytes. Associated to mitochondrion as meiotic competence is acquired. Aggregates around the germinal vesicles (GV) at the immature GV stage oocytes (By similarity). Colocalizes with HSF1 in nuclear stress bodies (nSBs) upon heat shock (PubMed:21085490) Recruited to the cell membrane through interaction with SMO (By similarity).
{ECO:0000250|UniProtKB:P05132, ECO:0000269|PubMed:21085490}

Tissue Location

Isoform 1 is ubiquitous. Isoform 2 is sperm- specific and is enriched in pachytene spermatocytes but is not detected in round spermatids.

Background

C17orf53 (chromosome 17 open reading frame 53) is a 647 amino acid protein that is encoded by a gene mapping to human chromosome 17. Chromosome 17 makes up over 2.5% of the human genome with about 81 million bases encoding over 1,200 genes. Two key tumor suppressor genes are associated with chromosome 17, namely, p53 and BRCA1. Tumor suppressor p53 is necessary for maintenance of cellular genetic integrity by moderating cell fate through DNA repair versus cell death. Malfunction or loss of p53 expression is associated with malignant cell growth and Li-Fraumeni syndrome. Like p53, BRCA1 is directly involved in DNA repair, specifically it is recognized as a genetic determinant of early onset breast cancer and predisposition to cancers of the ovary, colon, prostate gland and fallopian tubes. Chromosome 17 is also linked to neurofibromatosis, a condition characterized by neural and epidermal lesions, and dysregulated Schwann cell growth. Alexander disease, Birt-Hogg-Dube syndrome and Canavan disease are also associated with chromosome 17. ; ;

References

1. J Struct Biol. 2012 Jun;178(3):300-10.2. BMC Biochem. 2011 Aug 3;12:40.

Images

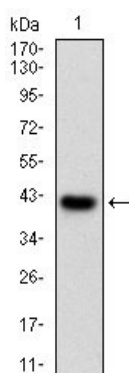


Figure 1: Western blot analysis using PRKACA mAb against human PRKACA (AA: 1-120) recombinant protein. (Expected MW is 39.7 kDa)

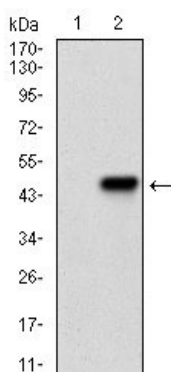


Figure 2: Western blot analysis using PRKACA mAb against HEK293 (1) and PRKACA (AA: 1-120)-hIgGFc transfected HEK293 (2) cell lysate.

Please note: All products are 'FOR RESEARCH USE ONLY. NOT FOR USE IN DIAGNOSTIC OR THERAPEUTIC PROCEDURES'.