

CGA Antibody

Purified Mouse Monoclonal Antibody

Catalog # AO1977a

Product Information

Application	WB, E
Primary Accession	P01215
Reactivity	Human
Host	Mouse
Clonality	Monoclonal
Clone Names	2E6B3
Isotype	IgG1
Calculated MW	13075
Description	The four human glycoprotein hormones chorionic gonadotropin (CG), luteinizing hormone (LH), follicle stimulating hormone (FSH), and thyroid stimulating hormone (TSH) are dimers consisting of alpha and beta subunits that are associated noncovalently. The alpha subunits of these hormones are identical, however, their beta chains are unique and confer biological specificity. The protein encoded by this gene is the alpha subunit and belongs to the glycoprotein hormones alpha chain family. Two transcript variants encoding different isoforms have been found for this gene.
Immunogen	Purified recombinant fragment of human CGA (AA: 25-147) expressed in E. Coli.
Formulation	Purified antibody in PBS with 0.05% sodium azide.

Additional Information

Gene ID	1081
Other Names	Glycoprotein hormones alpha chain, Anterior pituitary glycoprotein hormones common subunit alpha, Choriogonadotropin alpha chain, Chorionic gonadotrophin subunit alpha, CG-alpha, Follicle-stimulating hormone alpha chain, FSH-alpha, Folitropin alpha chain, Luteinizing hormone alpha chain, LSH-alpha, Lutropin alpha chain, Thyroid-stimulating hormone alpha chain, TSH-alpha, Thyrotropin alpha chain, CGA
Dilution	WB~~1/500 - 1/2000 E~~1/10000
Storage	Maintain refrigerated at 2-8°C for up to 6 months. For long term storage store at -20°C in small aliquots to prevent freeze-thaw cycles.
Precautions	CGA Antibody is for research use only and not for use in diagnostic or therapeutic procedures.

Protein Information

Name	CGA
Function	Shared alpha chain of the active heterodimeric glycoprotein hormones thyrotropin/thyroid stimulating hormone/TSH, lutropin/luteinizing hormone/LH, follitropin/follicle stimulating hormone/FSH and choriogonadotropin/CG. These hormones bind specific receptors on target cells that in turn activate downstream signaling pathways.
Cellular Location	Secreted

Background

DNAL4 is a component of the dynein motor complex

References

1. Reprod Biol Endocrinol. 2011 Aug 12;9:114. 2. Hum Reprod. 2006 Mar;21(3):823-8.

Images

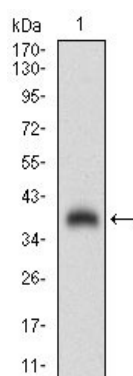


Figure 1: Western blot analysis using CGA mAb against human CGA (AA: 25-147) recombinant protein. (Expected MW is 39.4 kDa)

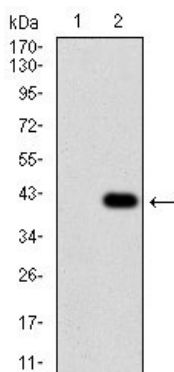


Figure 2: Western blot analysis using CGA mAb against HEK293 (1) and CGA (AA: 25-147)-hIgGfc transfected HEK293 (2) cell lysate.

Please note: All products are 'FOR RESEARCH USE ONLY. NOT FOR USE IN DIAGNOSTIC OR THERAPEUTIC PROCEDURES'.