

# NES Antibody

Purified Mouse Monoclonal Antibody

Catalog # AO2251a

## Product Information

---

<b>Application</b>	WB, FC, E
<b>Primary Accession</b>	<a href="#">P48681</a>
<b>Reactivity</b>	Human
<b>Host</b>	Mouse
<b>Clonality</b>	Monoclonal
<b>Clone Names</b>	1A9G12
<b>Isotype</b>	IgG1
<b>Calculated MW</b>	177439
<b>Description</b>	This gene encodes a member of the intermediate filament protein family and is expressed primarily in nerve cells.
<b>Immunogen</b>	Purified recombinant fragment of human NESTIN (AA: 419-588 ) expressed in E. Coli.
<b>Formulation</b>	Purified antibody in PBS with 0.05% sodium azide

## Additional Information

---

<b>Gene ID</b>	10763
<b>Other Names</b>	Nestin, NES
<b>Dilution</b>	WB~~1/500 - 1/2000 FC~~1/200 - 1/400 E~~1/10000
<b>Storage</b>	Maintain refrigerated at 2-8°C for up to 6 months. For long term storage store at -20°C in small aliquots to prevent freeze-thaw cycles.
<b>Precautions</b>	NES Antibody is for research use only and not for use in diagnostic or therapeutic procedures.

## Protein Information

---

<b>Name</b>	NES
<b>Function</b>	Required for brain and eye development. Promotes the disassembly of phosphorylated vimentin intermediate filaments (IF) during mitosis and may play a role in the trafficking and distribution of IF proteins and other cellular factors to daughter cells during progenitor cell division. Required for survival, renewal and mitogen- stimulated proliferation of neural progenitor cells (By similarity).

## References

---

1.Neoplasma. 2012;59(3):310-5.2.Eur J Histochem. 2011 Nov 14;55(4):e39.

## Images

---

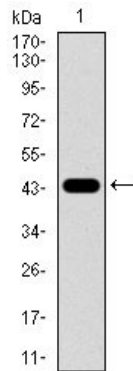


Figure 1: Western blot analysis using NES mAb against human NES recombinant protein. (Expected MW is 44.1 kDa)

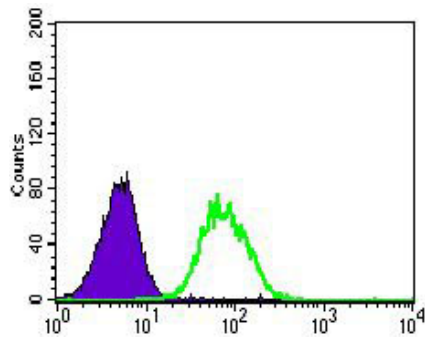


Figure 2: Flow cytometric analysis of HeLa cells using NES mouse mAb (green) and negative control (purple).

Please note: All products are 'FOR RESEARCH USE ONLY. NOT FOR USE IN DIAGNOSTIC OR THERAPEUTIC PROCEDURES'.