

# SLC27A5 Antibody

Purified Mouse Monoclonal Antibody  
Catalog # AO2265a

## Product Information

---

<b>Application</b>	WB, IHC, E
<b>Primary Accession</b>	<a href="#">Q9Y2P5</a>
<b>Reactivity</b>	Human, Mouse
<b>Host</b>	Mouse
<b>Clonality</b>	Monoclonal
<b>Clone Names</b>	9C4D1
<b>Isotype</b>	IgG1
<b>Calculated MW</b>	75385 Da
<b>Description</b>	The protein encoded by this gene is an isozyme of very long-chain acyl-CoA synthetase (VLCS). It is capable of activating very long-chain fatty-acids containing 24- and 26-carbons. It is expressed in liver and associated with endoplasmic reticulum but not with peroxisomes. Its primary role is in fatty acid elongation or complex lipid synthesis rather than in degradation. This gene has a mouse ortholog.
<b>Immunogen</b>	Purified recombinant fragment of human SLC27A5 (AA: 508-570) expressed in E. Coli.
<b>Formulation</b>	Purified antibody in PBS with 0.05% sodium azide

## Additional Information

---

<b>Other Names</b>	Bile acyl-CoA synthetase, BACS, 6.2.1.7, Bile acid-CoA ligase, BA-CoA ligase, BAL, Cholate--CoA ligase, Fatty acid transport protein 5, FATP-5, Fatty-acid-coenzyme A ligase, very long-chain 3, Solute carrier family 27 member 5, Very long-chain acyl-CoA synthetase homolog 2, VLCS-H2, VLCSH2, Very long-chain acyl-CoA synthetase-related protein, VLACS-related, VLACSR, SLC27A5, ACSB, ACSVL6, FACVL3, FATP5
<b>Dilution</b>	WB~~1/500 - 1/2000 IHC~~1/200 - 1/1000 E~~1/10000
<b>Storage</b>	Maintain refrigerated at 2-8°C for up to 6 months. For long term storage store at -20°C in small aliquots to prevent freeze-thaw cycles.
<b>Precautions</b>	SLC27A5 Antibody is for research use only and not for use in diagnostic or therapeutic procedures.

## Protein Information

---

## References

1.Horm Metab Res. 2010 Nov;42(12):854-9. 2.Mol Nutr Food Res. 2007 Feb;51(2):185-91.

## Images

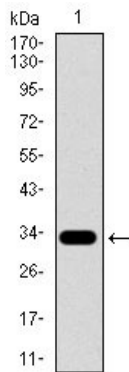


Figure 1: Western blot analysis using SLC27A5 mAb against human SLC27A5 recombinant protein. (Expected MW is 32.9 kDa)

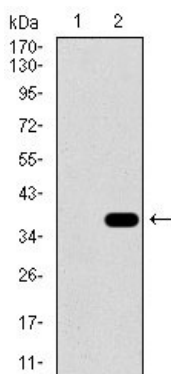


Figure 2: Western blot analysis using SLC27A5 mAb against HEK293 (1) and SLC27A5 (AA: 508-570)-hIgGfc transfected HEK293 (2) cell lysate.

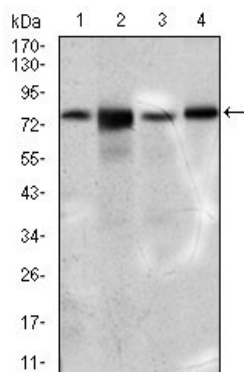


Figure 3: Western blot analysis using SLC27A5 mouse mAb against 3T3L1 (1), HepG2 (2), NIH3T3 (3), and PC-3 (4) cell lysate.

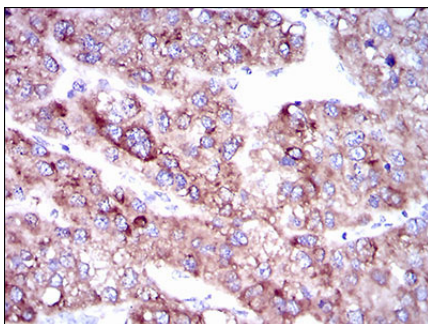
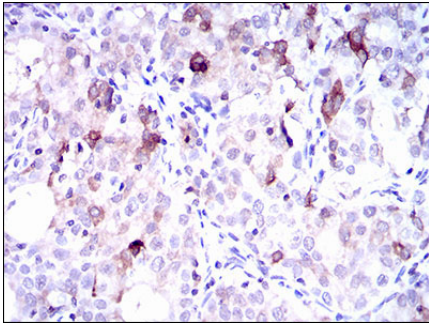


Figure 4: Immunohistochemical analysis of paraffin-embedded liver cancer tissues using SLC27A5 mouse mAb with DAB staining.

Figure 5: Immunohistochemical analysis of paraffin-embedded cervical cancer tissues using SLC27A5 mouse mAb with DAB staining.



Please note: All products are 'FOR RESEARCH USE ONLY. NOT FOR USE IN DIAGNOSTIC OR THERAPEUTIC PROCEDURES'.