

CBX8 Antibody

Purified Mouse Monoclonal Antibody

Catalog # AO2267a

Product Information

| | |
|--------------------------|---|
| Application | WB, FC, E |
| Primary Accession | Q9HC52 |
| Reactivity | Human |
| Host | Mouse |
| Clonality | Monoclonal |
| Clone Names | 9C3D4 |
| Isotype | IgG1 |
| Calculated MW | 43396 |
| Description | Chromobox homolog 8 (CBX8), a Polycomb Group protein that interacts with MLL-AF9 and TIP60, plays an essential role in MLL-AF9 transcriptional regulation and leukemogenesis. CBX8, which is part of one of the PRC1 complexes, regulates proliferation of diploid human and mouse fibroblasts through direct binding to the INK4A-ARF locus. |
| Immunogen | Purified recombinant fragment of human CBX8 (AA: 17-222) expressed in E. Coli. |
| Formulation | Purified antibody in PBS with 0.05% sodium azide |

Additional Information

| | |
|--------------------|--|
| Gene ID | 57332 |
| Other Names | Chromobox protein homolog 8, Polycomb 3 homolog, Pc3, hPc3, Rectachrome 1, CBX8, PC3, RC1 |
| Dilution | WB~~1/500 - 1/2000 FC~~1/200 - 1/400 E~~1/10000 |
| Storage | Maintain refrigerated at 2-8°C for up to 6 months. For long term storage store at -20°C in small aliquots to prevent freeze-thaw cycles. |
| Precautions | CBX8 Antibody is for research use only and not for use in diagnostic or therapeutic procedures. |

Protein Information

| | |
|-----------------|----------|
| Name | CBX8 |
| Synonyms | PC3, RC1 |

Function

Component of a Polycomb group (PcG) multiprotein PRC1-like complex, a complex class required to maintain the transcriptionally repressive state of many genes, including Hox genes, throughout development. PcG PRC1 complex acts via chromatin remodeling and modification of histones; it mediates monoubiquitination of histone H2A 'Lys-119', rendering chromatin heritably changed in its expressibility.

Cellular Location

Nucleus.

References

1.Cancer Cell. 2011 Nov 15;20(5):563-75. 2.EMBO J. 2007 Mar 21;26(6):1637-48.

Images

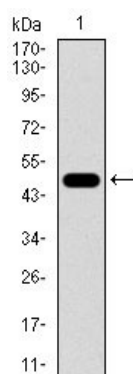


Figure 1: Western blot analysis using CBX8 mAb against human CBX8 recombinant protein. (Expected MW is 49.5 kDa)

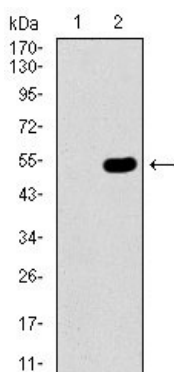


Figure 2: Western blot analysis using CBX8 mAb against HEK293 (1) and CBX8 (AA: 17-222)-hIgGFc transfected HEK293 (2) cell lysate.

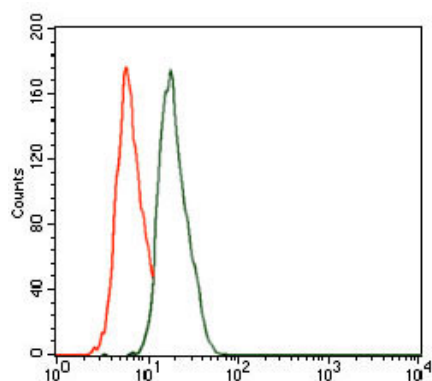


Figure 3: Flow cytometric analysis of HeLa cells using CBX8 mouse mAb (green) and negative control (red).

Please note: All products are 'FOR RESEARCH USE ONLY. NOT FOR USE IN DIAGNOSTIC OR THERAPEUTIC PROCEDURES'.