

# CLGN Antibody

Purified Mouse Monoclonal Antibody

Catalog # AO2299a

## Product Information

---

<b>Application</b>	WB, IHC, ICC, E
<b>Primary Accession</b>	<a href="#">O14967</a>
<b>Reactivity</b>	Human
<b>Host</b>	Mouse
<b>Clonality</b>	Monoclonal
<b>Clone Names</b>	9C8G10
<b>Isotype</b>	IgG1
<b>Calculated MW</b>	70039
<b>Description</b>	Calmegin is a testis-specific endoplasmic reticulum chaperone protein. CLGN may play a role in spermatogenesis and infertility.
<b>Immunogen</b>	Purified recombinant fragment of human CLGN (AA: 249-405) expressed in E. Coli.
<b>Formulation</b>	Purified antibody in PBS with 0.05% sodium azide

## Additional Information

---

<b>Gene ID</b>	1047
<b>Other Names</b>	Calmegin, CLGN
<b>Dilution</b>	WB~~1/500 - 1/2000 IHC~~1/200 - 1/1000 ICC~~N/A E~~1/10000
<b>Storage</b>	Maintain refrigerated at 2-8°C for up to 6 months. For long term storage store at -20°C in small aliquots to prevent freeze-thaw cycles.
<b>Precautions</b>	CLGN Antibody is for research use only and not for use in diagnostic or therapeutic procedures.

## Protein Information

---

<b>Name</b>	CLGN
<b>Function</b>	Functions during spermatogenesis as a chaperone for a range of client proteins that are important for sperm adhesion onto the egg zona pellucida and for subsequent penetration of the zona pellucida. Required for normal sperm migration from the uterus into the oviduct. Required for normal male fertility. Binds calcium ions (By similarity).

<b>Cellular Location</b>	Endoplasmic reticulum membrane; Single-pass type I membrane protein
<b>Tissue Location</b>	Detected in testis (at protein level). Detected in testis.

## References

1.Arch Histol Cytol. 1999 Aug;62(3):283-93. 2.Dev Biol. 2001 Dec 1;240(1):254-61.

## Images

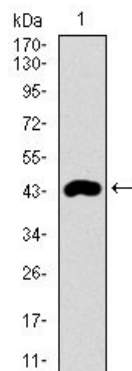


Figure 1: Western blot analysis using CLGN mAb against human CLGN recombinant protein. (Expected MW is 43.5 kDa)

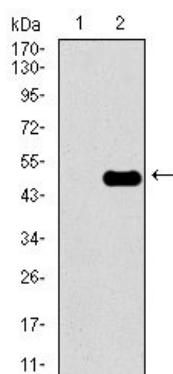


Figure 2: Western blot analysis using CLGN mAb against HEK293 (1) and CLGN (AA: 249-405)-hIgGFc transfected HEK293 (2) cell lysate.

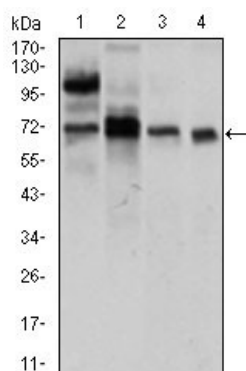


Figure 3: Western blot analysis using CLGN mouse mAb against LNCaP (1), HepG2 (2), PC-3 (3), and Raji (4) cell lysate.

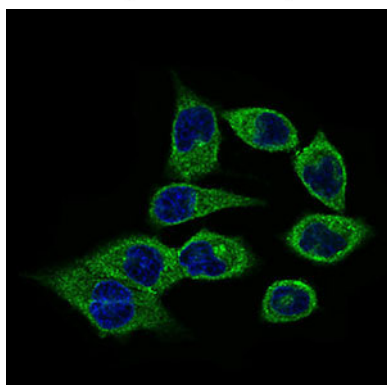


Figure 4: Immunofluorescence analysis of HepG2 cells using CLGN mouse mAb (green). Blue: DRAQ5 fluorescent DNA dye.

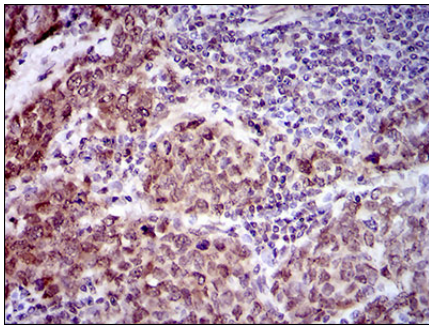


Figure 5: Immunohistochemical analysis of paraffin-embedded breast cancer tissues using CLGN mouse mAb with DAB staining.

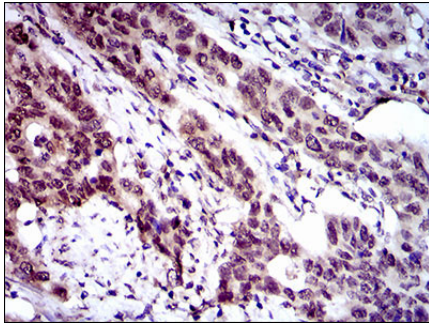


Figure 6: Immunohistochemical analysis of paraffin-embedded esophageal cancer tissues using CLGN mouse mAb with DAB staining.

Please note: All products are 'FOR RESEARCH USE ONLY. NOT FOR USE IN DIAGNOSTIC OR THERAPEUTIC PROCEDURES'.