

# ALPI Antibody

Purified Mouse Monoclonal Antibody

Catalog # AO2311a

## Product Information

---

<b>Application</b>	WB, FC, E
<b>Primary Accession</b>	<a href="#">P09923</a>
<b>Reactivity</b>	Human
<b>Host</b>	Mouse
<b>Clonality</b>	Monoclonal
<b>Clone Names</b>	3B10E7
<b>Isotype</b>	IgG1
<b>Calculated MW</b>	56812
<b>Description</b>	The protein encoded by this gene belongs to putative adhesion molecule of myelomonocytic-derived cells that mediates sialic-acid dependent binding to cells. Preferentially binds to alpha-2,6-linked sialic acid. The sialic acid recognition site may be masked by cis interactions with sialic acids on the same cell surface. In the immune response, may act as an inhibitory receptor upon ligand induced tyrosine phosphorylation by recruiting cytoplasmic phosphatase(s) via their SH2 domain(s) that block signal transduction through dephosphorylation of signaling molecules. Induces apoptosis in acute myeloid leukemia (in vitro) and CD33 plays potential key roles in the pathogenesis of Alzheimer's disease (AD)
<b>Immunogen</b>	Purified recombinant fragment of human CD33 (AA: 15-237) expressed in E. Coli.
<b>Formulation</b>	Purified antibody in PBS with 0.05% sodium azide

## Additional Information

---

<b>Gene ID</b>	248
<b>Other Names</b>	Intestinal-type alkaline phosphatase, IAP, Intestinal alkaline phosphatase, 3.1.3.1, ALPI
<b>Dilution</b>	WB~~1/500 - 1/2000 FC~~1/200 - 1/400 E~~1/10000
<b>Storage</b>	Maintain refrigerated at 2-8°C for up to 6 months. For long term storage store at -20°C in small aliquots to prevent freeze-thaw cycles.
<b>Precautions</b>	ALPI Antibody is for research use only and not for use in diagnostic or therapeutic procedures.

## Protein Information

---

<b>Name</b>	ALPI
<b>Function</b>	Alkaline phosphatase that can hydrolyze various phosphate compounds.
<b>Cellular Location</b>	Cell membrane {ECO:0000250 UniProtKB:P15693}; Lipid-anchor, GPI-anchor {ECO:0000250 UniProtKB:P15693}

## References

1. MABs. 2011 Jan-Feb;3(1):21-30. 2. Hum Genet. 2012 Jul;131(7):1245-9.

## Images

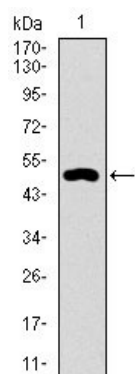


Figure 1: Western blot analysis using CD33 mAb against human CD33 recombinant protein. (Expected MW is 49.2 kDa)

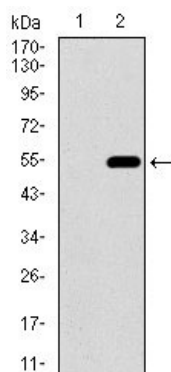


Figure 2: Western blot analysis using CD33 mAb against HEK293 (1) and CD33 (AA: 15-237)-hIgGFc transfected HEK293 (2) cell lysate.

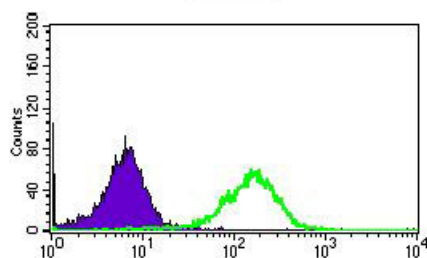


Figure 5: Flow cytometric analysis of HepG2 cells using CD33 mouse mAb (green) and negative control (purple).

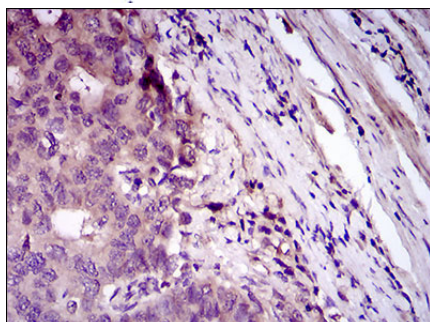
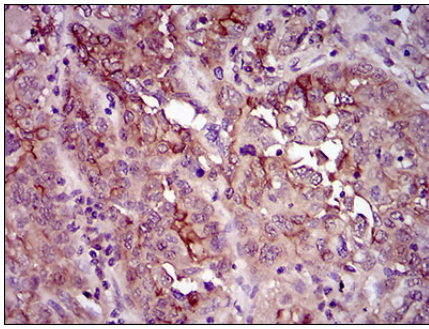


Figure 6: Immunohistochemical analysis of paraffin-embedded esophageal cancer tissues using CD33 mouse mAb with DAB staining.

Figure 7: Immunohistochemical analysis of paraffin-embedded endometrium tissues using CD33 mouse



mAb with DAB staining.

Please note: All products are 'FOR RESEARCH USE ONLY. NOT FOR USE IN DIAGNOSTIC OR THERAPEUTIC PROCEDURES'.