

ALPI Antibody

Purified Mouse Monoclonal Antibody

Catalog # AO2312a

Product Information

Application	WB, FC, E
Primary Accession	P09923
Reactivity	Human
Host	Mouse
Clonality	Monoclonal
Clone Names	3B10E7
Isotype	IgG1
Calculated MW	56812
Description	There are at least four distinct but related alkaline phosphatases: intestinal, placental, placental-like, and liver/bone/kidney (tissue non-specific). The intestinal alkaline phosphatase gene encodes a digestive brush-border enzyme. This enzyme is upregulated during small intestinal epithelial cell differentiation.
Immunogen	Purified recombinant fragment of human ALPI (AA: 397-458) expressed in E. Coli.
Formulation	Ascitic fluid containing 0.03% sodium azide.

Additional Information

Gene ID	248
Other Names	Intestinal-type alkaline phosphatase, IAP, Intestinal alkaline phosphatase, 3.1.3.1, ALPI
Dilution	WB~~1/500 - 1/2000 FC~~1/200 - 1/400 E~~1/10000
Storage	Maintain refrigerated at 2-8°C for up to 6 months. For long term storage store at -20°C in small aliquots to prevent freeze-thaw cycles.
Precautions	ALPI Antibody is for research use only and not for use in diagnostic or therapeutic procedures.

Protein Information

Name	ALPI
Function	Alkaline phosphatase that can hydrolyze various phosphate compounds.

Cellular Location

Cell membrane {ECO:0000250|UniProtKB:P15693}; Lipid-anchor, GPI-anchor {ECO:0000250|UniProtKB:P15693}

References

1. Virchows Arch. 2012 Feb;460(2):157-61. 2. World J Gastroenterol. 2012 Jul 7;18(25):3254-9.

Images

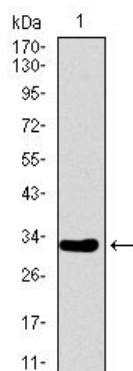


Figure 1: Western blot analysis using ALPI mAb against human ALPI recombinant protein. (Expected MW is 31.9 kDa)

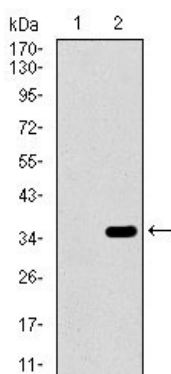


Figure 2: Western blot analysis using ALPI mAb against HEK293 (1) and ALPI (AA: 397-458)-hIgGfc transfected HEK293 (2) cell lysate.

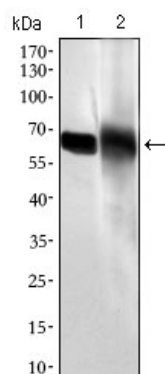


Figure 3: Western blot analysis using ALPI mouse mAb against HL60 (1) and HepG2 (2) cell lysate.

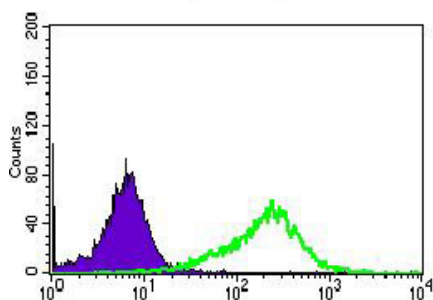


Figure 5: Flow cytometric analysis of HepG2 cells using ALPI mouse mAb (green) and negative control (purple).

Please note: All products are 'FOR RESEARCH USE ONLY. NOT FOR USE IN DIAGNOSTIC OR THERAPEUTIC PROCEDURES'.