

PAX3 Antibody

Purified Mouse Monoclonal Antibody

Catalog # AO2313a

Product Information

Application	WB, E
Primary Accession	P23760
Reactivity	Human, Mouse
Host	Mouse
Clonality	Monoclonal
Clone Names	7D8G7
Isotype	IgG1
Calculated MW	52968
Description	There are at least four distinct but related alkaline phosphatases: intestinal, placental, placental-like, and liver/bone/kidney (tissue non-specific). The intestinal alkaline phosphatase gene encodes a digestive brush-border enzyme. This enzyme is upregulated during small intestinal epithelial cell differentiation.
Immunogen	Purified recombinant fragment of human ALPI (AA: 397-458) expressed in E. Coli.
Formulation	Purified antibody in PBS with 0.05% sodium azide

Additional Information

Gene ID	5077
Other Names	Paired box protein Pax-3, HuP2, PAX3, HUP2
Dilution	WB~~1/500 - 1/2000 E~~1/10000
Storage	Maintain refrigerated at 2-8°C for up to 6 months. For long term storage store at -20°C in small aliquots to prevent freeze-thaw cycles.
Precautions	PAX3 Antibody is for research use only and not for use in diagnostic or therapeutic procedures.

Protein Information

Name	PAX3
Synonyms	HUP2
Function	Transcription factor that may regulate cell proliferation, migration and

apoptosis. Involved in neural development and myogenesis. Transcriptional activator of MITF, acting synergistically with SOX10 (PubMed:[21965087](#)).

Cellular Location

Nucleus.

References

1. Virchows Arch. 2012 Feb;460(2):157-61. 2. World J Gastroenterol. 2012 Jul 7;18(25):3254-9.

Images

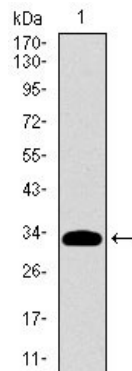


Figure 1: Western blot analysis using ALPI mAb against human ALPI recombinant protein. (Expected MW is 31.9 kDa)

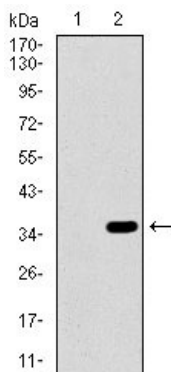


Figure 2: Western blot analysis using ALPI mAb against HEK293 (1) and ALPI (AA: 397-458)-hIgGfc transfected HEK293 (2) cell lysate.

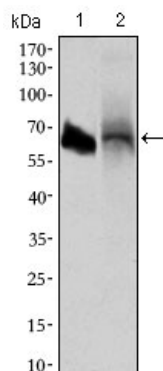


Figure 3: Western blot analysis using ALPI mouse mAb against HL60 (1) and HepG2 (2) cell lysate.

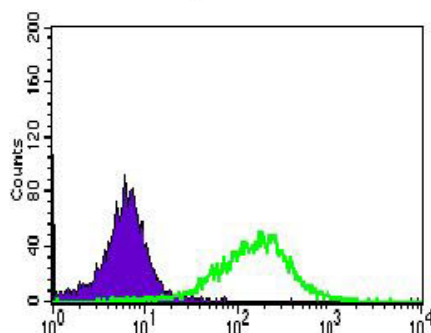


Figure 5: Flow cytometric analysis of HepG2 cells using ALPI mouse mAb (green) and negative control (purple).

Please note: All products are 'FOR RESEARCH USE ONLY. NOT FOR USE IN DIAGNOSTIC OR THERAPEUTIC PROCEDURES'.