

# Mouse Monoclonal Antibody to LGALS1

Purified Mouse Monoclonal Antibody

Catalog # AO2356a

## Product Information

---

<b>Application</b>	WB, IHC, FC, E
<b>Primary Accession</b>	<a href="#">P09382</a>
<b>Reactivity</b>	Human
<b>Host</b>	Mouse
<b>Clonality</b>	Monoclonal
<b>Clone Names</b>	1H11C5
<b>Isotype</b>	Mouse IgG1
<b>Calculated MW</b>	14716
<b>Description</b>	The galectins are a family of beta-galactoside-binding proteins implicated in modulating cell-cell and cell-matrix interactions. This gene product may act as an autocrine negative growth factor that regulates cell proliferation.;
<b>Immunogen</b>	Purified recombinant fragment of human LGALS1 (AA: 1-135) expressed in E. Coli.
<b>Formulation</b>	Purified antibody in PBS with 0.05% sodium azide
<b>Application Note</b>	ELISA: 1/10000; WB: 1/500 - 1/2000; IHC: 1/200 - 1/1000; FCM: 1/200 - 1/400

## Additional Information

---

<b>Gene ID</b>	3956
<b>Other Names</b>	GBP; GAL1
<b>Dilution</b>	WB~~1:1000 IHC~~1:100~500 FC~~1:10~50 E~~N/A
<b>Storage</b>	Maintain refrigerated at 2-8°C for up to 6 months. For long term storage store at -20°C in small aliquots to prevent freeze-thaw cycles.
<b>Precautions</b>	Mouse Monoclonal Antibody to LGALS1 is for research use only and not for use in diagnostic or therapeutic procedures.

## Protein Information

---

<b>Name</b>	LGALS1 ( <a href="#">HGNC:6561</a> )
<b>Function</b>	Lectin that binds beta-galactoside and a wide array of complex carbohydrates. Plays a role in regulating apoptosis, cell proliferation and cell differentiation. Inhibits CD45 protein phosphatase activity and therefore the

dephosphorylation of Lyn kinase. Strong inducer of T-cell apoptosis. Plays a negative role in Th17 cell differentiation via activation of the receptor CD69 (PubMed:[24752896](#)).

## Cellular Location

Secreted, extracellular space, extracellular matrix. Cytoplasm. Secreted  
Note=Can be secreted; the secretion is dependent on protein unfolding and facilitated by the cargo receptor TMED10; it results in protein translocation from the cytoplasm into the ERGIC (endoplasmic reticulum- Golgi intermediate compartment) followed by vesicle entry and secretion.

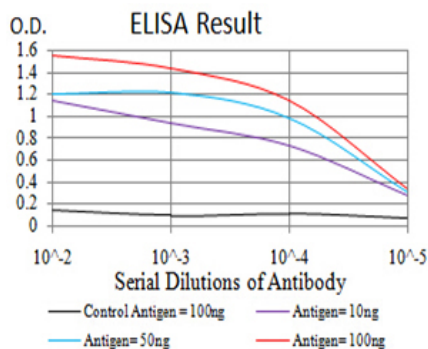
## Tissue Location

Expressed in placenta, maternal decidua and fetal membranes. Within placenta, expressed in trophoblasts, stromal cells, villous endothelium, syncytiotrophoblast apical membrane and villous stroma. Within fetal membranes, expressed in amnion, chorioamniotic mesenchyma and chorion (at protein level). Expressed in cardiac, smooth, and skeletal muscle, neurons, thymus, kidney and hematopoietic cells.

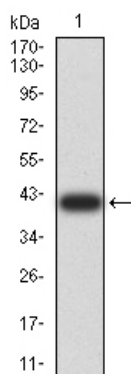
## References

1.Cancer Sci. 2014 Nov;105(11):1402-10. ; 2.Lung Cancer. 2014 Apr;84(1):73-8. ;

## Images

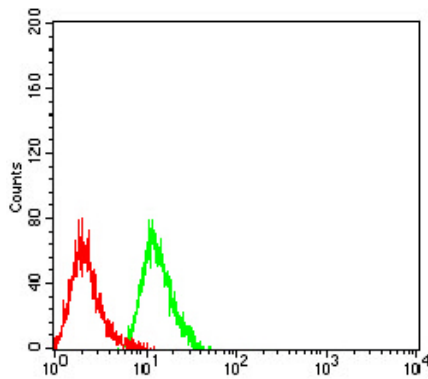
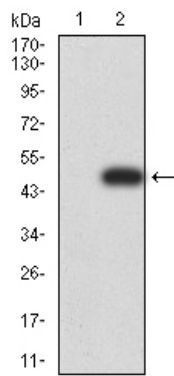


Black line: Control Antigen (100 ng);Purple line: Antigen (10ng); Blue line: Antigen (50 ng); Red line:Antigen (100 ng)

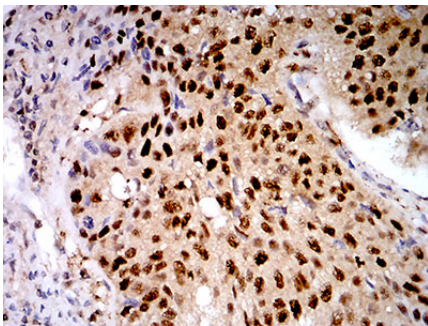


Western blot analysis using LGALS1 mAb against human LGALS1 (AA: 1-135) recombinant protein. (Expected MW is 40.7 kDa)

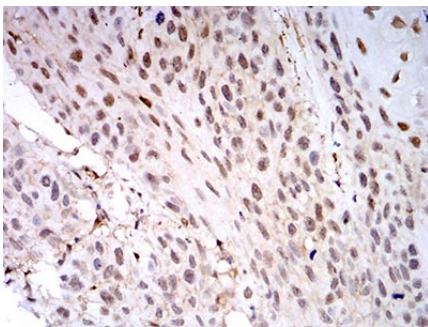
Western blot analysis using LGALS1 mAb against HEK293 (1) and LGALS1 (AA: 1-135)-hIgGfc transfected HEK293 (2) cell lysate.



Flow cytometric analysis of Hela cells using LGALS1 mouse mAb (green) and negative control (red).



Immunohistochemical analysis of paraffin-embedded lung cancer tissues using LGALS1 mouse mAb with DAB staining.



Immunohistochemical analysis of paraffin-embedded esophageal cancer tissues using LGALS1 mouse mAb with DAB staining.

Please note: All products are 'FOR RESEARCH USE ONLY. NOT FOR USE IN DIAGNOSTIC OR THERAPEUTIC PROCEDURES'.