

Mouse Monoclonal Antibody to CD2

Purified Mouse Monoclonal Antibody

Catalog # AO2361a

Product Information

Application	WB, IHC, FC, E
Primary Accession	P06729
Reactivity	Mouse
Host	Mouse
Clonality	Monoclonal
Clone Names	3D1E3
Isotype	Mouse IgG1
Calculated MW	39448
Description	CD2 is a surface antigen of the human T-lymphocyte lineage that is expressed on all peripheral blood T cells (summarized by Sewell et al., 1986 [PubMed 3490670]). It is one of the earliest T-cell markers, being present on more than 95% of thymocytes; it is also found on some natural killer cells but not on B lymphocytes. Monoclonal antibodies directed against CD2 inhibit the formation of rosettes with sheep erythrocytes, indicating that CD2 is the erythrocyte receptor or is closely associated with it.;
Immunogen	Purified recombinant fragment of human CD2 (AA: 25-140) expressed in E. Coli.
Formulation	Purified antibody in PBS with 0.05% sodium azide
Application Note	ELISA: 1/10000; WB: 1/500 - 1/2000; IHC: 1/200 - 1/1000; FCM: 1/200 - 1/400

Additional Information

Gene ID	914
Other Names	T11; SRBC; LFA-2
Dilution	WB~~1:1000 IHC~~1:100~500 FC~~1:10~50 E~~N/A
Storage	Maintain refrigerated at 2-8°C for up to 6 months. For long term storage store at -20°C in small aliquots to prevent freeze-thaw cycles.
Precautions	Mouse Monoclonal Antibody to CD2 is for research use only and not for use in diagnostic or therapeutic procedures.

Protein Information

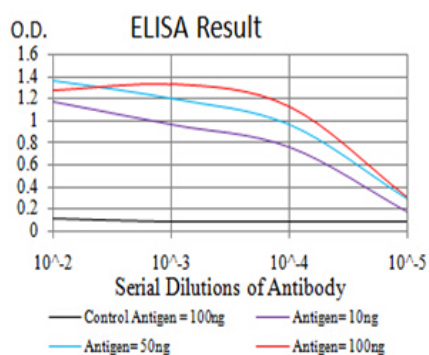
Name	CD2
-------------	-----

Synonyms	SRBC
Function	CD2 interacts with lymphocyte function-associated antigen CD58 (LFA-3) and CD48/BCM1 to mediate adhesion between T-cells and other cell types. CD2 is implicated in the triggering of T-cells, the cytoplasmic domain is implicated in the signaling function.
Cellular Location	Cell membrane; Single-pass type I membrane protein
Tissue Location	Expressed in natural killer cells (at protein level).

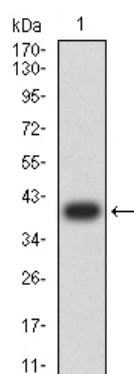
References

1.J Virol. 2013 Aug;87(16):9148-58. ; 2.PLoS One. 2012;7(10):e47664.;

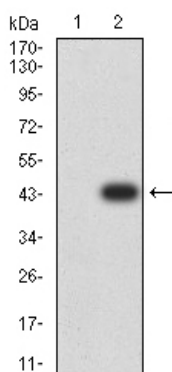
Images



Black line: Control Antigen (100 ng);Purple line: Antigen (10ng); Blue line: Antigen (50 ng); Red line:Antigen (100 ng)

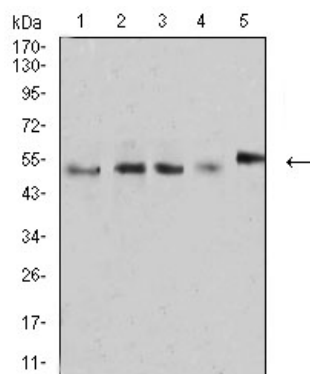


Western blot analysis using CD2 mAb against human CD2 (AA: 25-140) recombinant protein. (Expected MW is 39.2 kDa)

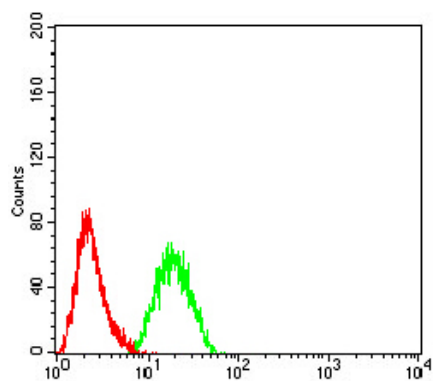


Western blot analysis using CD2 mAb against HEK293 (1) and CD2 (AA: 25-140)-hIgGFc transfected HEK293 (2) cell lysate.

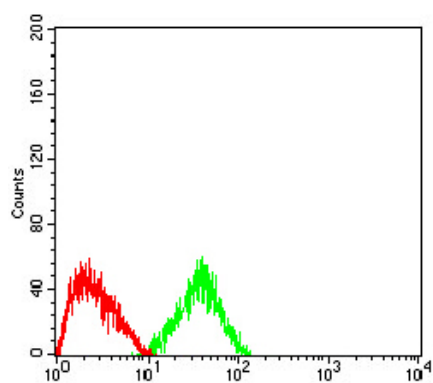
Western blot analysis using CD2 mouse mAb against MOLT4 (1), MCF-7 (2), L1210 (3), U937 (4), and NIH3T3 (5)



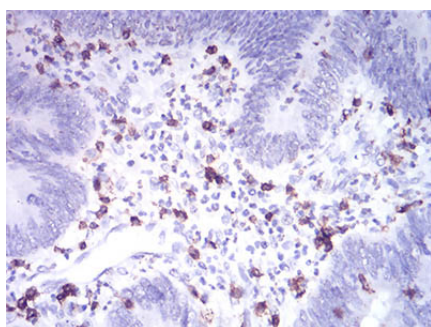
cell lysate.



Flow cytometric analysis of Hela cells using CD2 mouse mAb (green) and negative control (red).



Flow cytometric analysis of HepG2 cells using CD2 mouse mAb (green) and negative control (red).



Immunohistochemical analysis of paraffin-embedded rectum cancer tissues using CD2 mouse mAb with DAB staining.

Please note: All products are 'FOR RESEARCH USE ONLY. NOT FOR USE IN DIAGNOSTIC OR THERAPEUTIC PROCEDURES'.