

Mouse Monoclonal Antibody to DAPP1

Purified Mouse Monoclonal Antibody

Catalog # AO2369a

Product Information

Application	WB, FC, E
Primary Accession	Q9UN19
Reactivity	Human
Host	Mouse
Clonality	Monoclonal
Clone Names	2F7A9
Isotype	Mouse IgG1
Calculated MW	32194
Description	DAPP1 (Dual Adaptor Of Phosphotyrosine And 3-Phosphoinositides) is a Protein Coding gene. Among its related pathways are Immune System and Downstream signaling events of B Cell Receptor (BCR). GO annotations related to this gene include phospholipid binding and phosphatidylinositol-3,4-bisphosphate binding.;
Immunogen	Purified recombinant fragment of human DAPP1 (AA: 127-276) expressed in E. Coli.
Formulation	Purified antibody in PBS with 0.05% sodium azide
Application Note	ELISA: 1/10000; WB: 1/500 - 1/2000; FCM: 1/200 - 1/400

Additional Information

Gene ID	27071
Other Names	BAM32
Dilution	WB~~1:1000 FC~~1:10~50 E~~N/A
Storage	Maintain refrigerated at 2-8°C for up to 6 months. For long term storage store at -20°C in small aliquots to prevent freeze-thaw cycles.
Precautions	Mouse Monoclonal Antibody to DAPP1 is for research use only and not for use in diagnostic or therapeutic procedures.

Protein Information

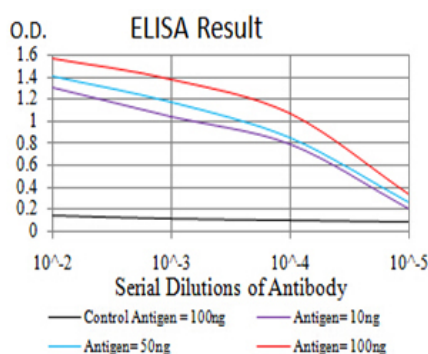
Name	DAPP1
Synonyms	BAM32

Function	May act as a B-cell-associated adapter that regulates B-cell antigen receptor (BCR)-signaling downstream of PI3K.
Cellular Location	Cytoplasm. Membrane; Peripheral membrane protein. Note=Membrane-associated after cell stimulation leading to its translocation
Tissue Location	Highly expressed in placenta and lung, followed by brain, heart, kidney, liver, pancreas and skeletal muscle. Expressed by B-lymphocytes, but not T-lymphocytes or nonhematopoietic cells

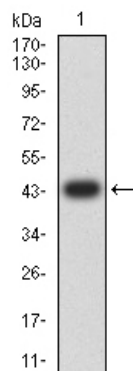
References

1.J Immunol. 2011 Oct 15;187(8):3972-8. ; 2.J Immunol. 2004 Nov 1;173(9):5601-9.;

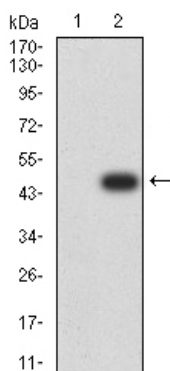
Images



Black line: Control Antigen (100 ng);Purple line: Antigen (10ng); Blue line: Antigen (50 ng); Red line:Antigen (100 ng)

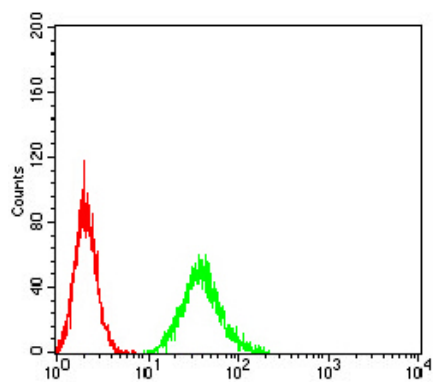


Western blot analysis using DAPP1 mAb against human DAPP1 (AA: 127-276) recombinant protein. (Expected MW is 43.5 kDa)



Western blot analysis using DAPP1 mAb against HEK293 (1) and DAPP1 (AA: 127-276)-hIgGFc transfected HEK293 (2) cell lysate.

Flow cytometric analysis of A549 cells using DAPP1 mouse mAb (green) and negative control (red).



Please note: All products are 'FOR RESEARCH USE ONLY. NOT FOR USE IN DIAGNOSTIC OR THERAPEUTIC PROCEDURES'.