

Mouse Monoclonal Antibody to SUZ12

Purified Mouse Monoclonal Antibody

Catalog # AO2380a

Product Information

Application	WB, FC, E
Primary Accession	Q15022
Reactivity	Human
Host	Mouse
Clonality	Monoclonal
Clone Names	2B9G12
Isotype	Mouse IgG1
Calculated MW	83055
Description	This zinc finger gene has been identified at the breakpoints of a recurrent chromosomal translocation reported in endometrial stromal sarcoma. Recombination of these breakpoints results in the fusion of this gene and JAZF1. The protein encoded by this gene contains a zinc finger domain in the C terminus of the coding region.;
Immunogen	Purified recombinant fragment of human SUZ12 (AA: 1-139) expressed in E. Coli.
Formulation	Purified antibody in PBS with 0.05% sodium azide
Application Note	ELISA: 1/10000; WB: 1/500 - 1/2000; FCM: 1/200 - 1/400

Additional Information

Gene ID	23512
Other Names	CHET9; JJA1
Dilution	WB~~1:1000 FC~~1:10~50 E~~N/A
Storage	Maintain refrigerated at 2-8°C for up to 6 months. For long term storage store at -20°C in small aliquots to prevent freeze-thaw cycles.
Precautions	Mouse Monoclonal Antibody to SUZ12 is for research use only and not for use in diagnostic or therapeutic procedures.

Protein Information

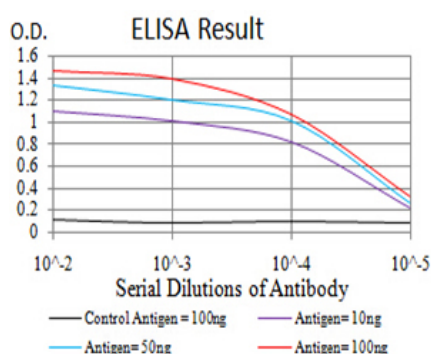
Name	SUZ12
Synonyms	CHET9, JJA1, KIAA0160

Function	<p>Polycomb group (PcG) protein. Component of the PRC2 complex, which methylates 'Lys-9' (H3K9me) and 'Lys-27' (H3K27me) of histone H3, leading to transcriptional repression of the affected target gene (PubMed:15225548, PubMed:15231737, PubMed:15385962, PubMed:16618801, PubMed:17344414, PubMed:18285464, PubMed:28229514, PubMed:29499137, PubMed:31959557). The PRC2 complex may also serve as a recruiting platform for DNA methyltransferases, thereby linking two epigenetic repression systems (PubMed:12351676, PubMed:12435631, PubMed:15099518, PubMed:15225548, PubMed:15385962, PubMed:15684044, PubMed:16431907, PubMed:18086877, PubMed:18285464). Genes repressed by the PRC2 complex include HOXC8, HOXA9, MYT1 and CDKN2A (PubMed:15231737, PubMed:16618801, PubMed:17200670, PubMed:31959557).</p>
Cellular Location	Nucleus Note=Localizes to chromatin as part of the PRC2 complex
Tissue Location	Overexpressed in breast and colon cancer.

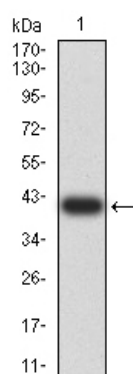
References

1.Tumour Biol. 2014 Jun;35(6):6073-82. ; 2.Cell Physiol Biochem. 2013;31(6):778-84.;

Images

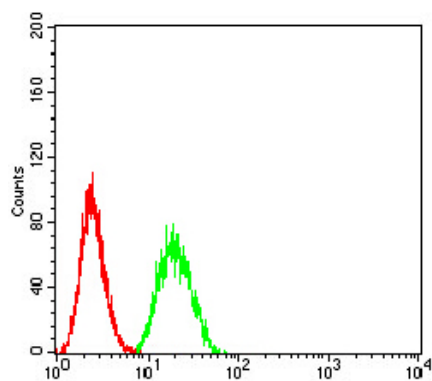
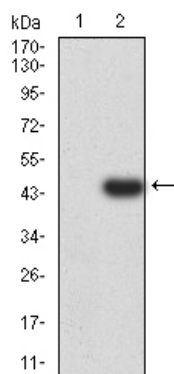


Black line: Control Antigen (100 ng);Purple line: Antigen (10ng); Blue line: Antigen (50 ng); Red line:Antigen (100 ng)



Western blot analysis using SUZ12 mAb against human SUZ12 (AA: 1-139) recombinant protein. (Expected MW is 39.9 kDa)

Western blot analysis using SUZ12 mAb against HEK293 (1) and SUZ12 (AA: 1-139)-hIgGFc transfected HEK293 (2) cell lysate.



Flow cytometric analysis of HeLa cells using SUZ12 mouse mAb (green) and negative control (red).

Please note: All products are 'FOR RESEARCH USE ONLY. NOT FOR USE IN DIAGNOSTIC OR THERAPEUTIC PROCEDURES'.