

Mouse Monoclonal Antibody to C3C

Purified Mouse Monoclonal Antibody
Catalog # AO2388a

Product Information

| | |
|--------------------------|--|
| Application | WB, IHC, E |
| Primary Accession | P01024 |
| Reactivity | Human |
| Host | Mouse |
| Clonality | Monoclonal |
| Clone Names | 8B5H2 |
| Isotype | Mouse IgG1 |
| Calculated MW | 187148 |
| Description | Complement component C3 plays a central role in the activation of complement system. Its activation is required for both classical and alternative complement activation pathways. The encoded preproprotein is proteolytically processed to generate alpha and beta subunits that form the mature protein, which is then further processed to generate numerous peptide products. The C3a peptide, also known as the C3a anaphylatoxin, modulates inflammation and possesses antimicrobial activity. Mutations in this gene are associated with atypical hemolytic uremic syndrome and age-related macular degeneration in human patients.; |
| Immunogen | Purified recombinant fragment of human C3C (AA: 1521-1649) expressed in E. Coli. |
| Formulation | Purified antibody in PBS with 0.05% sodium azide |
| Application Note | ELISA: 1/10000; WB: 1/500 - 1/2000; IHC: 1/200 - 1/1000; |

Additional Information

| | |
|--------------------|--|
| Gene ID | 718 |
| Other Names | ASP; C3a; C3b; AHUS5; ARMD9; CPAMD1; HEL-S-62p |
| Dilution | WB~~1:1000 IHC~~1:100~500 E~~N/A |
| Storage | Maintain refrigerated at 2-8°C for up to 6 months. For long term storage store at -20°C in small aliquots to prevent freeze-thaw cycles. |
| Precautions | Mouse Monoclonal Antibody to C3C is for research use only and not for use in diagnostic or therapeutic procedures. |

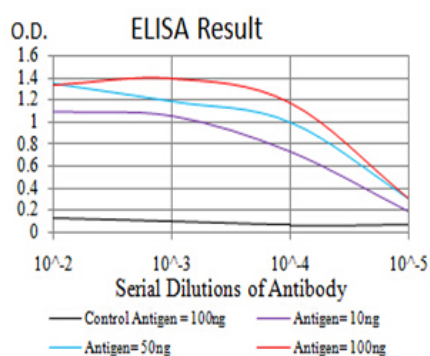
Protein Information

| | |
|--------------------------|---|
| Name | C3 {ECO:0000303 PubMed:2579379, ECO:0000312 HGNC:HGNC:1318} |
| Function | Precursor of non-enzymatic components of the classical, alternative, lectin and GZMK complement pathways, which consist in a cascade of proteins that leads to phagocytosis and breakdown of pathogens and signaling that strengthens the adaptive immune system. |
| Cellular Location | Secreted. [C3a anaphylatoxin]: Secreted |
| Tissue Location | Plasma.. |

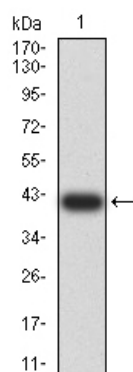
References

1.Blood. 2015 Apr 9;125(15):2359-69. ; 2.Mediators Inflamm. 2013;2013:716902.;

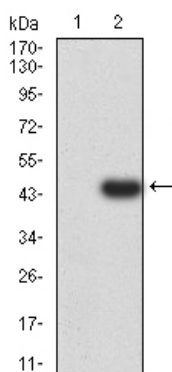
Images



Black line: Control Antigen (100 ng);Purple line: Antigen (10ng); Blue line: Antigen (50 ng); Red line:Antigen (100 ng)

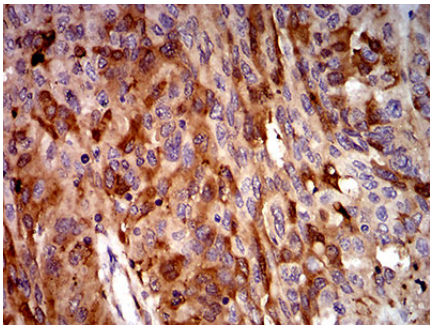


Western blot analysis using C3C mAb against human C3C (AA: 1521-1649) recombinant protein. (Expected MW is 40.7 kDa)

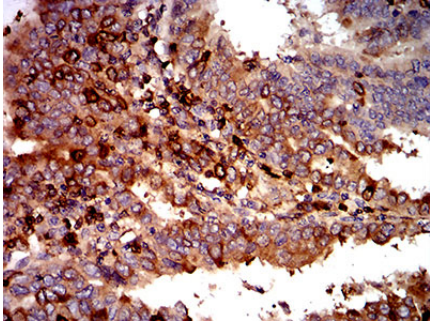


Western blot analysis using C3C mAb against HEK293 (1) and C3C (AA: 1521-1649)-hIgGfc transfected HEK293 (2) cell lysate.

Immunohistochemical analysis of paraffin-embedded ovarian cancer tissues using C3C mouse mAb with DAB



staining.



Immunohistochemical analysis of paraffin-embedded endometrial cancer tissues using C3C mouse mAb with DAB staining.

Please note: All products are 'FOR RESEARCH USE ONLY. NOT FOR USE IN DIAGNOSTIC OR THERAPEUTIC PROCEDURES'.