

Mouse Monoclonal Antibody to C3C

Purified Mouse Monoclonal Antibody

Catalog # AO2389a

Product Information

Application	WB, IHC, FC, ICC, E
Primary Accession	P01024
Reactivity	Human
Host	Mouse
Clonality	Monoclonal
Clone Names	4C6A8
Isotype	Mouse IgG1
Calculated MW	187148
Description	Complement component C3 plays a central role in the activation of complement system. Its activation is required for both classical and alternative complement activation pathways. The encoded preproprotein is proteolytically processed to generate alpha and beta subunits that form the mature protein, which is then further processed to generate numerous peptide products. The C3a peptide, also known as the C3a anaphylatoxin, modulates inflammation and possesses antimicrobial activity. Mutations in this gene are associated with atypical hemolytic uremic syndrome and age-related macular degeneration in human patients.;
Immunogen	Purified recombinant fragment of human C3C (AA: 1521-1649) expressed in E. Coli.
Formulation	Purified antibody in PBS with 0.05% sodium azide
Application Note	ELISA: 1/10000; WB: 1/500 - 1/2000; IHC: 1/200 - 1/1000; ICC: 1/200 - 1/1000; FCM: 1/200 - 1/400

Additional Information

Gene ID	718
Other Names	ASP; C3a; C3b; AHUS5; ARMD9; CPAMD1; HEL-S-62p
Dilution	WB~~1:1000 IHC~~1:100~500 FC~~1:10~50 ICC~~N/A E~~N/A
Storage	Maintain refrigerated at 2-8°C for up to 6 months. For long term storage store at -20°C in small aliquots to prevent freeze-thaw cycles.
Precautions	Mouse Monoclonal Antibody to C3C is for research use only and not for use in diagnostic or therapeutic procedures.

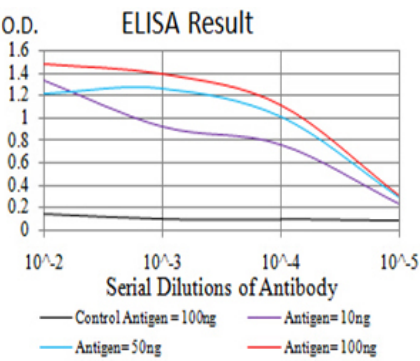
Protein Information

Name	C3 {ECO:0000303 PubMed:2579379, ECO:0000312 HGNC:HGNC:1318}
Function	Precursor of non-enzymatic components of the classical, alternative, lectin and GZMK complement pathways, which consist in a cascade of proteins that leads to phagocytosis and breakdown of pathogens and signaling that strengthens the adaptive immune system.
Cellular Location	Secreted. [C3a anaphylatoxin]: Secreted
Tissue Location	Plasma..

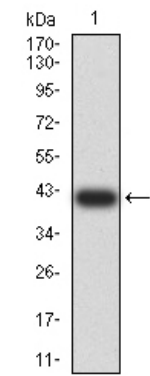
References

1.Blood. 2015 Apr 9;125(15):2359-69. ; 2.Mediators Inflamm. 2013;2013:716902.;

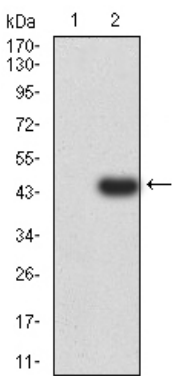
Images



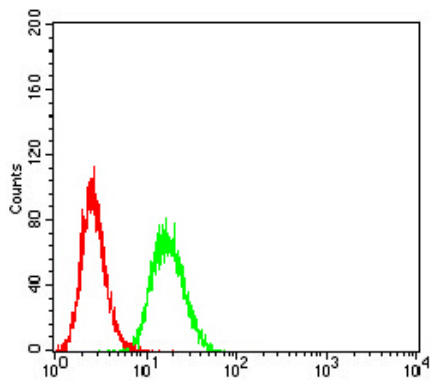
Black line: Control Antigen (100 ng);Purple line: Antigen (10ng); Blue line: Antigen (50 ng); Red line:Antigen (100 ng)



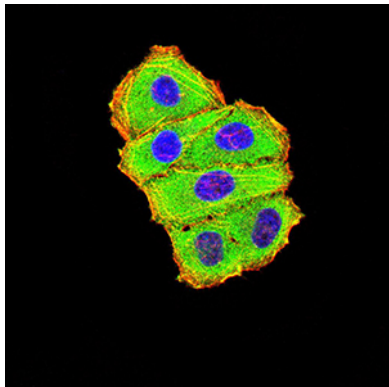
Western blot analysis using C3C mAb against human C3C (AA: 1521-1649) recombinant protein. (Expected MW is 40.7 kDa)



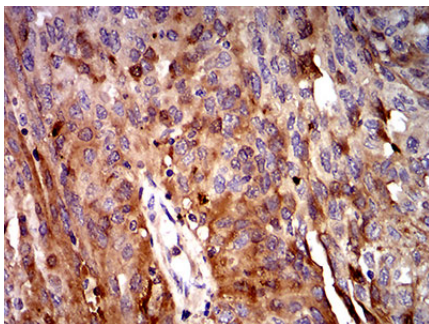
Western blot analysis using C3C mAb against HEK293 (1) and C3C (AA: 1521-1649)-hIgGFc transfected HEK293 (2) cell lysate.



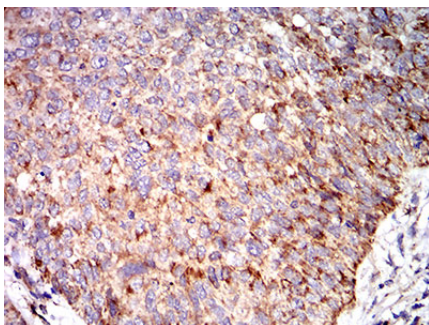
Flow cytometric analysis of HeLa cells using C3C mouse mAb (green) and negative control (red).



Immunofluorescence analysis of HeLa cells using C3C mouse mAb (green). Blue: DRAQ5 fluorescent DNA dye. Red: Actin filaments have been labeled with Alexa Fluor-555 phalloidin. Secondary antibody from Fisher



Immunohistochemical analysis of paraffin-embedded ovarian cancer tissues using C3C mouse mAb with DAB staining.



Immunohistochemical analysis of paraffin-embedded bladder cancer tissues using C3C mouse mAb with DAB staining.

Please note: All products are 'FOR RESEARCH USE ONLY. NOT FOR USE IN DIAGNOSTIC OR THERAPEUTIC PROCEDURES'.