

Mouse Monoclonal Antibody to CD2

Purified Mouse Monoclonal Antibody

Catalog # AO2392a

Product Information

Application	WB, IHC, FC, E
Primary Accession	P06729
Reactivity	Human, Mouse
Host	Mouse
Clonality	Monoclonal
Clone Names	3D1B4
Isotype	Mouse IgG1
Calculated MW	39448
Description	CD2 is a surface antigen of the human T-lymphocyte lineage that is expressed on all peripheral blood T cells (summarized by Sewell et al., 1986 [PubMed 3490670]). It is one of the earliest T-cell markers, being present on more than 95% of thymocytes; it is also found on some natural killer cells but not on B lymphocytes. Monoclonal antibodies directed against CD2 inhibit the formation of rosettes with sheep erythrocytes, indicating that CD2 is the erythrocyte receptor or is closely associated with it.;
Immunogen	Purified recombinant fragment of human CD2 (AA: 25-140) expressed in E. Coli.
Formulation	Purified antibody in PBS with 0.05% sodium azide
Application Note	ELISA: 1/10000; WB: 1/500 - 1/2000; IHC: 1/200 - 1/1000; FCM: 1/200 - 1/400

Additional Information

Gene ID	914
Other Names	T11; SRBC; LFA-2
Dilution	WB~~1:1000 IHC~~1:100~500 FC~~1:10~50 E~~N/A
Storage	Maintain refrigerated at 2-8°C for up to 6 months. For long term storage store at -20°C in small aliquots to prevent freeze-thaw cycles.
Precautions	Mouse Monoclonal Antibody to CD2 is for research use only and not for use in diagnostic or therapeutic procedures.

Protein Information

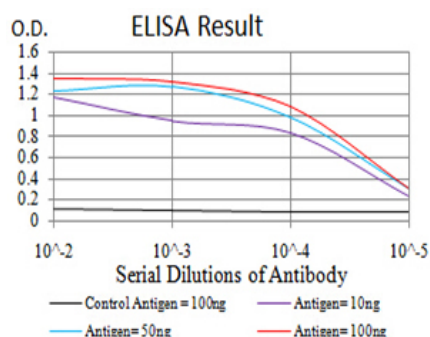
Name	CD2
-------------	-----

Synonyms	SRBC
Function	CD2 interacts with lymphocyte function-associated antigen CD58 (LFA-3) and CD48/BCM1 to mediate adhesion between T-cells and other cell types. CD2 is implicated in the triggering of T-cells, the cytoplasmic domain is implicated in the signaling function.
Cellular Location	Cell membrane; Single-pass type I membrane protein
Tissue Location	Expressed in natural killer cells (at protein level).

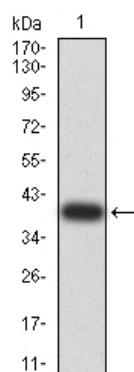
References

1.J Cell Mol Med. 2014 Apr;18(4):600-9. ; 2.J Virol. 2013 Aug;87(16):9148-58. ;

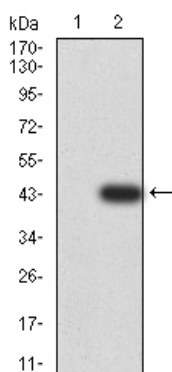
Images



Black line: Control Antigen (100 ng);Purple line: Antigen (10ng); Blue line: Antigen (50 ng); Red line:Antigen (100 ng)

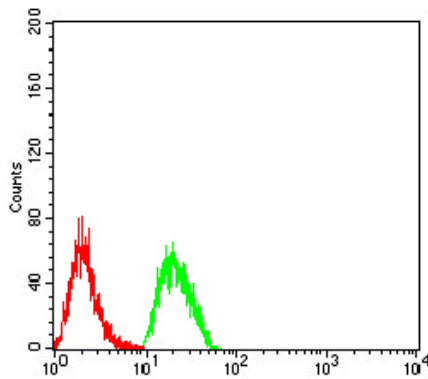
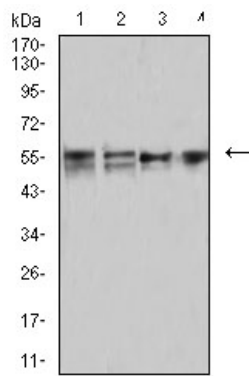


Western blot analysis using CD2 mAb against human CD2 (AA: 25-140) recombinant protein. (Expected MW is 39.2 kDa)

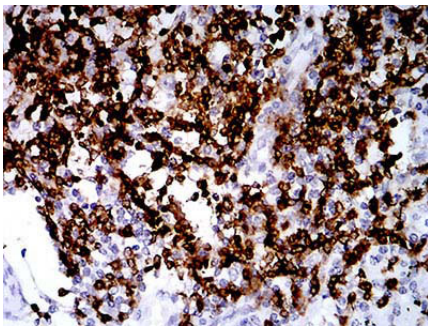


Western blot analysis using CD2 mAb against HEK293 (1) and CD2 (AA: 25-140)-hIgGfc transfected HEK293 (2) cell lysate.

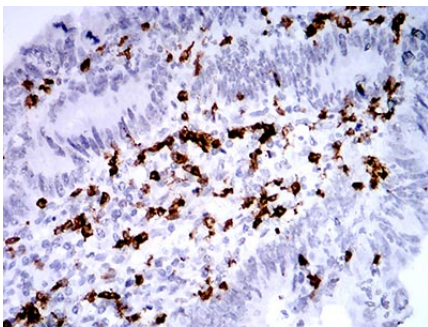
Western blot analysis using CD2 mouse mAb against MOLT4 (1), MCF-7 (2), Hela (3), and L1210 (4) cell lysate.



Flow cytometric analysis of Hela cells using CD2 mouse mAb (green) and negative control (red).



Immunohistochemical analysis of paraffin-embedded lung cancer tissues using CD2 mouse mAb with DAB staining.



Immunohistochemical analysis of paraffin-embedded rectum cancer tissues using CD2 mouse mAb with DAB staining.

Please note: All products are 'FOR RESEARCH USE ONLY. NOT FOR USE IN DIAGNOSTIC OR THERAPEUTIC PROCEDURES'.