

Mouse Monoclonal Antibody to KLF2

Purified Mouse Monoclonal Antibody

Catalog # AO2396a

Product Information

Application	WB, E
Primary Accession	Q9Y5W3
Reactivity	Human, Mouse
Host	Mouse
Clonality	Monoclonal
Clone Names	2F12A11
Isotype	Mouse IgG1
Calculated MW	37420
Description	Kruppel-like factors (KLFs) are a family of broadly expressed zinc finger transcription factors. KLF2 regulates T-cell trafficking by promoting expression of the lipid-binding receptor S1P1 (S1PR1; MIM 601974) and the selectin CD62L (SELL; MIM 153240) (summary by Weinreich et al., 2009 [PubMed 19592277]).;
Immunogen	Purified recombinant fragment of human KLF2 (AA: 251-355) expressed in E. Coli.
Formulation	Purified antibody in PBS with 0.05% sodium azide
Application Note	ELISA: 1/10000; WB: 1/500 - 1/2000;

Additional Information

Gene ID	10365
Other Names	LKLF
Dilution	WB~~1:1000 E~~N/A
Storage	Maintain refrigerated at 2-8°C for up to 6 months. For long term storage store at -20°C in small aliquots to prevent freeze-thaw cycles.
Precautions	Mouse Monoclonal Antibody to KLF2 is for research use only and not for use in diagnostic or therapeutic procedures.

Protein Information

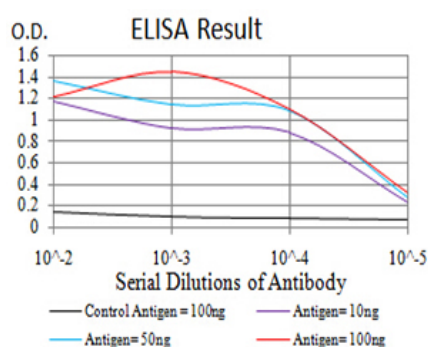
Name	KLF2
Synonyms	LKLF

Function	Transcription factor that binds to the CACCC box in the promoter of target genes such as HBB/beta globin or NOV and activates their transcription (PubMed: 21063504). Might be involved in transcriptional regulation by modulating the binding of the RARA nuclear receptor to RARE DNA elements (PubMed: 28167758).
Cellular Location	Nucleus.

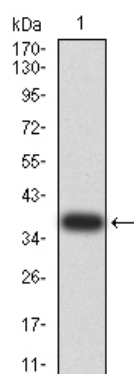
References

1.Tumour Biol. 2015 Apr;36(4):3075-84. ; 2.Cell Physiol Biochem. 2013;32(4):931-41.;

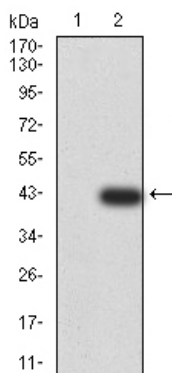
Images



Black line: Control Antigen (100 ng);Purple line: Antigen (10ng); Blue line: Antigen (50 ng); Red line:Antigen (100 ng)

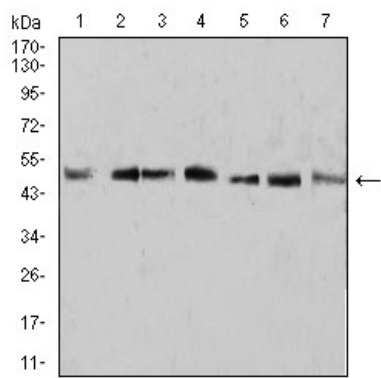


Western blot analysis using KLF2 mAb against human KLF2 (AA: 251-355) recombinant protein. (Expected MW is 38.4 kDa)



Western blot analysis using KLF2 mAb against HEK293 (1) and KLF2 (AA: 251-355)-hIgGFc transfected HEK293 (2) cell lysate.

Western blot analysis using KLF2 mouse mAb against A431 (1), U937 (2), NIH/3T3 (3), Raw264.7 (4), SPC-A-1 (5), SK-MES-1 (6), and MOLT4 (7) cell lysate.



Please note: All products are 'FOR RESEARCH USE ONLY. NOT FOR USE IN DIAGNOSTIC OR THERAPEUTIC PROCEDURES'.