

Mouse Monoclonal Antibody to RBFOX3

Purified Mouse Monoclonal Antibody

Catalog # AO2414a

Product Information

Application	WB, FC, ICC, E
Primary Accession	A6NFN3
Reactivity	Human, Mouse
Host	Mouse
Clonality	Monoclonal
Clone Names	1H3B2
Isotype	Mouse IgG2a
Calculated MW	33873
Description	RBFOX3 (RNA Binding Protein, Fox-1 Homolog (C. Elegans) 3) is a Protein Coding gene. Diseases associated with RBFOX3 include vertebral artery occlusion and tuberculum sellae meningioma. Among its related pathways are Neuroscience. GO annotations related to this gene include nucleic acid binding and nucleotide binding. An important paralog of this gene is RBFOX1.;
Immunogen	Purified recombinant fragment of human RBFOX3 (AA: 1-140) expressed in E. Coli.
Formulation	Purified antibody in PBS with 0.05% sodium azide
Application Note	ELISA: 1/10000; WB: 1/500 - 1/2000; ICC: 1/200 - 1/1000; FCM: 1/200 - 1/400

Additional Information

Gene ID	146713
Other Names	FOX3; NEUN; FOX-3; HRNBP3
Dilution	WB~~1:1000 FC~~1:10~50 ICC~~N/A E~~N/A
Storage	Maintain refrigerated at 2-8°C for up to 6 months. For long term storage store at -20°C in small aliquots to prevent freeze-thaw cycles.
Precautions	Mouse Monoclonal Antibody to RBFOX3 is for research use only and not for use in diagnostic or therapeutic procedures.

Protein Information

Name	RBFOX3
Function	Pre-mRNA alternative splicing regulator. Regulates alternative splicing of

RBFox2 to enhance the production of mRNA species that are targeted for nonsense-mediated decay (NMD).

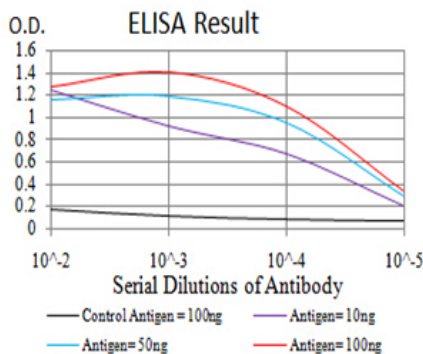
Cellular Location

Nucleus. Cytoplasm. Note=Largely restricted to neuronal nuclei. However, significant cytoplasmic localization in neurons from brains from HIV-infected individuals with cognitive impairment

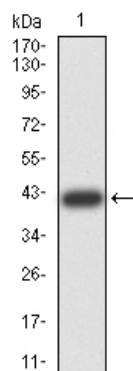
References

1.Neurosci Lett. 2014 Jan 13;558:97-102. ; 2.PLoS One. 2013 Sep 6;8(9):e73323. ;

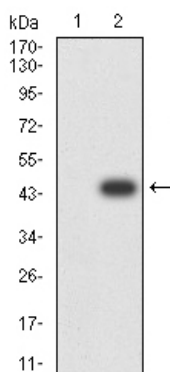
Images



Black line: Control Antigen (100 ng);Purple line: Antigen (10ng); Blue line: Antigen (50 ng); Red line:Antigen (100 ng)

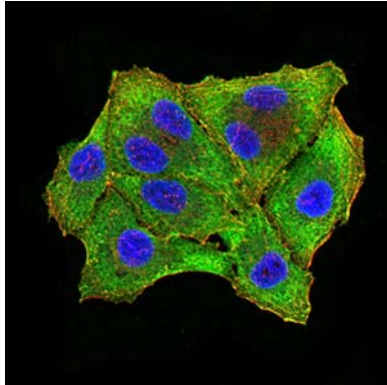
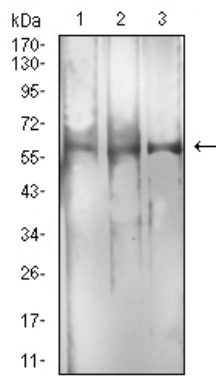


Western blot analysis using RBFox3 mAb against human RBFox3 (AA: 1-140) recombinant protein. (Expected MW is 41.4 kDa)

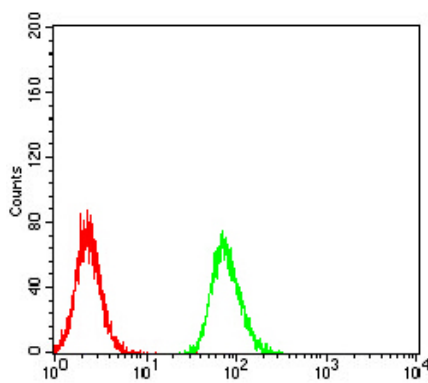


Western blot analysis using RBFox3 mAb against HEK293 (1) and RBFox3 (AA: 1-140)-hIgGFc transfected HEK293 (2) cell lysate.

Western blot analysis using RBFox3 mouse mAb against C2C12 (1), RAW264.7 (2), and U251 (3) cell lysate.



Immunofluorescence analysis of HeLa cells using RBFOX3 mouse mAb (green). Blue: DRAQ5 fluorescent DNA dye. Red: Actin filaments have been labeled with Alexa Fluor-555 phalloidin. Secondary antibody from Fisher



Flow cytometric analysis of HeLa cells using RBFOX3 mouse mAb (green) and negative control (red).

Please note: All products are 'FOR RESEARCH USE ONLY. NOT FOR USE IN DIAGNOSTIC OR THERAPEUTIC PROCEDURES'.