

# Mouse Monoclonal Antibody to ESRRA

Purified Mouse Monoclonal Antibody

Catalog # AO2422a

## Product Information

---

<b>Application</b>	WB, FC, E
<b>Primary Accession</b>	<a href="#">P11474</a>
<b>Reactivity</b>	Human
<b>Host</b>	Mouse
<b>Clonality</b>	Monoclonal
<b>Clone Names</b>	1A6E11
<b>Isotype</b>	Mouse IgG1
<b>Calculated MW</b>	45510
<b>Description</b>	The protein encoded by this gene is a nuclear receptor that is closely related to the estrogen receptor. This protein acts as a site-specific transcription regulator and has been also shown to interact with estrogen and the transcription factor TFIIB by direct protein-protein contact. The binding and regulatory activities of this protein have been demonstrated in the regulation of a variety of genes including lactoferrin, osteopontin, medium-chain acyl coenzyme A dehydrogenase (MCAD) and thyroid hormone receptor genes. A processed pseudogene of ESRRA is located on chromosome 13q12.1. Alternatively spliced transcript variants have been found for this gene.;
<b>Immunogen</b>	Purified recombinant fragment of human ESRRA (AA: 198-376) expressed in E. Coli.
<b>Formulation</b>	Purified antibody in PBS with 0.05% sodium azide
<b>Application Note</b>	ELISA: 1/10000; WB: 1/500 - 1/2000; FCM: 1/200 - 1/400

## Additional Information

---

<b>Gene ID</b>	2101
<b>Other Names</b>	ERR1; ERRa; ESRL1; NR3B1; ERRalpha
<b>Dilution</b>	WB~~1:1000 FC~~1:10~50 E~~N/A
<b>Storage</b>	Maintain refrigerated at 2-8°C for up to 6 months. For long term storage store at -20°C in small aliquots to prevent freeze-thaw cycles.
<b>Precautions</b>	Mouse Monoclonal Antibody to ESRRA is for research use only and not for use in diagnostic or therapeutic procedures.

## Protein Information

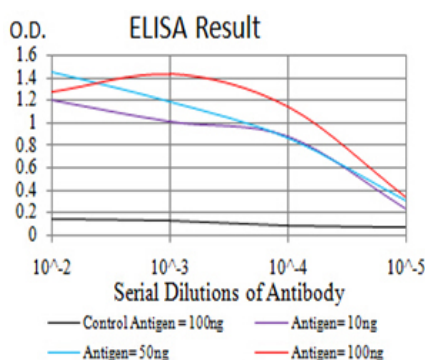
---

<b>Name</b>	ESRRA
<b>Synonyms</b>	ERR1, ESRL1, NR3B1
<b>Function</b>	Binds to an ERR-alpha response element (ERRE) containing a single consensus half-site, 5'-TNAAGGTCA-3'. Can bind to the medium- chain acyl coenzyme A dehydrogenase (MCAD) response element NRRE-1 and may act as an important regulator of MCAD promoter. Binds to the C1 region of the lactoferrin gene promoter. Requires dimerization and the coactivator, PGC-1A, for full activity. The ERRalpha/PGC1alpha complex is a regulator of energy metabolism. Induces the expression of PERM1 in the skeletal muscle.
<b>Cellular Location</b>	Nucleus {ECO:0000255   PROSITE-ProRule:PRU00407, ECO:0000269   PubMed:18063693, ECO:0000269   PubMed:21190936}. Cytoplasm. Note=Co-localizes to the cytoplasm only in presence of MAPK15.

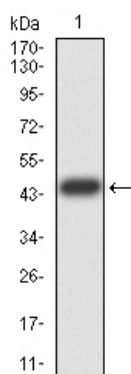
## References

1.J Huazhong Univ Sci Technolog Med Sci. 2014 Dec;34(6):875-81. ; 2.Mol Ther. 2014 Apr;22(4):743-51. ;

## Images

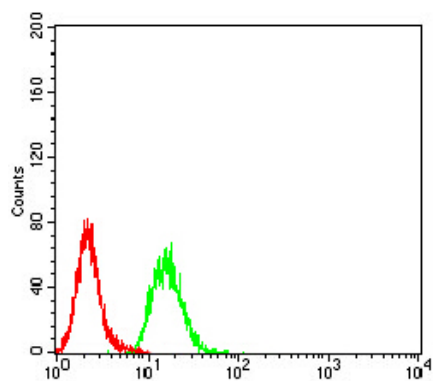
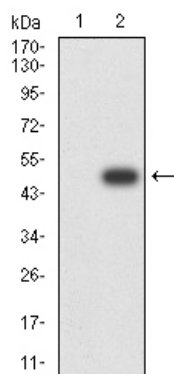


Black line: Control Antigen (100 ng);Purple line: Antigen (10ng); Blue line: Antigen (50 ng); Red line:Antigen (100 ng)



Western blot analysis using ESRRA mAb against human ESRRA (AA: 198-376) recombinant protein. (Expected MW is 45.3 kDa)

Western blot analysis using ESRRA mAb against HEK293 (1) and ESRRA (AA: 198-376)-hIgGfc transfected HEK293 (2) cell lysate.



Flow cytometric analysis of HeLa cells using ESRRA mouse mAb (green) and negative control (red).

Please note: All products are 'FOR RESEARCH USE ONLY. NOT FOR USE IN DIAGNOSTIC OR THERAPEUTIC PROCEDURES'.