

Mouse Monoclonal Antibody to HLA-B

Purified Mouse Monoclonal Antibody
Catalog # AO2443a

Product Information

Application	WB, IHC, FC, ICC, E
Primary Accession	P01889
Reactivity	Human
Host	Mouse
Clonality	Monoclonal
Clone Names	2G7B10
Isotype	Mouse IgG1
Calculated MW	40460 Da
Description	HLA-B belongs to the HLA class I heavy chain paralogues. This class I molecule is a heterodimer consisting of a heavy chain and a light chain (beta-2 microglobulin). The heavy chain is anchored in the membrane. Class I molecules play a central role in the immune system by presenting peptides derived from the endoplasmic reticulum lumen. They are expressed in nearly all cells. The heavy chain is approximately 45 kDa and its gene contains 8 exons. Exon 1 encodes the leader peptide, exon 2 and 3 encode the alpha1 and alpha2 domains, which both bind the peptide, exon 4 encodes the alpha3 domain, exon 5 encodes the transmembrane region and exons 6 and 7 encode the cytoplasmic tail. Polymorphisms within exon 2 and exon 3 are responsible for the peptide binding specificity of each class one molecule. Typing for these polymorphisms is routinely done for bone marrow and kidney transplantation. Hundreds of HLA-B alleles have been described.;
Immunogen	Purified recombinant fragment of human HLA-B (AA: 241-362) expressed in E. Coli.
Formulation	Purified antibody in PBS with 0.05% sodium azide
Application Note	ELISA: 1/10000; WB: 1/500 - 1/2000; IHC: 1/200 - 1/1000; ICC: 1/200 - 1/1000; FCM: 1/200 - 1/400

Additional Information

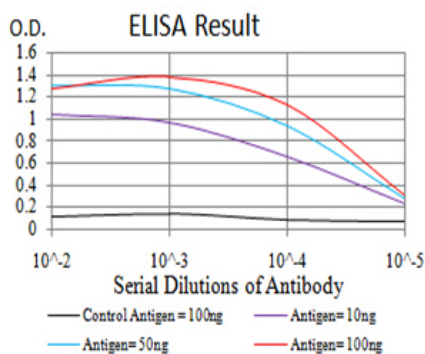
Other Names	AS; HLAB; Bw-47; Bw-50; SPDA1; B-4901; B-5001; HLA-Cw;
Dilution	WB~~1:1000 IHC~~1:100~500 FC~~1:10~50 ICC~~N/A E~~N/A
Storage	Maintain refrigerated at 2-8°C for up to 6 months. For long term storage store at -20°C in small aliquots to prevent freeze-thaw cycles.
Precautions	Mouse Monoclonal Antibody to HLA-B is for research use only and not for use in diagnostic or therapeutic procedures.

Protein Information

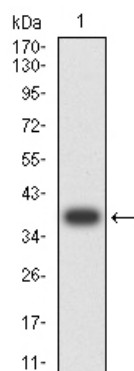
References

1. Pharmacogenomics J. 2015 Oct;15(5):467-72. ; 2. J Immunol. 2014 Jun 1;192(11):4967-76.;

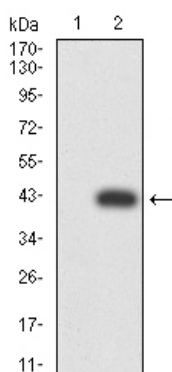
Images



Black line: Control Antigen (100 ng); Purple line: Antigen (10ng); Blue line: Antigen (50 ng); Red line: Antigen (100 ng)

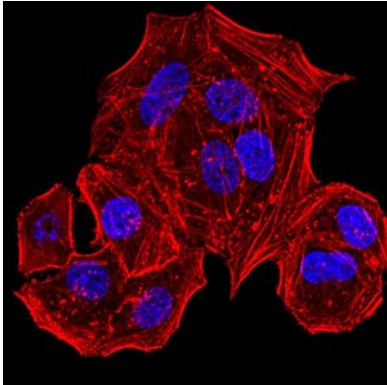
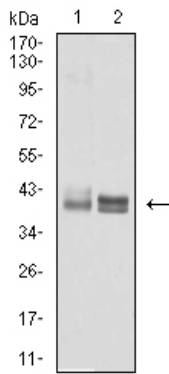


Western blot analysis using HLA-B mAb against human HLA-B (AA: 241-362) recombinant protein. (Expected MW is 38.4 kDa)

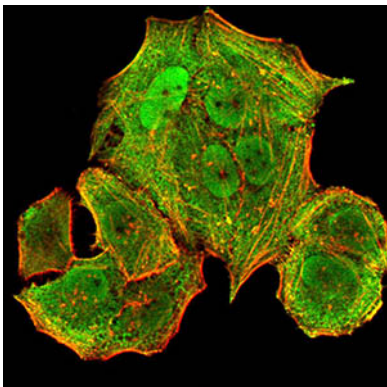


Western blot analysis using HLA-B mAb against HEK293 (1) and HLA-B (AA: 241-362)-hIgGFc transfected HEK293 (2) cell lysate.

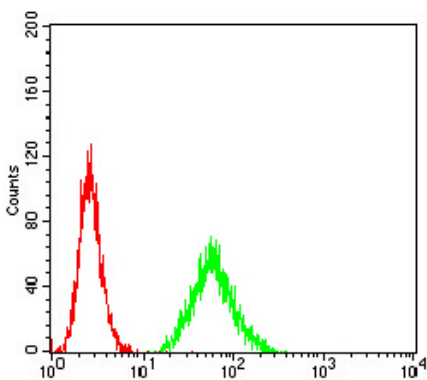
Western blot analysis using HLA-B mouse mAb against Ramos (1) and A431 (2) cell lysate.



Immunofluorescence analysis of HeLa cells using HLA-B mouse mAb. Blue: DRAQ5 fluorescent DNA dye. Red: Actin filaments have been labeled with Alexa Fluor-555 phalloidin.



Immunofluorescence analysis of HeLa cells using HLA-B mouse mAb (green). Blue: DRAQ5 fluorescent DNA dye. Red: Actin filaments have been labeled with Alexa Fluor-555 phalloidin. Secondary antibody from Fisher



Flow cytometric analysis of MCF-7 cells using HLA-B mouse mAb (green) and negative control (red).

Please note: All products are 'FOR RESEARCH USE ONLY. NOT FOR USE IN DIAGNOSTIC OR THERAPEUTIC PROCEDURES'.