

Mouse Monoclonal Antibody to RALB

Purified Mouse Monoclonal Antibody

Catalog # AO2448a

Product Information

Application	WB, FC, E
Primary Accession	P11234
Reactivity	Human
Host	Mouse
Clonality	Monoclonal
Clone Names	8A8A9
Isotype	Mouse IgG2a
Calculated MW	23409
Description	This gene encodes a GTP-binding protein that belongs to the small GTPase superfamily and Ras family of proteins. GTP-binding proteins mediate the transmembrane signaling initiated by the occupancy of certain cell surface receptors.;
Immunogen	Purified recombinant fragment of human RALB (AA: 89-206) expressed in E. Coli.
Formulation	Purified antibody in PBS with 0.05% sodium azide
Application Note	ELISA: 1/10000; WB: 1/500 - 1/2000; FCM: 1/200 - 1/400

Additional Information

Gene ID	5899
Other Names	Ras-related protein Ral-B, 3.6.5.2, RALB
Dilution	WB~~1:1000 FC~~1:10~50 E~~N/A
Storage	Maintain refrigerated at 2-8°C for up to 6 months. For long term storage store at -20°C in small aliquots to prevent freeze-thaw cycles.
Precautions	Mouse Monoclonal Antibody to RALB is for research use only and not for use in diagnostic or therapeutic procedures.

Protein Information

Name	RALB
Function	Multifunctional GTPase involved in a variety of cellular processes including gene expression, cell migration, cell proliferation, oncogenic transformation

and membrane trafficking (PubMed:[10393179](#), PubMed:[17875936](#), PubMed:[18756269](#)). Accomplishes its multiple functions by interacting with distinct downstream effectors. Acts as a GTP sensor for GTP-dependent exocytosis of dense core vesicles (By similarity). Required both to stabilize the assembly of the exocyst complex and to localize functional exocyst complexes to the leading edge of migrating cells (By similarity). Required for suppression of apoptosis (PubMed:[17875936](#)). In late stages of cytokinesis, upon completion of the bridge formation between dividing cells, mediates exocyst recruitment to the midbody to drive abscission (PubMed:[18756269](#)). Involved in ligand-dependent receptor mediated endocytosis of the EGF and insulin receptors (PubMed:[10393179](#)).

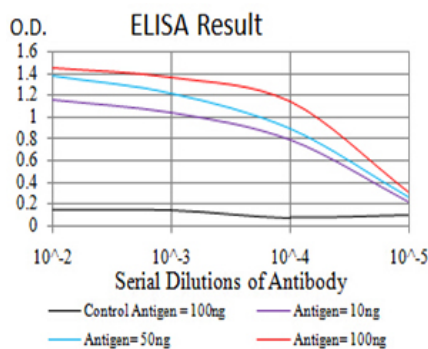
Cellular Location

Cell membrane; Lipid-anchor; Cytoplasmic side. Midbody Note=During late cytokinesis, enriched at the midbody

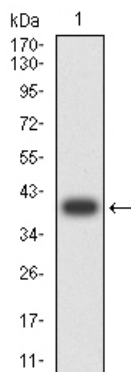
References

1.Clin Transl Oncol. 2015 Jun;17(6):477-85. ; 2.Cancer Res. 2010 Nov 1;70(21):8760-9.;

Images

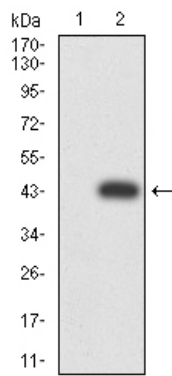


Black line: Control Antigen (100 ng);Purple line: Antigen (10ng); Blue line: Antigen (50 ng); Red line:Antigen (100 ng)

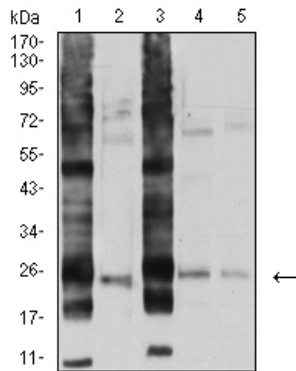


Western blot analysis using RALB mAb against human RALB (AA: 89-206) recombinant protein. (Expected MW is 39.7 kDa)

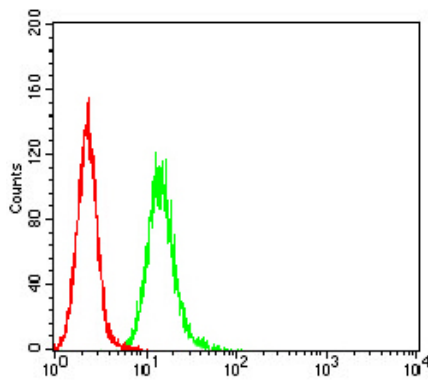
Western blot analysis using RALB mAb against HEK293 (1) and RALB (AA: 89-206)-hIgGfc transfected HEK293 (2) cell lysate.



Western blot analysis using RALB mouse mAb against A549 (1), U251 (2), HT-29 (3), HEK293 (4), and LOVO (5) cell lysate.



Flow cytometric analysis of Hela cells using RALB mouse mAb (green) and negative control (red).



Please note: All products are 'FOR RESEARCH USE ONLY. NOT FOR USE IN DIAGNOSTIC OR THERAPEUTIC PROCEDURES'.