

Mouse Monoclonal Antibody to AFAP1L2

Purified Mouse Monoclonal Antibody
Catalog # AO2450a

Product Information

Application	WB, FC, E
Primary Accession	Q8N4X5
Reactivity	Human
Host	Mouse
Clonality	Monoclonal
Clone Names	2H6D1
Isotype	Mouse IgG1
Calculated MW	91300
Description	AFAP1L2 (Actin Filament Associated Protein 1 Like 2) is a Protein Coding gene. GO annotations related to this gene include SH3 domain binding and protein tyrosine kinase activator activity. An important paralog of this gene is AFAP1.;
Immunogen	Purified recombinant fragment of human AFAP1L2 (AA: 674-818) expressed in E. Coli.
Formulation	Purified antibody in PBS with 0.05% sodium azide
Application Note	ELISA: 1/10000; WB: 1/500 - 1/2000; FCM: 1/200 - 1/400

Additional Information

Gene ID	84632
Other Names	XB130; KIAA1914; CTB-1144G6.4
Dilution	WB~~1:1000 FC~~1:10~50 E~~N/A
Storage	Maintain refrigerated at 2-8°C for up to 6 months. For long term storage store at -20°C in small aliquots to prevent freeze-thaw cycles.
Precautions	Mouse Monoclonal Antibody to AFAP1L2 is for research use only and not for use in diagnostic or therapeutic procedures.

Protein Information

Name	AFAP1L2
Synonyms	KIAA1914, XB130
Function	May play a role in a signaling cascade by enhancing the kinase activity of

SRC. Contributes to SRC-regulated transcription activation.

Cellular Location

Cytoplasm.

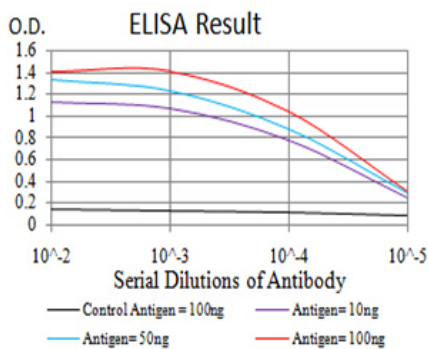
Tissue Location

Detected in spleen and thyroid, and at lower levels in kidney, brain, lung and pancreas.

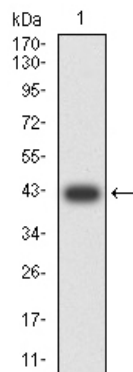
References

1.Int J Clin Exp Pathol. 2015 May 1;8(5):5300-8. ; 2.PLoS One. 2013;8(3):e59057.;

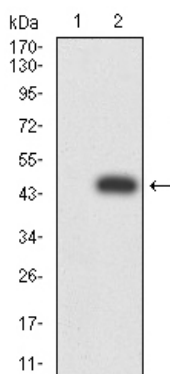
Images



Black line: Control Antigen (100 ng);Purple line: Antigen (10ng); Blue line: Antigen (50 ng); Red line:Antigen (100 ng)

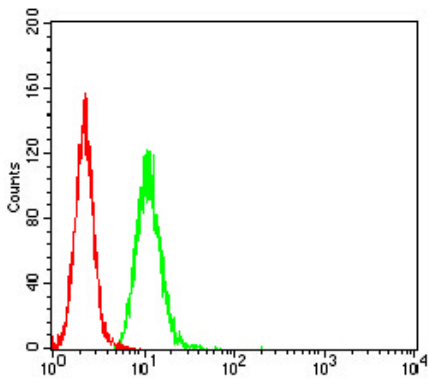
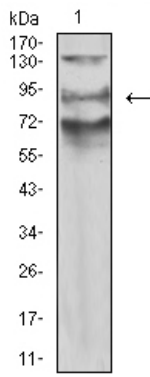


Western blot analysis using AFAP1L2 mAb against human AFAP1L2 (AA: 674-818) recombinant protein. (Expected MW is 42.1 kDa)



Western blot analysis using AFAP1L2 mAb against HEK293 (1) and AFAP1L2 (AA: 674-818)-hIgGfc transfected HEK293 (2) cell lysate.

Western blot analysis using AFAP1L2 mouse mAb against A549 (1) cell lysate.



Flow cytometric analysis of HeLa cells using AFAP1L2 mouse mAb (green) and negative control (red).

Please note: All products are 'FOR RESEARCH USE ONLY. NOT FOR USE IN DIAGNOSTIC OR THERAPEUTIC PROCEDURES'.