

Mouse Monoclonal Antibody to ADRB2

Purified Mouse Monoclonal Antibody

Catalog # AO2464a

Product Information

Application	WB, FC, E
Primary Accession	P07550
Reactivity	Human, Rat
Host	Mouse
Clonality	Monoclonal
Clone Names	5G3B5
Isotype	Mouse IgG1
Calculated MW	46459
Description	This gene encodes beta-2-adrenergic receptor which is a member of the G protein-coupled receptor superfamily. This receptor is directly associated with one of its ultimate effectors, the class C L-type calcium channel Ca(V)1.2. This receptor-channel complex also contains a G protein, an adenylyl cyclase, cAMP-dependent kinase, and the counterbalancing phosphatase, PP2A. The assembly of the signaling complex provides a mechanism that ensures specific and rapid signaling by this G protein-coupled receptor. This gene is intronless. Different polymorphic forms, point mutations, and/or downregulation of this gene are associated with nocturnal asthma, obesity and type 2 diabetes.;
Immunogen	Purified recombinant fragment of human ADRB2 (AA: 302-413) expressed in E. Coli.
Formulation	Purified antibody in PBS with 0.05% sodium azide
Application Note	ELISA: 1/10000; WB: 1/500 - 1/2000; FCM: 1/200 - 1/400

Additional Information

Gene ID	154
Other Names	BAR; B2AR; ADRBR; ADRB2R; BETA2AR
Dilution	WB~~1:1000 FC~~1:10~50 E~~N/A
Storage	Maintain refrigerated at 2-8°C for up to 6 months. For long term storage store at -20°C in small aliquots to prevent freeze-thaw cycles.
Precautions	Mouse Monoclonal Antibody to ADRB2 is for research use only and not for use in diagnostic or therapeutic procedures.

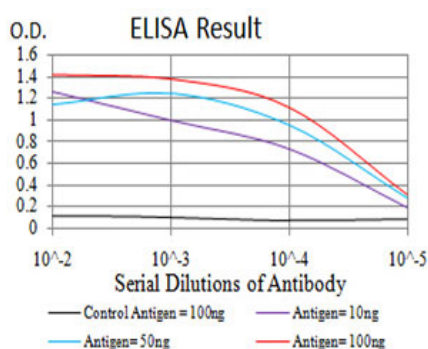
Protein Information

Name	ADRB2
Synonyms	ADRB2R, B2AR
Function	Beta-adrenergic receptors mediate the catecholamine-induced activation of adenylate cyclase through the action of G proteins. The beta-2-adrenergic receptor binds epinephrine with an approximately 30- fold greater affinity than it does norepinephrine.
Cellular Location	Cell membrane; Multi-pass membrane protein. Early endosome. Golgi apparatus. Note=Colocalizes with VHL at the cell membrane (PubMed:19584355). Activated receptors are internalized into endosomes prior to their degradation in lysosomes (PubMed:20559325) Activated receptors are also detected within the Golgi apparatus (PubMed:27481942).

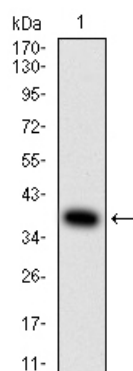
References

1.World J Gastroenterol. 2015 Jun 21;21(23):7191-6. ; 2.Adv Exp Med Biol. 2015;842:247-61.;

Images

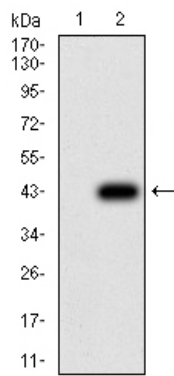


Black line: Control Antigen (100 ng);Purple line: Antigen (10ng); Blue line: Antigen (50 ng); Red line:Antigen (100 ng)

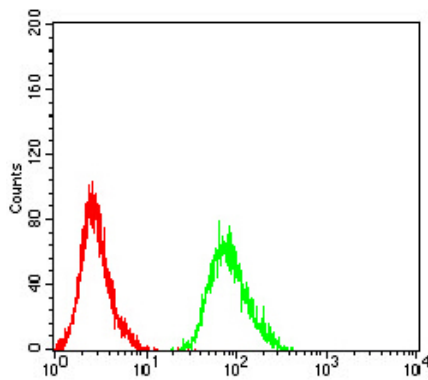
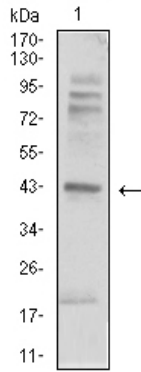


Western blot analysis using ADRB2 mAb against human ADRB2 (AA: 302-413) recombinant protein. (Expected MW is 38.5 kDa)

Western blot analysis using ADRB2 mAb against HEK293 (1) and ADRB2 (AA: 302-413)-hIgGFc transfected HEK293 (2) cell lysate.



Western blot analysis using ADRB2 mouse mAb against C6 (1) cell lysate.



Flow cytometric analysis of MCF-7 cells using ADRB2 mouse mAb (green) and negative control (red).

Please note: All products are 'FOR RESEARCH USE ONLY. NOT FOR USE IN DIAGNOSTIC OR THERAPEUTIC PROCEDURES'.