

# Mouse Monoclonal Antibody to ADRB2

Purified Mouse Monoclonal Antibody

Catalog # AO2465a

## Product Information

---

<b>Application</b>	WB, FC, E
<b>Primary Accession</b>	<a href="#">P07550</a>
<b>Reactivity</b>	Human
<b>Host</b>	Mouse
<b>Clonality</b>	Monoclonal
<b>Clone Names</b>	4A6C9
<b>Isotype</b>	Mouse IgG1
<b>Calculated MW</b>	46459
<b>Description</b>	This gene encodes beta-2-adrenergic receptor which is a member of the G protein-coupled receptor superfamily. This receptor is directly associated with one of its ultimate effectors, the class C L-type calcium channel Ca(V)1.2. This receptor-channel complex also contains a G protein, an adenylyl cyclase, cAMP-dependent kinase, and the counterbalancing phosphatase, PP2A. The assembly of the signaling complex provides a mechanism that ensures specific and rapid signaling by this G protein-coupled receptor. This gene is intronless. Different polymorphic forms, point mutations, and/or downregulation of this gene are associated with nocturnal asthma, obesity and type 2 diabetes.;
<b>Immunogen</b>	Purified recombinant fragment of human ADRB2 (AA: 302-413) expressed in E. Coli.
<b>Formulation</b>	Purified antibody in PBS with 0.05% sodium azide
<b>Application Note</b>	ELISA: 1/10000; WB: 1/500 - 1/2000; FCM: 1/200 - 1/400

## Additional Information

---

<b>Gene ID</b>	154
<b>Other Names</b>	BAR; B2AR; ADRBR; ADRB2R; BETA2AR
<b>Dilution</b>	WB~~1:1000 FC~~1:10~50 E~~N/A
<b>Storage</b>	Maintain refrigerated at 2-8°C for up to 6 months. For long term storage store at -20°C in small aliquots to prevent freeze-thaw cycles.
<b>Precautions</b>	Mouse Monoclonal Antibody to ADRB2 is for research use only and not for use in diagnostic or therapeutic procedures.

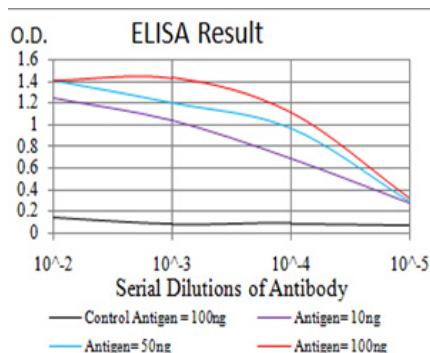
## Protein Information

<b>Name</b>	ADRB2
<b>Synonyms</b>	ADRB2R, B2AR
<b>Function</b>	Beta-adrenergic receptors mediate the catecholamine-induced activation of adenylate cyclase through the action of G proteins. The beta-2-adrenergic receptor binds epinephrine with an approximately 30- fold greater affinity than it does norepinephrine.
<b>Cellular Location</b>	Cell membrane; Multi-pass membrane protein. Early endosome. Golgi apparatus. Note=Colocalizes with VHL at the cell membrane (PubMed:19584355). Activated receptors are internalized into endosomes prior to their degradation in lysosomes (PubMed:20559325) Activated receptors are also detected within the Golgi apparatus (PubMed:27481942).

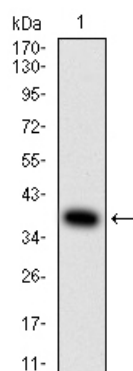
## References

1.World J Gastroenterol. 2015 Jun 21;21(23):7191-6. ; 2.Adv Exp Med Biol. 2015;842:247-61.;

## Images

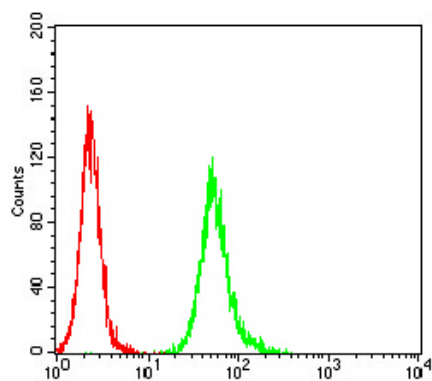
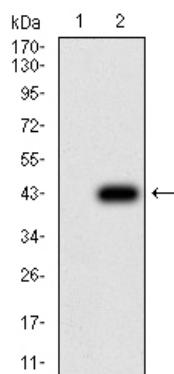


Black line: Control Antigen (100 ng);Purple line: Antigen (10ng); Blue line: Antigen (50 ng); Red line:Antigen (100 ng)



Western blot analysis using ADRB2 mAb against human ADRB2 (AA: 302-413) recombinant protein. (Expected MW is 38.5 kDa)

Western blot analysis using ADRB2 mAb against HEK293 (1) and ADRB2 (AA: 302-413)-hIgGFc transfected HEK293 (2) cell lysate.



Flow cytometric analysis of Hela cells using ADRB2 mouse mAb (green) and negative control (red).

Please note: All products are 'FOR RESEARCH USE ONLY. NOT FOR USE IN DIAGNOSTIC OR THERAPEUTIC PROCEDURES'.