

Mouse Monoclonal Antibody to CIRBP

Purified Mouse Monoclonal Antibody

Catalog # AO2476a

Product Information

Application	WB, IHC, E
Primary Accession	Q14011
Reactivity	Human
Host	Mouse
Clonality	Monoclonal
Clone Names	6E12B3
Isotype	Mouse IgG1
Calculated MW	18648
Description	Cold-inducible mRNA binding protein that plays a protective role in the genotoxic stress response by stabilizing transcripts of genes involved in cell survival. Acts as a translational activator. Seems to play an essential role in cold-induced suppression of cell proliferation. Binds specifically to the 3-untranslated regions (3-UTRs) of stress-responsive transcripts RPA2 and TXN. Acts as a translational repressor (By similarity). Promotes assembly of stress granules (SGs), when overexpressed.;
Immunogen	Purified recombinant fragment of human CIRBP (AA: 1-90) expressed in E. Coli.
Formulation	Purified antibody in PBS with 0.05% sodium azide
Application Note	ELISA: 1/10000; WB: 1/500 - 1/2000; IHC: 1/200 - 1/1000;

Additional Information

Gene ID	1153
Other Names	CIRP
Dilution	WB~~1:1000 IHC~~1:100~500 E~~N/A
Storage	Maintain refrigerated at 2-8°C for up to 6 months. For long term storage store at -20°C in small aliquots to prevent freeze-thaw cycles.
Precautions	Mouse Monoclonal Antibody to CIRBP is for research use only and not for use in diagnostic or therapeutic procedures.

Protein Information

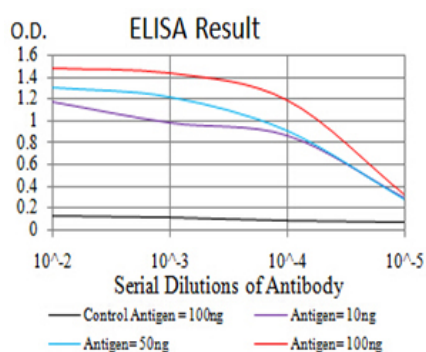
Name	CIRBP
-------------	-------

Synonyms	A18HNRNP, CIRP
Function	Cold-inducible mRNA binding protein that plays a protective role in the genotoxic stress response by stabilizing transcripts of genes involved in cell survival. Acts as a translational activator. Seems to play an essential role in cold-induced suppression of cell proliferation. Binds specifically to the 3'-untranslated regions (3'-UTRs) of stress-responsive transcripts RPA2 and TXN. Acts as a translational repressor (By similarity). Promotes assembly of stress granules (SGs), when overexpressed.
Cellular Location	Nucleus, nucleoplasm. Cytoplasm Note=Translocates from the nucleus to the cytoplasm after exposure to UV radiation. Translocates from the nucleus to the cytoplasm into stress granules upon various cytoplasmic stresses, such as osmotic and heat shocks. Its recruitment into stress granules occurs in the absence of TIAR proteins (By similarity).
Tissue Location	Ubiquitous.

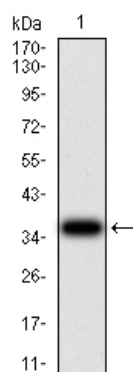
References

1.Med Sci Monit. 2015 May 2;21:1256-60. ; 2.Int J Gynecol Pathol. 2003 Jul;22(3):240-7.;

Images

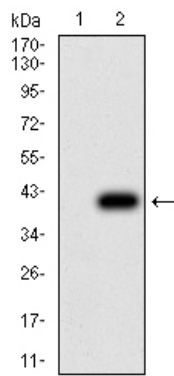


Black line: Control Antigen (100 ng);Purple line: Antigen (10ng); Blue line: Antigen (50 ng); Red line:Antigen (100 ng)

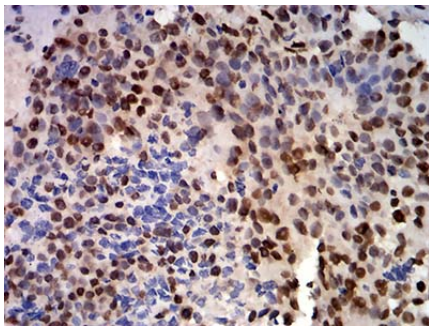
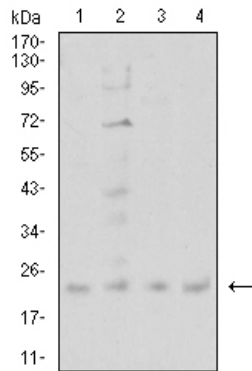


Western blot analysis using CIRBP mAb against human CIRBP (AA: 1-90) recombinant protein. (Expected MW is 35.9 kDa)

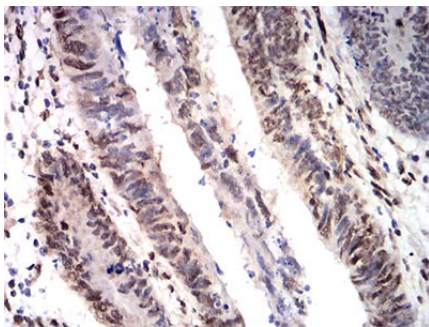
Western blot analysis using CIRBP mAb against HEK293 (1) and CIRBP (AA: 1-90)-hIgGfc transfected HEK293 (2) cell lysate.



Western blot analysis using CIRBP mouse mAb against SW480 (1), PC-3 (2), A431 (3), and U251 (4) cell lysate.



Immunohistochemical analysis of paraffin-embedded bladder cancer tissues using CIRBP mouse mAb with DAB staining.



Immunohistochemical analysis of paraffin-embedded rectum cancer tissues using CIRBP mouse mAb with DAB staining.

Please note: All products are 'FOR RESEARCH USE ONLY. NOT FOR USE IN DIAGNOSTIC OR THERAPEUTIC PROCEDURES'.