

# Mouse Monoclonal Antibody to TCF4

Purified Mouse Monoclonal Antibody

Catalog # AO2478a

## Product Information

---

<b>Application</b>	WB, FC, E
<b>Primary Accession</b>	<a href="#">P15884</a>
<b>Reactivity</b>	Human
<b>Host</b>	Mouse
<b>Clonality</b>	Monoclonal
<b>Clone Names</b>	7B1B3
<b>Isotype</b>	Mouse IgG2b
<b>Calculated MW</b>	71308
<b>Description</b>	This gene encodes transcription factor 4, a basic helix-loop-helix transcription factor. The encoded protein recognizes an Ephrussi-box ('E-box') binding site ('CANNTG') - a motif first identified in immunoglobulin enhancers. This gene is broadly expressed, and may play an important role in nervous system development. Defects in this gene are a cause of Pitt-Hopkins syndrome. In addition, an intronic CTG repeat normally numbering 10-37 repeat units can expand to >50 repeat units and cause Fuchs endothelial corneal dystrophy. Multiple alternatively spliced transcript variants that encode different proteins have been described. ;
<b>Immunogen</b>	Purified recombinant fragment of human TCF4 (AA: 518-667) expressed in E. Coli.
<b>Formulation</b>	Purified antibody in PBS with 0.05% sodium azide
<b>Application Note</b>	ELISA: 1/10000; WB: 1/500 - 1/2000; FCM: 1/200 - 1/400

## Additional Information

---

<b>Gene ID</b>	6925
<b>Other Names</b>	E2-2; ITF2; PTHS; SEF2; FECD3; ITF-2; SEF-2; TCF-4
<b>Dilution</b>	WB~~1:1000 FC~~1:10~50 E~~N/A
<b>Storage</b>	Maintain refrigerated at 2-8°C for up to 6 months. For long term storage store at -20°C in small aliquots to prevent freeze-thaw cycles.
<b>Precautions</b>	Mouse Monoclonal Antibody to TCF4 is for research use only and not for use in diagnostic or therapeutic procedures.

## Protein Information

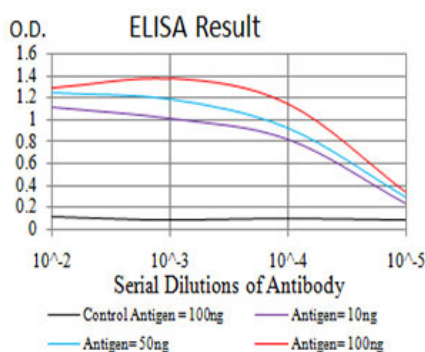
---

<b>Name</b>	TCF4
<b>Synonyms</b>	BHLHB19, ITF2, SEF2
<b>Function</b>	Transcription factor that binds to the immunoglobulin enhancer Mu-E5/KE5-motif. Involved in the initiation of neuronal differentiation. Activates transcription by binding to the E box (5'- CANNTG-3'). Binds to the E-box present in the somatostatin receptor 2 initiator element (SSTR2-INR) to activate transcription (By similarity). Preferentially binds to either 5'-ACANNTGT-3' or 5'- CCANNTGG-3'.
<b>Cellular Location</b>	Nucleus {ECO:0000255   PROSITE-ProRule:PRU00981, ECO:0000269   PubMed:22777675}
<b>Tissue Location</b>	Expressed in adult heart, brain, placenta, skeletal muscle and to a lesser extent in the lung. In developing embryonic tissues, expression mostly occurs in the brain

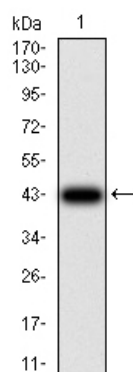
## References

1.J Psychiatr Res. 2015 Oct;69:95-101. ; 2.Haematologica. 2014 Dec;99(12):e257-9.;

## Images

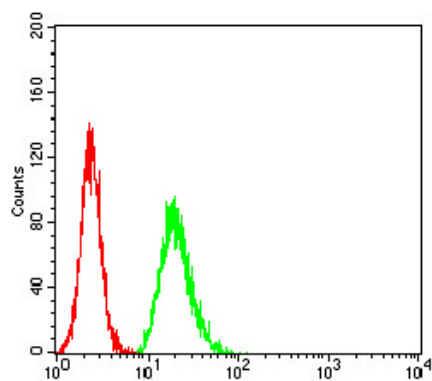
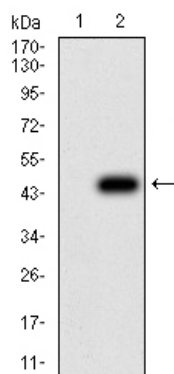


Black line: Control Antigen (100 ng);Purple line: Antigen (10ng); Blue line: Antigen (50 ng); Red line:Antigen (100 ng)



Western blot analysis using TCF4 mAb against human TCF4 (AA: 518-667) recombinant protein. (Expected MW is 43 kDa)

Western blot analysis using TCF4 mAb against HEK293 (1) and TCF4 (AA: 518-667)-hIgGfc transfected HEK293 (2) cell lysate.



Flow cytometric analysis of Hela cells using TCF4 mouse mAb (green) and negative control (red).

Please note: All products are 'FOR RESEARCH USE ONLY. NOT FOR USE IN DIAGNOSTIC OR THERAPEUTIC PROCEDURES'.