

Mouse Monoclonal Antibody to ADAMTS1

Purified Mouse Monoclonal Antibody

Catalog # AO2480a

Product Information

Application	WB, FC, E
Primary Accession	Q9UHI8
Reactivity	Human
Host	Mouse
Clonality	Monoclonal
Clone Names	1C12E6
Isotype	Mouse IgG1
Calculated MW	105358
Description	This gene encodes a member of the ADAMTS (a disintegrin and metalloproteinase with thrombospondin motif) protein family. Members of the family share several distinct protein modules, including a propeptide region, a metalloproteinase domain, a disintegrin-like domain, and a thrombospondin type 1 (TS) motif. Individual members of this family differ in the number of C-terminal TS motifs, and some have unique C-terminal domains. The protein encoded by this gene contains two disintegrin loops and three C-terminal TS motifs and has anti-angiogenic activity. The expression of this gene may be associated with various inflammatory processes as well as development of cancer cachexia. This gene is likely to be necessary for normal growth, fertility, and organ morphology and function.;
Immunogen	Purified recombinant fragment of human ADAMTS1 (AA: 858-960) expressed in E. Coli.
Formulation	Purified antibody in PBS with 0.05% sodium azide
Application Note	ELISA: 1/10000; WB: 1/500 - 1/2000; FCM: 1/200 - 1/400

Additional Information

Gene ID	9510
Other Names	C3-C5; METH1
Dilution	WB~~1:1000 FC~~1:10~50 E~~N/A
Storage	Maintain refrigerated at 2-8°C for up to 6 months. For long term storage store at -20°C in small aliquots to prevent freeze-thaw cycles.
Precautions	Mouse Monoclonal Antibody to ADAMTS1 is for research use only and not for use in diagnostic or therapeutic procedures.

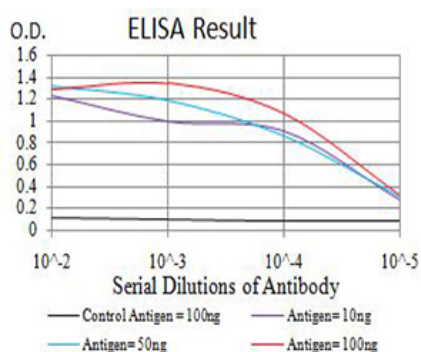
Protein Information

Name	ADAMTS1
Synonyms	KIAA1346, METH1
Function	Metalloprotease which cleaves aggrecan, a cartilage proteoglycan, at the '1938-Glu- -Leu-1939' site (within the chondroitin sulfate attachment domain), and may be involved in its turnover (By similarity). Also cleaves COMP (PubMed: 39672391). Has angiogenic inhibitor activity (PubMed: 10438512). May play a critical role in follicular rupture (By similarity).
Cellular Location	Secreted, extracellular space, extracellular matrix

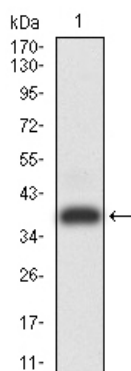
References

1.Mol Cancer. 2013 Jan 5;12:2. ; 2.Cancer Sci. 2012 Oct;103(10):1889-97.;

Images

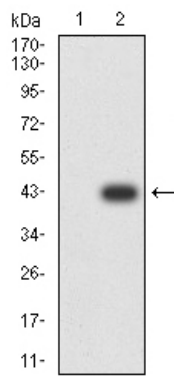


Black line: Control Antigen (100 ng);Purple line: Antigen (10ng); Blue line: Antigen (50 ng); Red line:Antigen (100 ng)

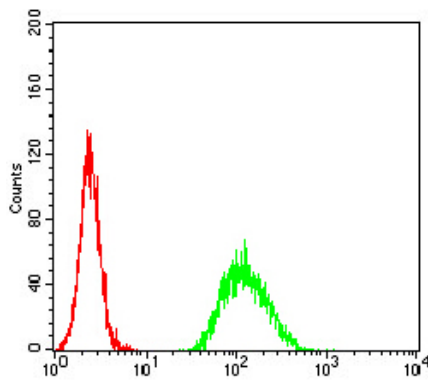
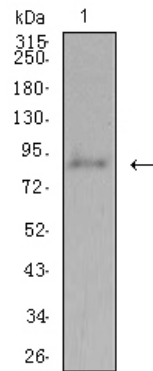


Western blot analysis using ADAMTS1 mAb against human ADAMTS1 (AA: 858-960) recombinant protein. (Expected MW is 38.3 kDa)

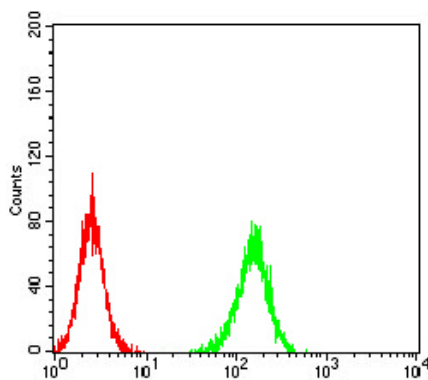
Western blot analysis using ADAMTS1 mAb against HEK293 (1) and ADAMTS1 (AA: 858-960)-hIgGFc transfected HEK293 (2) cell lysate.



Western blot analysis using ADAMTS1 mouse mAb against HeLa (1) cell lysate.



Flow cytometric analysis of HeLa cells using ADAMTS1 mouse mAb (green) and negative control (red).



Flow cytometric analysis of K562 cells using ADAMTS1 mouse mAb (green) and negative control (red).

Please note: All products are 'FOR RESEARCH USE ONLY. NOT FOR USE IN DIAGNOSTIC OR THERAPEUTIC PROCEDURES'.