

Mouse Monoclonal Antibody to CDC37

Purified Mouse Monoclonal Antibody

Catalog # AO2487a

Product Information

Application	WB, FC, E
Primary Accession	Q16543
Reactivity	Human, Mouse
Host	Mouse
Clonality	Monoclonal
Clone Names	6B3B7
Isotype	Mouse IgG2a
Calculated MW	44468
Description	The protein encoded by this gene is highly similar to Cdc 37, a cell division cycle control protein of <i>Saccharomyces cerevisiae</i> . This protein is a molecular chaperone with specific function in cell signal transduction. It has been shown to form complex with Hsp90 and a variety of protein kinases including CDK4, CDK6, SRC, RAF-1, MOK, as well as eIF2 alpha kinases. It is thought to play a critical role in directing Hsp90 to its target kinases.;
Immunogen	Purified recombinant fragment of human CDC37 (AA: 241-378) expressed in <i>E. Coli</i> .
Formulation	Purified antibody in PBS with 0.05% sodium azide
Application Note	ELISA: 1/10000; WB: 1/500 - 1/2000; FCM: 1/200 - 1/400

Additional Information

Gene ID	11140
Other Names	P50CDC37
Dilution	WB~~1:1000 FC~~1:10~50 E~~N/A
Storage	Maintain refrigerated at 2-8°C for up to 6 months. For long term storage store at -20°C in small aliquots to prevent freeze-thaw cycles.
Precautions	Mouse Monoclonal Antibody to CDC37 is for research use only and not for use in diagnostic or therapeutic procedures.

Protein Information

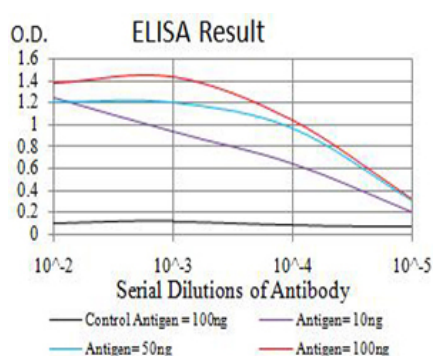
Name	CDC37
-------------	-------

Synonyms	CDC37A
Function	Co-chaperone that binds to numerous kinases and promotes their interaction with the Hsp90 complex, resulting in stabilization and promotion of their activity (PubMed: 8666233). Inhibits HSP90AA1 ATPase activity (PubMed: 23569206).
Cellular Location	Cytoplasm.

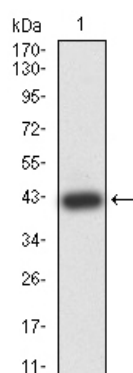
References

1.Liver Int. 2015 Apr;35(4):1403-15. ; 2.Oncogene. 2009 Jan 15;28(2):157-69. ;

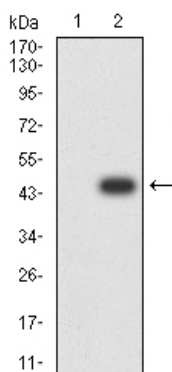
Images



Black line: Control Antigen (100 ng);Purple line: Antigen (10ng); Blue line: Antigen (50 ng); Red line:Antigen (100 ng)

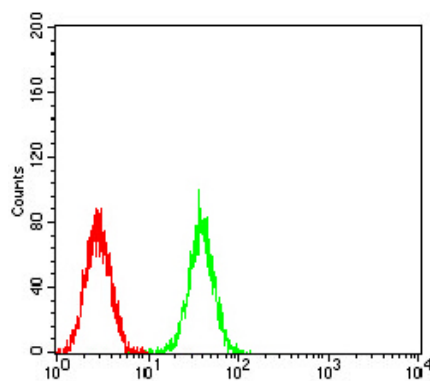
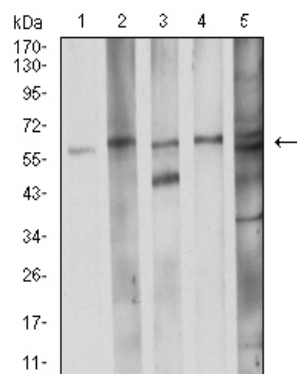


Western blot analysis using CDC37 mAb against human CDC37 (AA: 241-378) recombinant protein. (Expected MW is 41.6 kDa)



Western blot analysis using CDC37 mAb against HEK293 (1) and CDC37 (AA: 241-378)-hIgGFc transfected HEK293 (2) cell lysate.

Western blot analysis using CDC37 mouse mAb against K562 (1), LNCap (2), A431 (3), HEK293 (4), and C2C12 (5) cell lysate.



Flow cytometric analysis of K562 cells using CDC37 mouse mAb (green) and negative control (red).

Please note: All products are 'FOR RESEARCH USE ONLY. NOT FOR USE IN DIAGNOSTIC OR THERAPEUTIC PROCEDURES'.