

AFAP1L2

Purified Mouse Monoclonal Antibody
Catalog # AO2497a

Product Information

Application	WB, IHC, ICC, E
Primary Accession	Q8N4X5
Reactivity	Human
Host	Mouse
Clonality	Monoclonal
Clone Names	4E12D7
Isotype	Mouse IgG1
Calculated MW	91300
Immunogen	Purified recombinant fragment of human AFAP1L2 (AA: 674-818) expressed in E. Coli.
Formulation	Purified antibody in PBS with 0.05% sodium azide

Additional Information

Gene ID	84632
Other Names	XB130; KIAA1914; CTB-1144G6.4
Dilution	WB~~1/500 - 1/2000 IHC~~1:100~500 ICC~~N/A E~~ 1/10000
Storage	Maintain refrigerated at 2-8°C for up to 6 months. For long term storage store at -20°C in small aliquots to prevent freeze-thaw cycles.
Precautions	AFAP1L2 is for research use only and not for use in diagnostic or therapeutic procedures.

Protein Information

Name	AFAP1L2
Synonyms	KIAA1914, XB130
Function	May play a role in a signaling cascade by enhancing the kinase activity of SRC. Contributes to SRC-regulated transcription activation.
Cellular Location	Cytoplasm.
Tissue Location	Detected in spleen and thyroid, and at lower levels in kidney, brain, lung and pancreas.

References

1.Int J Clin Exp Pathol. 2015 May 1;8(5):5300-8.2.PLoS One. 2013;8(3):e59057.

Images

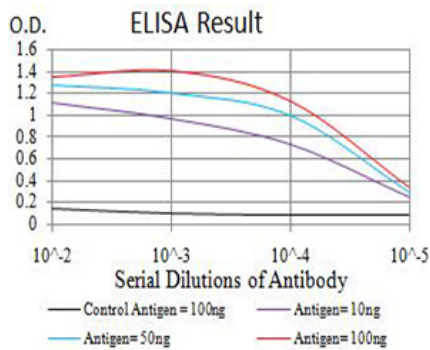


Figure 1:Black line: Control Antigen (100 ng);Purple line: Antigen (10ng); Blue line: Antigen (50 ng); Red line:Antigen (100 ng)

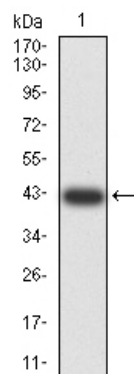


Figure 2:Western blot analysis using AFAP1L2 mAb against human AFAP1L2 (AA: 674-818) recombinant protein. (Expected MW is 42.1 kDa)

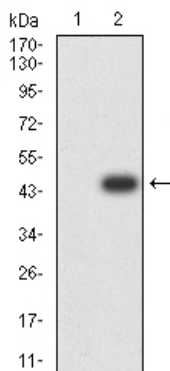


Figure 3:Western blot analysis using AFAP1L2 mAb against HEK293 (1) and AFAP1L2 (AA: 674-818)-hIgGfc transfected HEK293 (2) cell lysate.

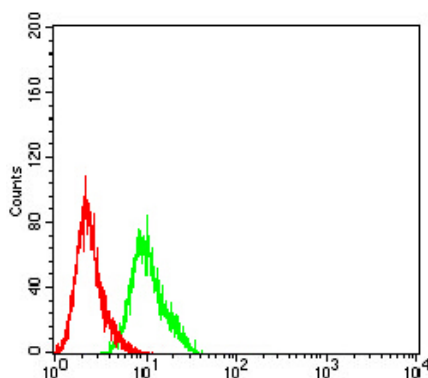


Figure 4:Flow cytometric analysis of HeLa cells using AFAP1L2 mouse mAb (green) and negative control (red).

Please note: All products are 'FOR RESEARCH USE ONLY. NOT FOR USE IN DIAGNOSTIC OR THERAPEUTIC PROCEDURES'.