

# ASH2L

Purified Mouse Monoclonal Antibody  
Catalog # AO2500a

## Product Information

---

<b>Application</b>	WB, IHC, ICC, E
<b>Primary Accession</b>	<a href="#">Q9UBL3</a>
<b>Reactivity</b>	Human
<b>Host</b>	Mouse
<b>Clonality</b>	Monoclonal
<b>Clone Names</b>	6B10H10
<b>Isotype</b>	Mouse IgG1
<b>Calculated MW</b>	68723
<b>Immunogen</b>	Purified recombinant fragment of human ASH2L (AA: 493-628) expressed in E. Coli.
<b>Formulation</b>	Purified antibody in PBS with 0.05% sodium azide

## Additional Information

---

<b>Gene ID</b>	9070
<b>Other Names</b>	ASH2; Bre2; ASH2L1; ASH2L2
<b>Dilution</b>	WB~~ 1/500 - 1/2000 IHC~~1/200 - 1/1000 ICC~~N/A E~~ 1/10000
<b>Storage</b>	Maintain refrigerated at 2-8°C for up to 6 months. For long term storage store at -20°C in small aliquots to prevent freeze-thaw cycles.
<b>Precautions</b>	ASH2L is for research use only and not for use in diagnostic or therapeutic procedures.

## Protein Information

---

<b>Name</b>	ASH2L ( <a href="#">HGNC:744</a> )
<b>Synonyms</b>	ASH2L1
<b>Function</b>	Transcriptional regulator (PubMed: <a href="#">12670868</a> ). Component or associated component of some histone methyltransferase complexes which regulates transcription through recruitment of those complexes to gene promoters (PubMed: <a href="#">19131338</a> ). Component of the Set1/Ash2 histone methyltransferase (HMT) complex, a complex that specifically methylates 'Lys-4' of histone H3, but not if the neighboring 'Lys-9' residue is already methylated (PubMed: <a href="#">19556245</a> ). As part of the MLL1/MLL complex it is involved in

methylation and dimethylation at 'Lys-4' of histone H3 (PubMed:[19556245](#)). May play a role in hematopoiesis (PubMed:[12670868](#)). In association with RBBP5 and WDR5, stimulates the histone methyltransferase activities of KMT2A, KMT2B, KMT2C, KMT2D, SETD1A and SETD1B (PubMed:[21220120](#), PubMed:[22266653](#)).

#### Cellular Location

Nucleus.

#### Tissue Location

Ubiquitously expressed. Predominantly expressed in adult heart and testis and fetal lung and liver, with barely detectable expression in adult lung, liver, kidney, prostate, and peripheral leukocytes.

## References

1.Mol Cell. 2013 Mar 28;49(6):1108-20. 2.Nat Struct Mol Biol. 2011 Jun 5;18(7):857-9.

## Images

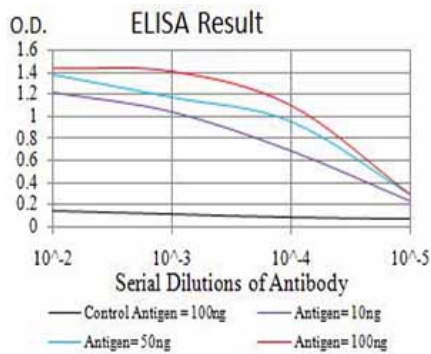


Figure 1:Black line: Control Antigen (100 ng);Purple line: Antigen (10ng); Blue line: Antigen (50 ng); Red line:Antigen (100 ng)

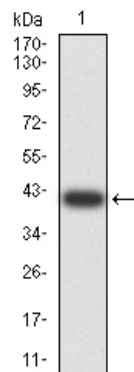


Figure 2:Western blot analysis using ASH2L mAb against human ASH2L (AA: 493-628) recombinant protein. (Expected MW is 41.6 kDa)

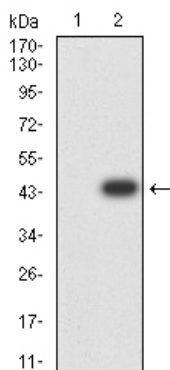


Figure 3:Western blot analysis using ASH2L mAb against HEK293 (1) and ASH2L (AA: 493-628)-hIgGfC transfected HEK293 (2) cell lysate.

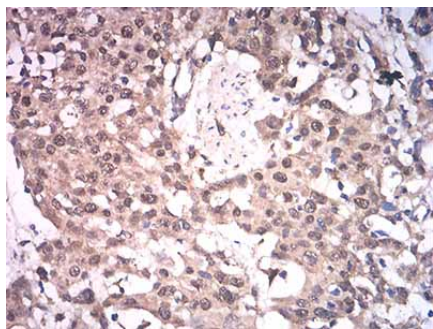


Figure 4:Immunohistochemical analysis of paraffin-embedded esophageal cancer tissues using ASH2L mouse mAb with DAB staining.

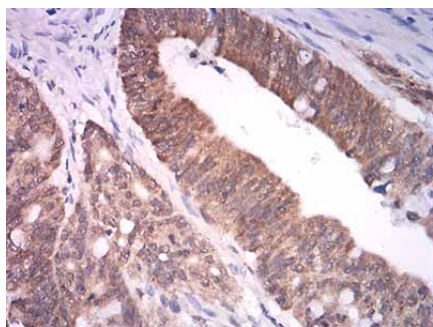


Figure 5:Immunohistochemical analysis of paraffin-embedded rectum cancer tissues using ASH2L mouse mAb with DAB staining.

Please note: All products are 'FOR RESEARCH USE ONLY. NOT FOR USE IN DIAGNOSTIC OR THERAPEUTIC PROCEDURES'.