

Phospho-4E-BP1 (Ser65)

Purified Mouse Monoclonal Antibody
Catalog # AO2503a

Product Information

Application	WB, IHC, ICC, E
Primary Accession	Q13541
Reactivity	Human
Host	Mouse
Clonality	Monoclonal
Clone Names	1E2E7
Isotype	Mouse IgG1
Calculated MW	12580
Immunogen	Synthesized peptide of human Phospho-4E-BP1 (Ser65).
Formulation	Purified antibody in PBS with 0.05% sodium azide

Additional Information

Gene ID	1978
Other Names	EIF4EBP1; BP-1; 4EBP1; 4E-BP1; PHAS-I
Dilution	WB~~1:1000 IHC~~1/200 - 1/1000 ICC~~ 1/100 - 1/500 E~~ 1/10000
Storage	Maintain refrigerated at 2-8°C for up to 6 months. For long term storage store at -20°C in small aliquots to prevent freeze-thaw cycles.
Precautions	Phospho-4E-BP1 (Ser65) is for research use only and not for use in diagnostic or therapeutic procedures.

Protein Information

Name	EIF4EBP1
Function	Repressor of translation initiation that regulates EIF4E activity by preventing its assembly into the eIF4F complex: hypophosphorylated form competes with EIF4G1/EIF4G3 and strongly binds to EIF4E, leading to repress translation. In contrast, hyperphosphorylated form dissociates from EIF4E, allowing interaction between EIF4G1/EIF4G3 and EIF4E, leading to initiation of translation. Mediates the regulation of protein translation by hormones, growth factors and other stimuli that signal through the MAP kinase and mTORC1 pathways.
Cellular Location	Cytoplasm. Nucleus. Note=Localization to the nucleus is unaffected by

References

1.Sci Signal. 2015 Nov 17;8(403):ra116.2.Oncotarget. 2015 Sep 15;6(27):24092-104.

Images

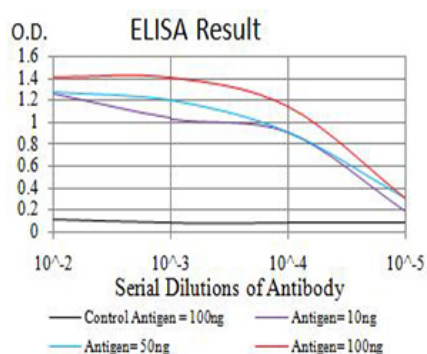


Figure 1:Black line: Control Antigen (100 ng);Purple line: Antigen (10ng); Blue line: Antigen (50 ng); Red line:Antigen (100 ng)

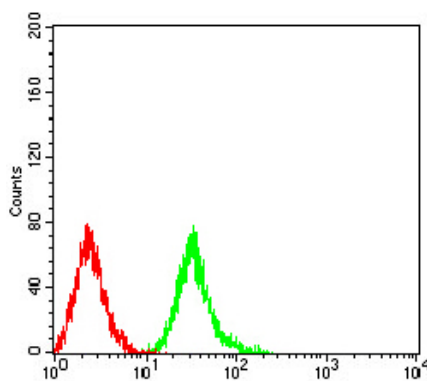


Figure 5:Flow cytometric analysis of Jurkat cells using Phospho-4E-BP1 (Ser65) mouse mAb (green) and negative control (red).

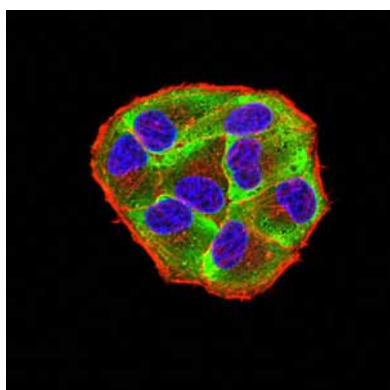


Figure 2:Immunofluorescence analysis of Hela cells using Phospho-4E-BP1 (Ser65) mouse mAb (green). Blue: DRAQ5 fluorescent DNA dye. Red: Actin filaments have been labeled with Alexa Fluor- 555 phalloidin. Secondary antibody from Fisher (Cat#: 35503)

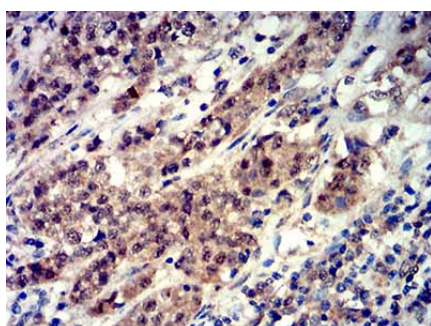


Figure 3:Immunohistochemical analysis of paraffin-embedded bladder cancer tissues using Phospho-4E-BP1 (Ser65) mouse mAb with DAB staining.

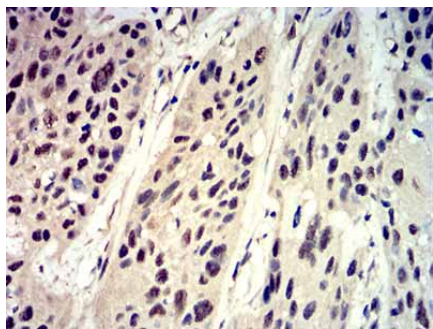


Figure 4:Immunohistochemical analysis of paraffin-embedded esophageal cancer tissues using Phospho-4E-BP1 (Ser65) mouse mAb with DAB staining.

Please note: All products are 'FOR RESEARCH USE ONLY. NOT FOR USE IN DIAGNOSTIC OR THERAPEUTIC PROCEDURES'.