

KDM4B

Purified Mouse Monoclonal Antibody
Catalog # AO2524a

Product Information

Application	WB, IHC, ICC, E
Primary Accession	O94953
Reactivity	Human, Mouse
Host	Mouse
Clonality	Monoclonal
Clone Names	3A6H6
Isotype	Mouse IgG1
Calculated MW	121897
Immunogen	Purified recombinant fragment of human KDM4B (AA: 960-1096) expressed in E. Coli.
Formulation	Purified antibody in PBS with 0.05% sodium azide

Additional Information

Gene ID	23030
Other Names	JMJD2B; TDRD14B
Dilution	WB~~ 1/500 - 1/2000 IHC~~1:100~500 ICC~~N/A E~~ 1/10000
Storage	Maintain refrigerated at 2-8°C for up to 6 months. For long term storage store at -20°C in small aliquots to prevent freeze-thaw cycles.
Precautions	KDM4B is for research use only and not for use in diagnostic or therapeutic procedures.

Protein Information

Name	KDM4B
Synonyms	JHDM3B, JMJD2B, KIAA0876
Function	Histone demethylase that specifically demethylates 'Lys-9' of histone H3, thereby playing a role in histone code. Does not demethylate histone H3 'Lys-4', H3 'Lys-27', H3 'Lys-36' nor H4 'Lys- 20'. Only able to demethylate trimethylated H3 'Lys-9', with a weaker activity than KDM4A, KDM4C and KDM4D. Demethylation of Lys residue generates formaldehyde and succinate (PubMed: 16603238 , PubMed: 28262558). Plays a critical role in the development of the central nervous system (CNS).

References

1.J Natl Cancer Inst. 2015 Apr 29;107(6):djv080.2.Int J Oncol. 2014 Apr;44(4):1341-8.

Images

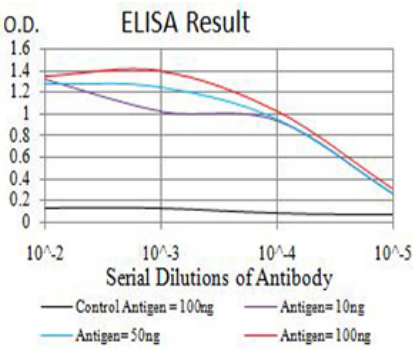


Figure 1:Black line: Control Antigen (100 ng);Purple line: Antigen (10ng); Blue line: Antigen (50 ng); Red line:Antigen (100 ng)

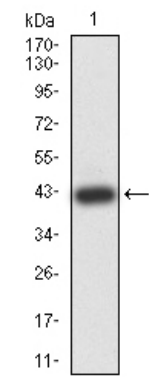


Figure 2:Western blot analysis using KDM4B mAb against human KDM4B (AA: 960-1096) recombinant protein. (Expected MW is 41 kDa)

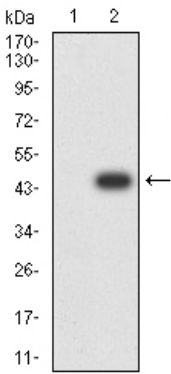
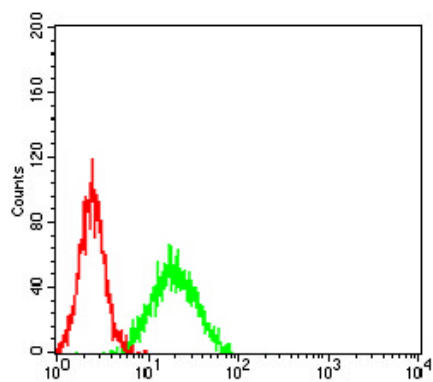


Figure 3:Western blot analysis using KDM4B mAb against HEK293 (1) and KDM4B (AA: 960-1096)-hIgGFc transfected HEK293 (2) cell lysate.

Figure 4:Flow cytometric analysis of NIH/3T3 cells using KDM4B mouse mAb (green) and negative control (red).



Please note: All products are 'FOR RESEARCH USE ONLY. NOT FOR USE IN DIAGNOSTIC OR THERAPEUTIC PROCEDURES'.