

BCL11B

Purified Mouse Monoclonal Antibody
Catalog # AO2547a

Product Information

Application	WB, IHC, ICC, E
Primary Accession	Q9C0K0
Reactivity	Human
Host	Mouse
Clonality	Monoclonal
Clone Names	1F8H9
Isotype	Mouse IgG1
Calculated MW	95519
Immunogen	Purified recombinant fragment of human BCL11B (AA: 1-150) expressed in E. Coli.
Formulation	Purified antibody in PBS with 0.05% sodium azide

Additional Information

Gene ID	64919
Other Names	ATL1; RIT1; CTIP2; IMD49; CTIP-2; ZNF856B; ATL1-beta; ATL1-alpha; ATL1-delta; ATL1-gamma; hRIT1-alpha
Dilution	WB~~ 1/500 - 1/2000 IHC~~1:100~500 ICC~~N/A E~~ 1/10000
Storage	Maintain refrigerated at 2-8°C for up to 6 months. For long term storage store at -20°C in small aliquots to prevent freeze-thaw cycles.
Precautions	BCL11B is for research use only and not for use in diagnostic or therapeutic procedures.

Protein Information

Name	BCL11B
Synonyms	CTIP2, RIT1
Function	Key regulator of both differentiation and survival of T- lymphocytes during thymocyte development in mammals. Essential in controlling the responsiveness of hematopoietic stem cells to chemotactic signals by modulating the expression of the receptors CCR7 and CCR9, which direct the movement of progenitor cells from the bone marrow to the thymus (PubMed: 27959755). Is a regulator of IL2 promoter and enhances IL2

expression in activated CD4(+) T-lymphocytes (PubMed:[16809611](#)). Tumor-suppressor that represses transcription through direct, TFCOUP2-independent binding to a GC-rich response element (By similarity). May also function in the P53-signaling pathway (By similarity).

Cellular Location

Nucleus.

Tissue Location

Highly expressed in brain and in malignant T-cell lines derived from patients with adult T-cell leukemia/lymphoma

References

1.J Immunol. 2014 Sep 1;193(5):2059-65. 2.PLoS One. 2013;8(1):e55147.

Images

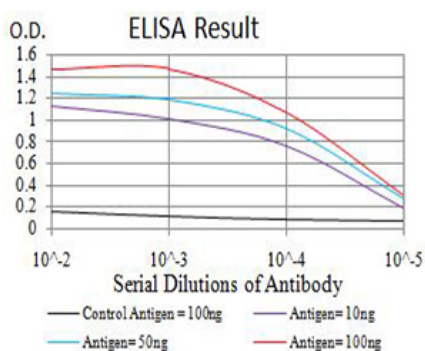


Figure 1:Black line: Control Antigen (100 ng);Purple line: Antigen (10ng); Blue line: Antigen (50 ng); Red line:Antigen (100 ng)

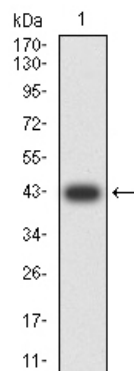


Figure 2:Western blot analysis using BCL11B mAb against human BCL11B (AA: 1-150) recombinant protein. (Expected MW is 42.3 kDa)

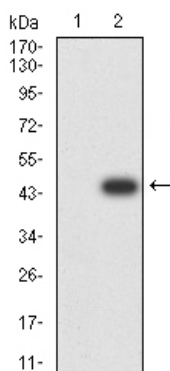
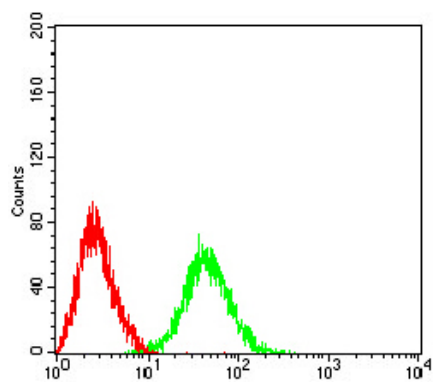


Figure 3:Western blot analysis using BCL11B mAb against HEK293 (1) and BCL11B (AA: 1-150)-hIgGFc transfected HEK293 (2) cell lysate.

Figure 4:Flow cytometric analysis of BCL11B cells using HeLa mouse mAb (green) and negative control (red).



Please note: All products are 'FOR RESEARCH USE ONLY. NOT FOR USE IN DIAGNOSTIC OR THERAPEUTIC PROCEDURES'.